

2002



# 발 간 사

세계는 지금 산업사회의 패러다임을 마감하면서 지식정보화 사회로 문명사적 대전환이 진행중입니다. 이러한 지식정보화 사회에서는 지식과 정보 및 기술이 경제의 핵심으로 작용하여 지식재산권이 국가와 기업의 경쟁력을 좌우하는 핵심요소로 부각되고 있습니다. 따라서 기술경쟁에서 승리하는 국가와 기업만이 21세기에 번영과 성장을 달성할 수 있습니다.

이미 시작된 WTO/TRIPs 체제하에서 우리나라의 국제경쟁력을 키우기 위해서는 보다 적극적인 지식재산권의 창출 및 보호가 절실한 실정입니다.

특허청은 지식재산권의 창출 및 보호를 위하여 심사기간의 대폭적인 감축, 중소기업 지식재산권 갖기 운동, 중소기업과 심사관의 자매결연 및 후견인제도 도입 등 실제적이고 제도적인 노력을 기울이는 한편, '99년 1월부터 산업재산권 전반의 전자출원시스템을 개통으로 안방출원시대를 열었고, '02년 7월에는 등록·심판관련 업무를 온라인화함으로써 명실상부한 특허행정의 전산화를 완성하게 되었으며, 특허관련 정보의 전자우편 송부, 특허고객센터 개통, 특허지도작성 프로그램 무상보급 및 대국민 산업재산권 정보 무료검색 지원 등 적극적인 대국민 특허행정 서비스에 나서고 있습니다.

이번에 발간되는 2002년 지식재산통계연보는 출원·심사·등록·심판 등 산업재산권에 관하여 국내는 물론 국제적인 통계를 모두 망라하여 수록하였습니다.

이 책자가 지식재산권 제도의 발전과 기술경쟁력 향상에 관심있는 분들에게 유용한 기초자료로 활용되어 산업계·학계·연구계의 발전과 더 나아가 국가경제 발전에 기여하는 밑거름이 되기를 기대합니다.

2002. 9.

특허청장 김 광 립

- 본 통계와 앞서 발행된 통계연보와의 통계수치 차이는 분류 조정, 오류수정 등으로 정정된 것임을 알려드립니다.
- '99년 1월 전자출원제도의 시행과 '99년 7월 실용신안 선등록제도가 시행되어 이를 반영하였습니다 .
- 출원의 경우 상표·의장은 '98년부터 다류·다의장 제도가 도입되어 하나의 출원서로 서로 다른 상품류 구분에 속한 상품(상표의 경우)·동일 대분류 물품(의장의 경우)들을 지정할 수 있게 되었습니다. 이에 대한 통계처리는 출원서 기준의 통계와 다류·다의장 기준에 의한 통계를 동시에 표기하는 것을 원칙으로 하였으며 紙面상 竝記가 어려운 경우 종전의 통계와 일관성을 유지하기 위해 다류 다의장 기준으로 표기하였습니다.
- '98년 3월 특허법원의 개원으로 종래 심판소(당사자계 1심)와 항고심판소(당사자계 재심, 사정계 1심)로 나누어지던 조직은 심판원 (당사자계·사정계 1심)으로 일원화되었습니다.
- 국제통계는 WIPO 웹사이트(<http://www.wipo.int/ipstats/en/>)의 통계자료를 참고하여 작성하였습니다.
- 본 자료에 대한 문의는 특허청 정보기획담당관실 (042-481-5082)로 하시기 바랍니다.

# 목 차

제1장 그림으로 보는 산업재산권 .....	1
제2장 산업재산권 주요지표 .....	7
I. 출원 통계 .....	9
1. 연도별 출원 건수 .....	9
2. 월별출원건수 .....	12
3. 월별·매체별 전자출원건수 .....	13
4. 권리별·산업부문별 출원건수 .....	14
5. 국제특허분류(IPC)별 특허·실용신안 출원건수 .....	20
6. 물품류별 의장출원 건수 .....	29
7. 상표류별 상표출원 건수 .....	35
가. 한국 분류 .....	35
나. 니스(NICE) 분류 .....	40
8. 출원인별(개인, 법인)출원건수 .....	45
9. 대리인 유무별 출원건수 .....	46
10. 내·외국인별 출원건수 .....	47
11. 외국인별 출원건수 .....	49
12. 시·도별 출원건수 .....	51
13. 우선권 증명서 발행 건수 .....	53
14. PCT 국제출원현황 .....	57
II. 심사 통계 .....	59
1. 연도별 심사처리건수 .....	59
2. 심사처리 및 미처리 건수 현황 .....	61
3. 심사처리내역 .....	62
가. 심사종결처리기준 .....	62
나. 1차심사처리기준(특허, 실용신안) .....	63
다. 1차심사처리기준(의장, 상표) .....	63

4. 권리별 심사청구현황 .....	64
5. 권리별 공고결정 및 이의신청건수 .....	68
6. 권리별 출원공고율 .....	69
<b>III. 등록 통계 .....</b>	<b>70</b>
1. 연도별 등록건수 .....	70
2. 산업부문별 특허 및 실용신안 등록건수 .....	72
3. 국제특허분류(IPC)별 특허·실용신안 등록건수 .....	75
4. 물품부문별 의장등록건수 .....	84
5. 물품류별 의장등록 건수 .....	85
6. 상품부문별 상표등록건수 .....	90
7. 상품류 및 서비스업류별 등록건수 .....	92
8. 상표·서비스표·업무표장·단체표장 등록건수 .....	100
9. 외국상표통상사용권 설정등록건수 .....	101
10. 내·외국인별 등록건수 .....	102
11. 시·도별 등록건수 .....	104
12. 외국인별·권리별 등록건수 .....	108
13. 외국인별 등록누계 .....	110
<b>IV. 심판 통계 .....</b>	<b>111</b>
1. 연도별·권리별 청구 및 처리건수 .....	111
가. 심 판 원 .....	111
나. 심 판 소 .....	112
다. 항고심판 .....	114
라. 특허법원 .....	116
마. 상 고 .....	117
2. 종류별·권리별 청구 및 처리건수 .....	119
가. 심 판 원 .....	119
나. 심 판 소 .....	122
다. 항고심판 .....	125
라. 특허법원 .....	128
마. 상 고 .....	129

V. 국제 통계 .....	130
1. 전세계의 산업재산권의 추이 .....	130
가. 출원의 추이 .....	130
나. 등록의 추이 .....	130
2. 세계 주요국의 산업재산권 추이 .....	131
가. 출원의 추이 .....	131
나. 등록의 추이 .....	131
다. 전세계 특허 및 실용신안 출원의 국가별 점유율 .....	132
3. 한국인의 대외국별 출원·등록건수 .....	133
4. 각국의 거주인·비거주인별 출원, 등록현황 .....	143
가. 특허 .....	143
나. 실용신안 .....	148
다. 식물변종특허 .....	150
라. 의 장 .....	151
마. 상표와 서비스표 .....	156
5. 출원인 국적별 대외국출원 현황 .....	160
6. 등록권자 국적별 외국출원 등록현황 .....	162
7. 국별 PCT 출원건수 .....	164

**참 고 자 료** .....169

1. 산업재산권 법령 체계도 .....	171
2. 특허청에서 열람할 수 있는 주요국 특허자료목록 .....	172
3. 지방특허정보지원센터 등록현황 .....	173
4. 출원 등록 심판 및 항고심판 청구와 특허청 정원 추이표 .....	174
5. 변리사 현황 .....	176
6. 각국의 특허출원료·등록료등 일람표 .....	178
7. WIPO 표준 국명코드 .....	180
8. WIPO 관장 산업재산권 협약 가입국 현황 .....	183
9. 기구도 .....	200

# CONTENTS

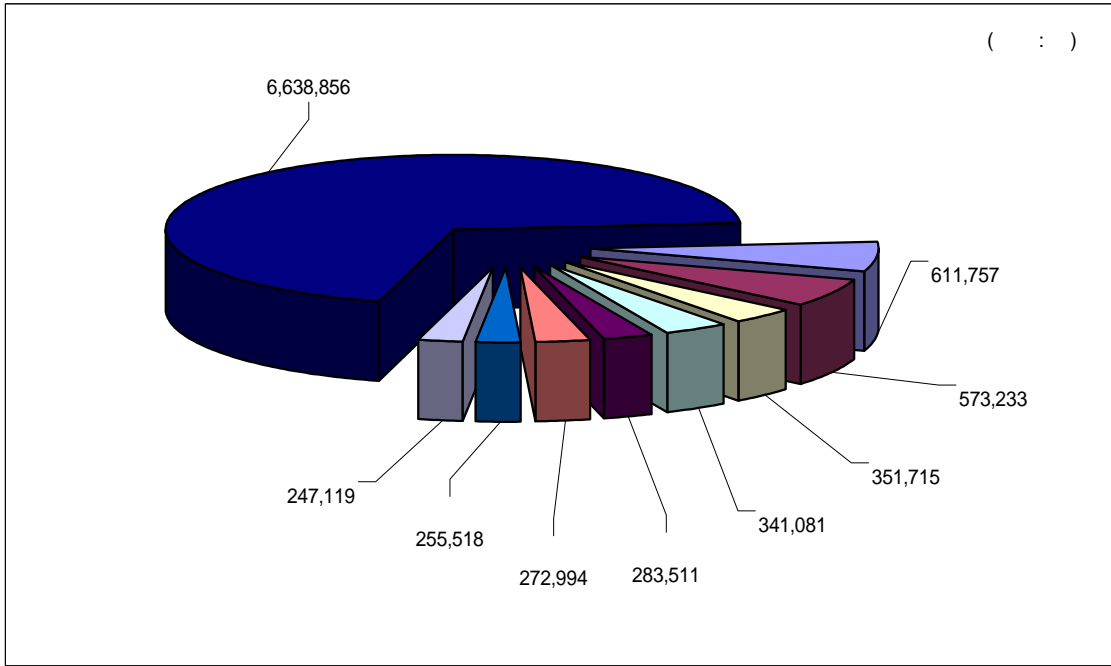
<b>Chapter 1. Charts of Industrial Property Statistics Trend .....</b>	<b>1</b>
<b>Chapter 2. Major Indices .....</b>	<b>7</b>
<b>I . Applications .....</b>	<b>9</b>
1. Number of Applications by years .....	9
2. Applications by Months .....	12
3. Types of Applications by Months .....	13
4. Applications by Industries .....	14
5. Patent and Utility Model Applications by IPC .....	20
6. Design Applications by Articles .....	29
7. Trademark Applications by Goods and Services .....	35
8. Applications by Types of Applicants .....	45
9. Applications by Patent Attorneys or Applicant Himself .....	46
10. Applications by Koreans and Foreign Nationals .....	47
11. Applications by Foreign Nationals .....	49
12. Applications by Cities and Provinces .....	51
13. Issuance of Priority Certificate .....	53
14. Status of International Applications under the PCT .....	57
<b>II. Examinations .....</b>	<b>59</b>
1. Number of examination Disposals by Years .....	59
2. Status of Examined and Unexamined Applicatons .....	61
3. Details of Examined Applications .....	62
4. Status of Request for Examination .....	64
5. Publication Decisions and Oppositions .....	68
6. Rate of Publication Decisions .....	69

III. Registrations .....	70
1. Number of Registrations by Years .....	70
2. Patents and Utility Models Registrations by Industries .....	72
3. Patents and Utility Models Registrations by IPC .....	75
4. Design Registrations by Articles .....	84
5. Design Registrations by kind of Articles .....	85
6. Trademark Registrations by Industries .....	90
7. Trademark & Servicemarks Registrations by kind of Goods and Services .....	92
8. Registrations by Type of Marks .....	100
9. Non-exclusive Licenses of Foreign Trademarks .....	101
10. Registrations by Koreans and Foreign Nationals .....	102
11. Registrations by Cities or Provinces .....	104
12. Registrations by Foreign Nationals .....	108
13. Accumulated Number of Registrations by Foreign Nationals ...	110
IV. Trials and Appeals .....	111
1. Number of Requests and Disposals by Years .....	111
2. Requests and Disposals by Type of Litigation .....	119
V. International Statistics .....	130
1. IPR Trend of the World .....	130
2. IPR Trend of the Prominent Countries .....	131
3. Industrial Property Rights Applied for by and Granted to Korean Nationals .....	133
4. Status of Applications and Registrations of each Country .....	143
5. Status of Foreign Applications by Nationality of Applicants .....	160
6. Status of Foreign Registrations by Nationality of Registrants ..	162
7. Number of PCT International Applications filed by Member Countries .....	164

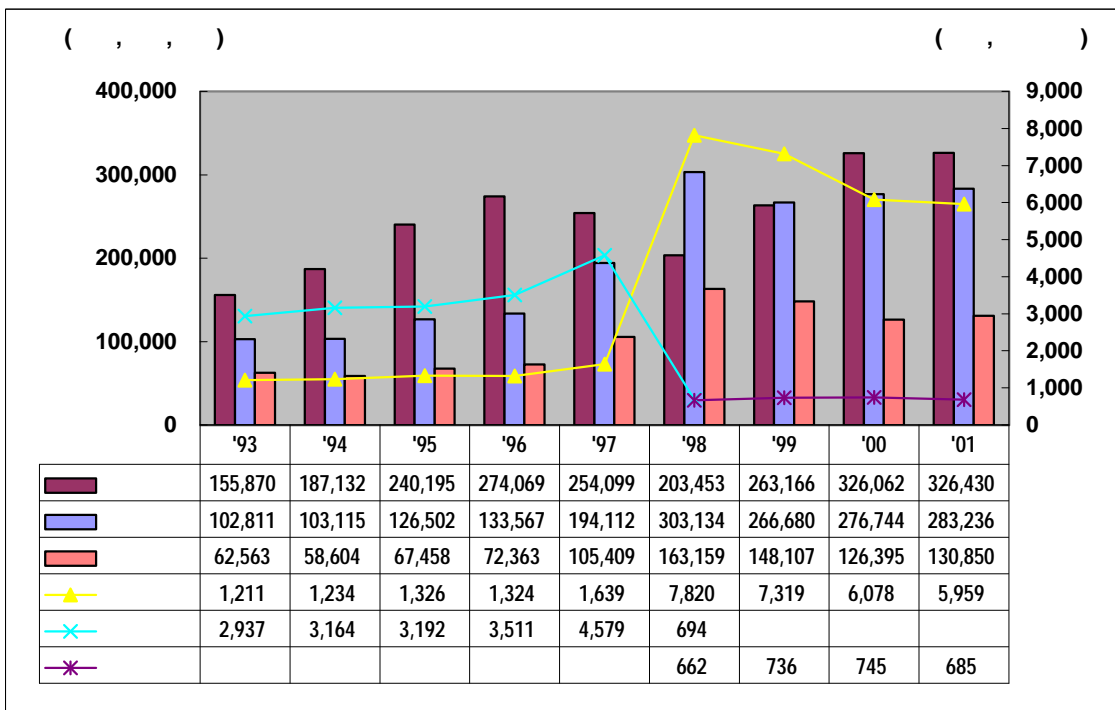


<b>Appendices</b> .....	169
1. Chart of the Industrial Property Laws .....	171
2. Available Foreign Documents at the KIPO .....	172
3. Local Patent Information Service Center .....	173
4. Number of Personnel .....	174
5. Patent Attorneys .....	176
6. Fee Schedule of each Country .....	178
7. TWO-Letter Code of Countries, Organizations and the Like(WIPO) .....	180
8. Status Party to the Industrial Property Treaties Administered by WIPO and Recognition .....	183
9. Organization Chart .....	200

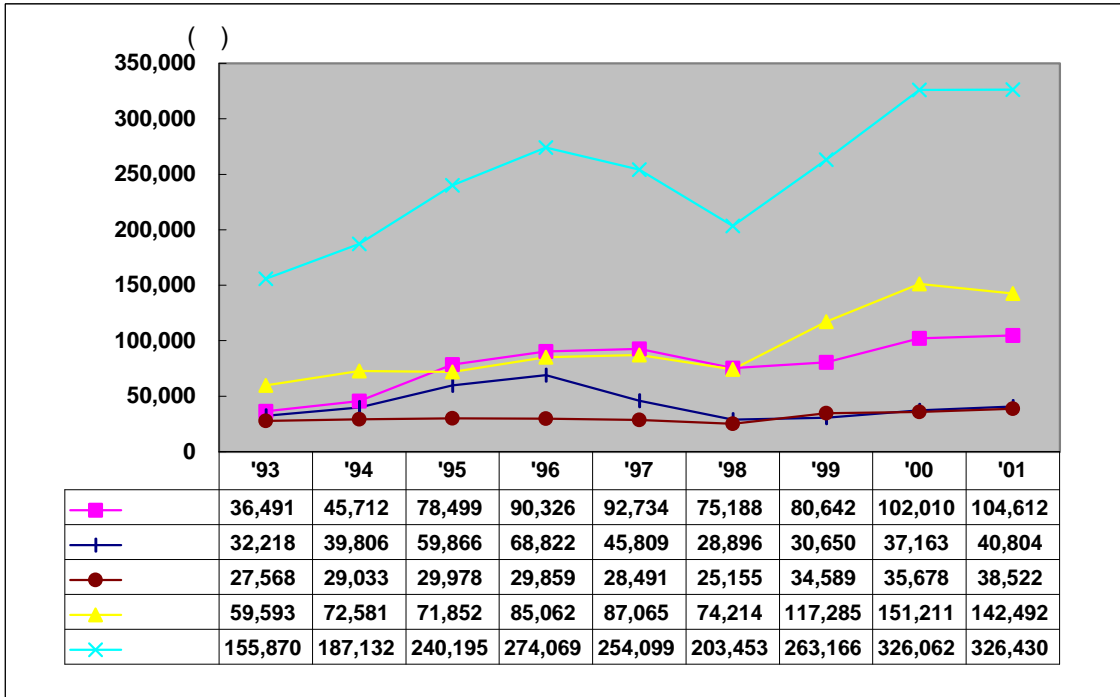
1



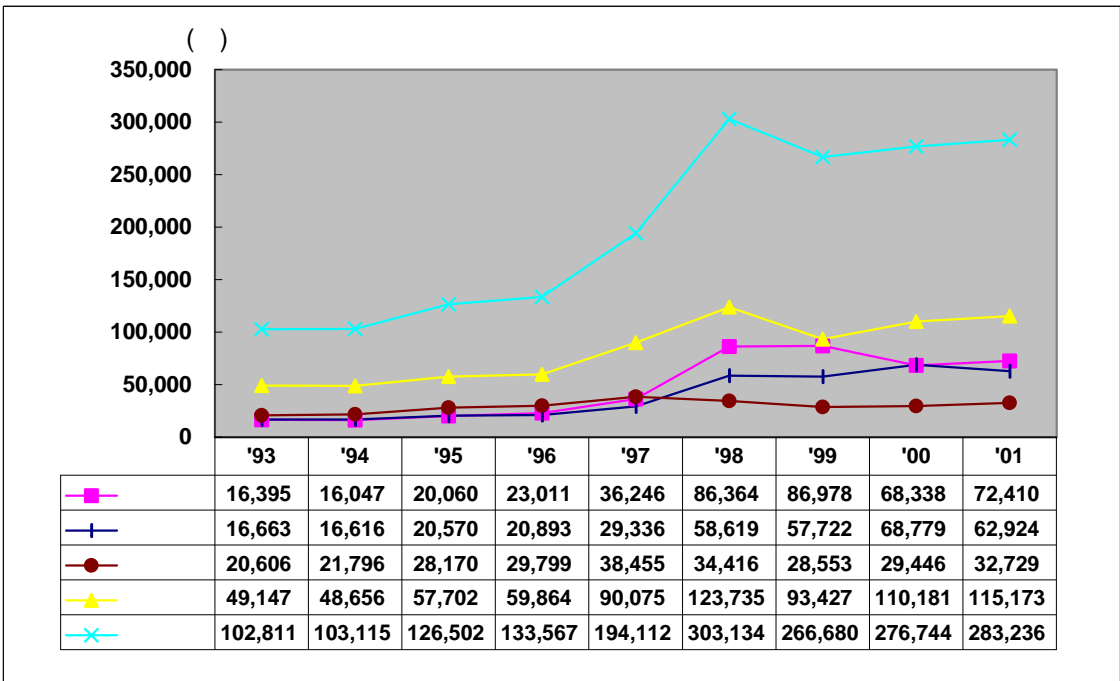
[ 1] '99  
: WIPO



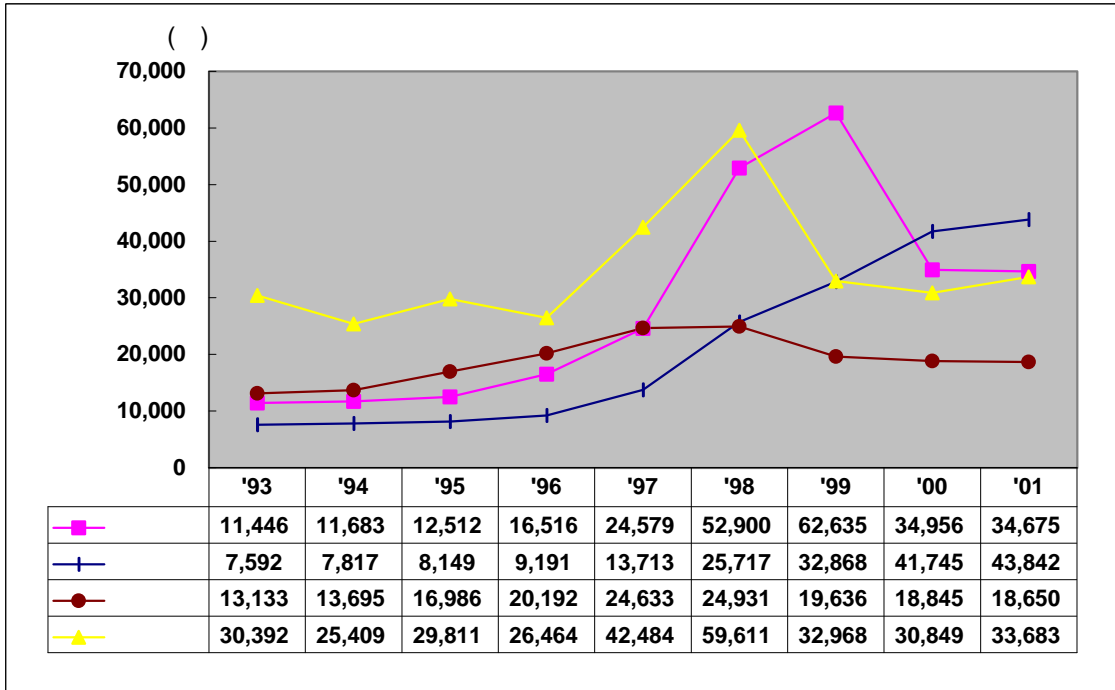
[ 2]  
( '98 . . . )



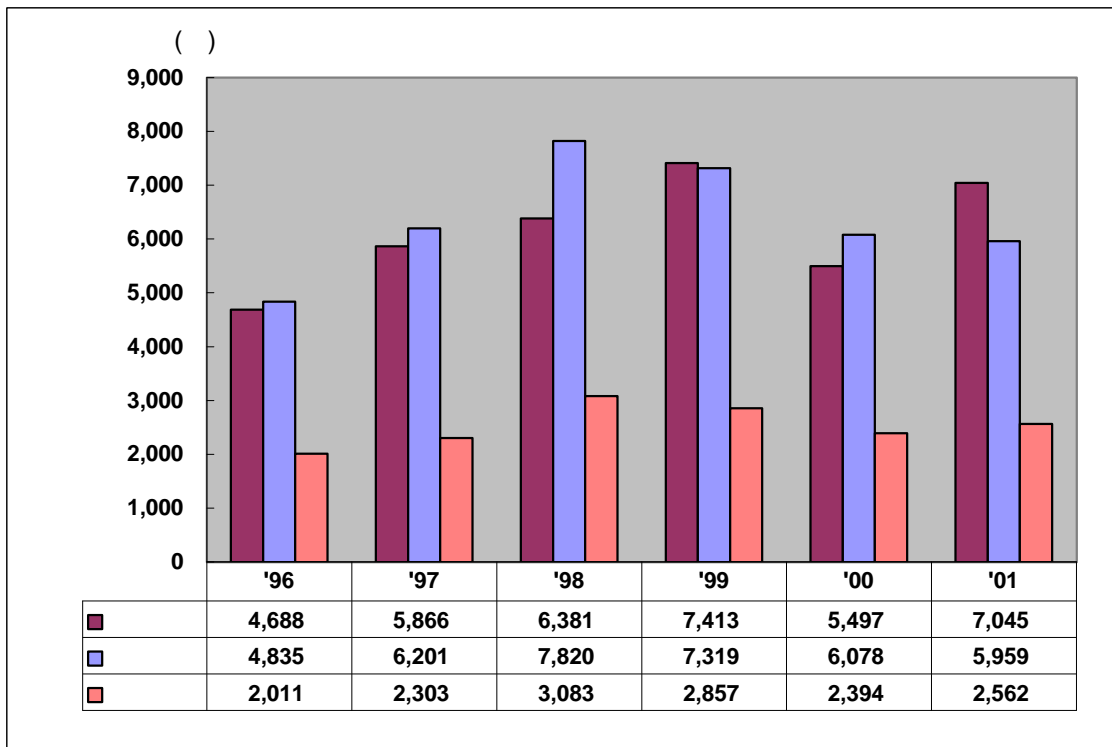
[ 3] ('98 . . . . . )



[ 4] ('98 . . . . . '99 . . . . . '00 . . . . . 1 . . . . . )



[ 5]



[ 6]

2

## (Applications)

### 1. (Number of Applications by years)

( : )

Classification	Patents	Utility Models	sub - Total	Industrial Designs	Trade - marks	Total
1947	236	237	473	23	-	496
1948	169	166	335	38	-	373
1949	233	229	462	46	-	508
1950	126	123	249	30	599	878
1951	30	29	59	3	40	102
1952	91	69	160	19	151	330
1953	76	152	228	62	229	519
1954	132	175	307	76	375	758
1955	156	281	437	216	465	1,118
1956	287	494	781	179	1,087	2,047
1957	469	758	1,227	276	1,469	2,972
1958	555	1,105	1,660	358	1,439	3,457
1959	703	1,395	2,098	362	1,307	3,767
1960	611	1,207	1,818	329	1,209	3,356
1961	858	1,683	2,541	470	1,665	4,676
1962	782	1,793	2,575	570	1,890	5,035
1963	771	1,790	2,561	729	1,295	4,585
1964	908	2,244	3,152	804	1,845	5,801
1965	1,018	2,849	3,867	825	2,053	6,745
1966	1,060	3,252	4,312	1,338	2,752	8,402
1967	1,177	3,594	4,771	1,919	3,228	9,918
1968	1,463	5,129	6,592	3,277	6,619	16,488
1969	1,701	5,573	7,274	4,536	9,111	20,921
1970	1,846	6,167	8,013	4,522	5,124	17,659
1971	1,906	6,810	8,716	5,348	5,816	19,880
1972	1,995	7,747	9,742	5,991	6,878	22,611

( : )

Classification	Patents	Utility Models	sub - Total	Industrial Designs	Trade - marks	Total
1973	2,398	7,561	9,959	6,333	9,562	25,854
1974	4,455	6,833	11,288	6,220	9,053	26,561
1975	2,914	7,290	10,204	6,707	9,476	26,387
1976	3,261	8,378	11,639	6,018	11,037	28,694
1977	3,139	7,601	10,740	5,520	9,415	25,675
1978	4,015	6,645	10,660	6,265	12,040	28,965
1979	4,722	7,957	12,679	8,371	13,789	34,839
1980	5,070	8,558	13,628	10,075	13,558	37,261
1981	5,303	9,064	14,367	10,394	15,755	40,516
1982	5,924	10,669	16,593	11,902	19,537	48,032
1983	6,394	11,485	17,879	13,947	23,982	55,808
1984	8,633	14,765	23,398	15,870	24,764	64,032
1985	10,587	18,548	29,135	18,949	26,069	74,153
1986	12,759	22,401	35,160	18,731	28,031	81,922
1987	17,062	24,773	41,835	20,231	30,762	92,828
1988	20,051	22,677	42,728	18,162	34,681	95,571
1989	23,315	21,530	44,845	18,196	39,832	102,873
1990	25,820	22,654	48,474	18,769	46,826	114,069
1991	28,132	25,895	54,027	20,097	46,612	120,736
1992	31,073	28,665	59,738	22,948	45,124	127,810
1993	36,491	32,218	68,709	27,568	59,593	155,870
1994	45,712	39,806	85,518	29,033	72,581	187,132
1995	78,499	59,866	138,365	29,978	71,852	240,195
1996	90,326	68,822	159,148	29,859	85,062	274,069
1997	92,734	45,809	138,543	28,491	87,065	254,099
1998	75,188	28,896	104,084	23,732	57,393	185,209
				(25,155)	(74,214)	(203,453)
1999	80,642	30,650	111,292	32,404	87,332	231,028
				(34,589)	(117,285)	(263,166)



( : )

Classification	Patents	Utility Models	sub - Total	Industrial Designs	Trade - marks	Total
2000	102,010	37,163	139,173	33,841	110,073	283,087
				(35,678)	(151,211)	(326,062)
2001	104,612	40,804	145,416	36,867	107,137	289,420
				(38,522)	(142,492)	(326,430)
Total	950,600	733,034	1,683,634	567,824	1,264,639	3,516,097
				(574,924)	(1,387,906)	(3,646,464)

: ( )

## 2. (Applications by Months)

( : )

Classification	Patents		Utility Models		Industrial Designs		Trademarks		Total	
	'00	'01	'00	'01	'00	'01	'00	'01	'00	'01
1	8	6,008	2,699	2,302	2,449	2,105	8,679	6,822	13,835	17,237
					(2,648)	(2,207)	(11,859)	(9,404)	(17,214)	(19,921)
2	6,608	7,287	3,035	3,176	2,724	2,744	9,013	7,450	21,380	20,657
					(2,868)	(2,884)	(11,986)	(10,186)	(24,497)	(23,533)
3	8,124	8,015	3,544	3,593	3,194	3,470	12,654	9,553	27,516	24,631
					(3,400)	(3,728)	(17,109)	(13,020)	(32,177)	(28,356)
4	7,246	7,628	3,024	3,495	2,843	3,133	9,303	8,392	22,416	22,648
					(3,006)	(3,333)	(12,712)	(10,888)	(25,988)	(25,344)
5	7,833	8,303	3,159	3,630	3,034	3,276	10,157	8,755	24,183	23,964
					(3,135)	(3,395)	(13,831)	(11,238)	(27,958)	(26,566)
6	9,065	9,994	3,297	3,528	2,822	3,291	10,209	8,953	25,393	25,766
					(3,022)	(3,408)	(14,545)	(12,314)	(29,929)	(29,244)
7	7,907	8,379	2,988	3,461	3,073	3,143	9,226	9,365	23,194	24,348
					(3,173)	(3,322)	(12,780)	(12,220)	(26,848)	(27,382)
8	8,208	8,630	2,939	3,353	2,520	3,273	8,522	9,487	22,189	24,743
					(2,702)	(3,369)	(11,996)	(12,393)	(25,845)	(27,745)
9	7,623	8,818	2,610	3,445	2,357	3,096	7,519	9,408	20,109	24,767
					(2,475)	(3,284)	(10,387)	(12,400)	(23,095)	(27,947)
10	7,867	7,869	3,009	3,205	2,681	2,816	8,374	8,747	21,931	22,637
					(2,902)	(2,858)	(11,608)	(11,717)	(25,386)	(25,649)
11	9,045	9,059	3,145	3,675	2,832	3,172	8,401	10,194	23,423	26,100
					(2,902)	(3,284)	(11,439)	(13,606)	(26,531)	(29,624)
12	16,604	14,622	3,714	3,941	3,312	3,348	8,016	10,011	31,646	31,922
					(3,445)	(3,450)	(10,959)	(13,106)	(34,722)	(35,119)
Total	96,138	104,612	37,163	40,804	33,841	36,867	110,073	107,137	277,215	289,420
					(35,678)	(38,522)	(151,211)	(142,492)	(320,190)	(326,430)
Average	8,011	8,718	3,097	3,400	2,820	3,072	9,173	8,928	23,101	24,118
					(2,973)	(3,210)	(12,601)	(11,874)	(26,682)	(27,203)

: ( )

3.  
(Types of Applications by Months)

( : )

Classi - fication	Patents			Utility Models			Industrial Designs			Trademarks			Total
	FD	(On -line)	(pap -er)	FD	(On -line)	(pap -er)	FD	(On -line)	(pap -er)	FD	(On -line)	(pap -er)	
'01.1	14	5,508	486	1	1,624	677	-	1,515	590	21	5,065	1,736	17,237
2	11	6,622	654	-	2,302	873	-	2,088	656	1	5,408	2,041	20,656
3	10	7,296	709	3	2,650	940	2	2,601	867	3	7,089	2,461	24,631
4	20	6,995	613	2	2,695	798	-	2,387	746	3	6,001	2,388	22,648
5	18	7,598	688	4	2,850	776	2	2,550	724	2	6,181	2,572	23,965
6	21	9,358	615	4	2,659	865	4	2,487	800	2	6,605	2,346	25,766
7	3	7,805	571	-	2,593	868	-	2,281	862	1	7,005	2,359	24,348
8	6	7,981	643	4	2,482	867	1	2,403	869	-	7,108	2,379	24,743
9	-	8,170	648	2	2,620	823	4	2,345	747	-	7,197	2,211	24,767
10	4	7,363	502	-	2,472	733	-	2,074	742	-	6,543	2,204	22,637
11	11	8,469	579	-	2,878	796	-	2,439	733	-	7,878	2,316	26,099
12	3	14,015	603	1	3,111	831	-	2,682	666	1	7,571	2,439	31,923
	121	97,180	7,311	21	30,936	9,847	13	27,852	9,002	34	79,651	27,452	289,420

4. (Applications by Industries)

가. (Patents)

( : )

Classification	'94	'95	'96	'97	'98	'99	'00	'01
Machinery	8,175 (17.9)	22,007 (28.0)	26,146 (28.9)	20,606 (22.2)	11,254 (15.0)	13,532 (16.8)	16,464 (16.1)	16,541 (15.8)
Chemicals	7,233 (15.8)	7,787 (10.0)	8,489 (9.4)	9,395 (10.1)	9,112 (12.1)	9,934 (12.3)	10,745 (10.5)	11,438 (10.9)
Fibers	1,417 (3.1)	1,521 (2.0)	1,409 (1.6)	1,864 (2.0)	1,637 (2.2)	1,363 (1.7)	1,517 (1.5)	1,778 (1.7)
Electris & Tele - communication	21,741 (47.6)	38,343 (48.8)	44,057 (48.8)	48,989 (52.8)	41,420 (55.1)	41,390 (51.3)	55,010 (53.9)	53,634 (51.3)
Civil Engineering & Construction	838 (1.8)	1,441 (1.8)	1,651 (1.8)	1,577 (1.7)	1,507 (2.0)	2,628 (3.3)	3,348 (3.3)	3679 (3.5)
Mining & Metal	1,506 (3.3)	1,887 (2.4)	2,218 (2.5)	2,630 (2.8)	2,442 (3.2)	2,827 (3.5)	3,589 (3.5)	4,150 (4.0)
Beverage, Medical & Hygiene	3,254 (7.1)	3,435 (4.4)	3,842 (4.3)	4,595 (5.0)	4,875 (6.5)	5,446 (6.8)	7,038 (6.8)	7,755 (7.4)
Office Supplies & printing	306 (0.7)	430 (0.5)	691 (0.8)	926 (1.0)	955 (1.3)	711 (0.9)	576 (0.6)	657 (0.6)
Agriculture, Forestry & Marine	335 (0.7)	355 (0.4)	473 (0.5)	534 (0.6)	590 (0.8)	907 (1.1)	982 (1.0)	1045 (1.0)
Miscellaneous Goods	907 (2.0)	1,293 (1.7)	1,350 (1.4)	1,618 (1.8)	1,396 (1.8)	1,904 (2.4)	2,474 (2.4)	2,751 (2.6)
Etc							267 (0.3)	1184 (1.2)
Total	45,712 (100)	78,499 (100)	90,326 (100)	92,734 (100)	75,188 (100)	80,642 (100)	102,010 (100)	104,612 (100)

: ( )

## (Utility Models)

( : )

Classification	'94	'95	'96	'97	'98	'99	'00	'01
Machinery	15,775 (39.6)	32,314 (54.0)	38,487 (55.9)	19,452 (42.5)	9,218 (31.9)	8,638 (28.2)	9,503 (25.6)	9,750 (23.9)
Chemicals	1,014 (2.5)	896 (1.5)	1,090 (1.6)	1,125 (2.5)	780 (2.7)	1,067 (3.5)	1,430 (3.8)	1,531 (3.7)
Fibers	1,574 (4.0)	1,651 (2.8)	1,711 (2.5)	1,511 (3.3)	1,002 (3.5)	963 (3.1)	1,183 (3.2)	1,233 (3.0)
Electris & Tele - communication	11,273 (28.3)	15,258 (25.5)	16,350 (23.8)	13,831 (30.2)	8,388 (29.0)	6,427 (21.0)	8,047 (21.7)	8,381 (20.5)
Civil Engineering & Construction	2,401 (6.0)	2,603 (4.3)	3,115 (4.5)	2,351 (5.1)	2,162 (7.5)	3,443 (11.2)	5,111 (13.8)	6,239 (15.3)
Mining & Metal	832 (2.1)	1,020 (1.7)	1,323 (1.9)	1,062 (2.3)	832 (2.9)	799 (2.6)	727 (2.0)	613 (1.5)
Beverage, Medical & Hygiene	1,349 (3.4)	1,107 (1.8)	1,185 (1.7)	1,037 (2.3)	1,135 (3.9)	1,600 (5.2)	2,094 (5.6)	2,310 (5.7)
Office Supplies & printing	625 (1.6)	616 (1.0)	782 (1.1)	789 (1.7)	681 (2.4)	759 (2.5)	830 (2.2)	905 (2.2)
Agriculture, Forestry & Marine	1,175 (3.0)	973 (1.6)	1,080 (1.6)	1,128 (2.5)	1,161 (4.0)	1,629 (5.3)	1,867 (5.0)	1,939 (4.8)
Miscellaneous Goods	3,788 (9.5)	3,428 (5.8)	3,699 (5.4)	3,523 (7.6)	3,537 (12.2)	5,325 (17.4)	6,271 (16.9)	7,287 (17.9)
Etc							100 (0.3)	616 (1.5)
Total	39,806 (100)	59,866 (100)	68,822 (100)	45,809 (100)	28,896 (100)	30,650 (100)	37,163 (100)	40,804 (100)

: ( )

## (Total of Patents &amp; Utility Models)

( : )

Classification	'94	'95	'96	'97	'98	'99	'00	'01
Machinery	23,950 (28.0)	54,321 (39.3)	64,633 (40.6)	40,058 (28.9)	20,472 (19.7)	22,170 (19.9)	25,967 (18.7)	26,291 (18.0)
Chemicals	8,247 (9.6)	8,683 (6.3)	9,579 (6.0)	10,520 (7.6)	9,892 (9.5)	11,001 (9.9)	12,175 (8.7)	12,969 (8.9)
Fibers	2,991 (3.5)	3,172 (2.3)	3,120 (2.0)	3,375 (2.4)	2,639 (2.5)	2,326 (2.1)	2,700 (1.9)	3,011 (2.0)
Electris & Tele - communication	33,014 (38.6)	53,601 (38.7)	60,407 (38.0)	62,820 (45.3)	49,808 (47.9)	47,817 (43.0)	63,057 (45.3)	62,015 (42.7)
Civil Engineering & Construction	3,239 (3.8)	4,044 (2.9)	4,766 (3.0)	3,928 (2.8)	3,669 (3.5)	6,071 (5.5)	8,459 (6.1)	9,918 (6.8)
Mining & Metal	2,338 (2.7)	2,907 (2.1)	3,541 (2.2)	3,692 (2.7)	3,274 (3.1)	3,626 (3.3)	4,316 (3.1)	4,763 (3.3)
Beverage, Medical & Hygiene	4,603 (5.4)	4,542 (3.3)	5,027 (3.2)	5,632 (4.1)	6,010 (5.8)	7,046 (6.3)	9,132 (6.6)	10,065 (6.9)
Office Supplies & printing	931 (1.1)	1,046 (0.8)	1,473 (0.9)	1,715 (1.2)	1,636 (1.6)	1,470 (1.3)	1,406 (1.0)	1,562 (1.2)
Agriculture, Forestry & Marine	1,510 (1.8)	1,328 (1.0)	1,553 (1.0)	1,662 (1.2)	1,751 (1.7)	2,536 (2.3)	2,849 (2.0)	2,984 (2.1)
Miscellaneous Goods	4,695 (5.5)	4,721 (3.3)	5,049 (3.1)	5,141 (3.8)	4,933 (4.7)	7,229 (6.5)	8,745 (6.3)	10,038 (6.9)
Etc							367 (0.3)	1800 (1.2)
Total	85,518 (100)	138,365 (100)	159,148 (100)	138,543 (100)	104,084 (100)	111,292 (100)	139,173 (100)	145,416 (100)

: ( )

## (Industrial Designs)

( : )

Classification	'96	'97	'98	'99	'00	'01
A. Foodstuffs, Including Dietic Foods	49 (0.2)	148 (0.5)	109 (0.4)	223 (0.6)	173 (0.5)	231 (0.6)
B. Articles of Clothing, and Personal Belongings	2,304 (7.7)	2,018 (7)	2,182 (8.7)	2,914 (8.4)	3,295 (9.2)	3,959 (10.3)
C. Household Goods, Furnishing	3,444 (11.5)	3,266 (11.5)	3,085 (12.3)	4,643 (13.4)	4,692 (13.2)	5,509 (14.3)
D. Housing apparatus	3,383 (11.3)	3,721 (13.1)	2,486 (9.9)	4,205 (12.6)	4,945 (13.9)	4,859 (12.6)
E. Games, Toys and Sports Goods	969 (3.2)	933 (3.3)	811 (3.2)	1,154 (3.3)	1,174 (3.3)	1,198 (3.2)
F. Stationer's Goods, Desk Equipment and Office Machinery	2,977 (10.0)	3,053 (10.7)	3,182 (12.6)	4,105 (11.8)	4,255 (11.9)	4,670 (12.1)
G. Vehicles	3,389 (11.4)	2,513 (8.8)	1,284 (5.1)	1,645 (4.7)	1,474 (4.1)	1,519 (3.9)
H. Electrical and Electronic Equipment	3,747 (12.5)	3,645 (2.8)	3,236 (12.9)	3,666 (10.6)	4,154 (11.6)	4,549 (11.8)
J. General Machinery, not elsewhere specified	1,471 (4.9)	1,612 (5.7)	1,310 (5.2)	1,664 (4.8)	1,608 (4.5)	1,675 (4.3)
K. Industrial Machinery	2,746 (9.2)	2,680 (9.4)	2,423 (9.6)	2,411 (6.9)	2,340 (6.6)	2,416 (6.3)
L. Building Units and Construction Elements	3,024 (10.1)	3,047 (10.7)	2,859 (11.4)	3,414 (9.8)	3,682 (10.3)	3,907 (10.1)
M. Basic Industrial Products, not elsewhere specified	2,353 (7.9)	1,855 (6.5)	2,188 (8.7)	4,310 (12.5)	3,578 (10.0)	3,410 (8.9)
Etc	3 (0.0)	-	-	235 (0.6)	308 (0.9)	620 (1.6)
<b>Total</b>	<b>29,859 (100)</b>	<b>28,491 (90)</b>	<b>25,155 (100)</b>	<b>34,589 (100)</b>	<b>35,678 (100)</b>	<b>38,522 (100)</b>

: 1. '99

2. ( )

(Trademarks)

1)

( : )

Classification	'92	'93	'94	'95	'96	'97	'98
Machinery	6,281 (13.9)	7,869 (13.2)	10,005 (13.9)	10,169 (14.2)	6,278 (7.4)	6,976 (8.0)	3,178 (4.3)
Fibers	5,797 (12.8)	8,502 (14.3)	9,782 (13.5)	9,752 (13.6)	9,058 (10.6)	8,928 (10.2)	9,103 (12.2)
Chemicals	6,153 (13.6)	8,662 (14.5)	10,251 (14.1)	9,096 (12.6)	11,221 (13.2)	11,202 (12.9)	8,276 (11.2)
Pharmaceuticals & Sanitary	4,956 (11.0)	5,718 (9.6)	5,992 (8.3)	5,594 (7.8)	6,444 (7.6)	6,014 (6.9)	4,534 (6.1)
Food	6,910 (15.3)	9,286 (15.6)	11,460 (15.8)	11,188 (15.6)	13,085 (15.4)	11,266 (12.9)	8,887 (12.0)
Miscellaneous Goods	8,852 (19.6)	11,010 (18.5)	13,425 (18.5)	12,543 (17.5)	16,576 (19.5)	18,126 (20.8)	17,604 (23.7)
Others	151 (0.3)	196 (0.3)	267 (0.4)	267 (0.4)	5,315 (6.2)	6,145 (7.1)	5,959 (8.0)
Service Marks	6,024 (13.7)	8,350 (13.7)	11,399 (15.7)	13,243 (18.4)	17,085 (20.1)	18,408 (21.1)	16,673 (22.5)
Total	45,124 (100)	59,593 (100)	72,581 (100)	71,852 (100)	85,062 (100)	87,065 (100)	74,214 (100)

: 1. '98, 3, 1

NICE

2. ( )



2) NICE

( : )

Classification	'99	'00	'01
, ,	14,531 (12.4)	16,477 (10.9)	18,383 (12.9)
, , ,	3,412 (2.9)	3,720 (2.5)	3,667 (2.6)
, ,	16,522 (14.1)	22,790 (15.1)	21,385 (15.0)
, ,	14,602 (12.5)	14,639 (9.7)	14,489 (10.2)
가 , ,	6,518 (5.6)	7,109 (4.7)	7,781 (5.5)
, , , 가	5,928 (5.1)	6,466 (4.3)	8,235 (5.8)
, , ,	3,594 (3.1)	4,369 (2.9)	4,352 (3.0)
, ,	6,507 (5.5)	7,572 (5.0)	6,580 (4.6)
, ,	14,052 (12.0)	15,984 (10.6)	17,322 (12.2)
,	1,150 (1.0)	1,152 (0.8)	1,165 (0.8)
	30,469 (26.0)	50,725 (33.5)	39,108 (27.4)
	-	208 (0.1)	25 (0)
Total	117,285 (100)	151,211 (100)	142,492 (100)

: 1. NICE

2.( )

5. (IPC)  
(Patent and Utility Model Applications by IPC)

( : )

Classification	Patents			Utility Models		
	'99	'00	'01	'99	'00	'01
A01 ; ; ; ; ;	1,076	1,131	1,244	1,507	1,708	1,803
A21 ; 가	58	61	89	43	53	56
A22 ; ;가	33	33	20	34	40	52
A23 ;	1,316	1,669	1,852	300	287	392
A24 ; ; ;	72	65	78	85	86	137
A41	133	170	160	475	622	619
A42	45	50	61	153	190	240
A43	125	156	165	343	435	448
A44 ;	140	163	147	293	375	343
A45	186	197	272	787	887	977
A46 (Brush)	42	58	53	127	142	137
A47 가 ;가 ;가 ; ;	899	1,180	1,469	2,902	3,252	4,157
A61 ;	3,161	4,022	4,429	1,123	1,599	1,634

( : )

Classification	Patents			Utility Models		
	'99	'00	'01	'99	'00	'01
A62 ;	81	99	103	100	162	220
A63 ; ;	424	679	659	956	1,208	1,367
B01	979	1,142	1,251	360	348	522
B02 , ;	57	92	98	116	146	138
B03 ;	26	46	58	19	24	32
B04	23	28	12	11	10	13
B05 ;	255	225	241	126	131	155
B06	8	18	6	2	9	5
B07 ;	38	56	65	37	53	53
B08	120	35	67	75	44	53
B09	155	193	166	859	148	116
B21 가 가 ;	525	789	1,098	290	279	187

( : )

Classification	Patents			Utility Models		
	'99	'00	'01	'99	'00	'01
B22 ;	355	486	536	96	58	66
B23 ; 가	754	792	868	333	327	403
B24	243	224	267	116	136	126
B25 ,가 가 ;	201	248	186	200	168	180
B26 ; ;	148	121	111	208	250	244
B27 ; 가	88	76	93	63	82	79
B28 , , 가	83	91	119	38	64	70
B29 가 ;가 가	767	709	880	193	262	358
B30	24	47	60	27	41	49
B31 ; 가	42	49	67	30	50	51
B32	373	436	237	84	241	65
B41 ; ;	658	549	546	168	175	158
B42 ; ; ;	97	85	124	361	444	458

( : )

Classification	Patents			Utility Models		
	'99	'00	'01	'99	'00	'01
B43 ;	80	92	108	247	257	316
B44	118	106	111	105	164	150
B60	2,695	3,740	3,615	1,373	1,480	1,479
B61	91	93	104	78	105	92
B62	590	1,104	1,107	431	422	502
B63	135	144	196	93	130	164
B64 ; ;	61	56	78	17	43	31
B65 ; ; ;	1,033	1,239	1,275	1,579	1,713	1,735
B66 ;	477	283	241	188	231	211
B67	54	64	57	-	61	85
B68 ; , 가	18	17	7	-	17	8
B81	4	28	54	-	-	-
B82	6	12	43	-	-	-
C01	356	345	377	28	26	28
C02 , ,	667	708	794	292	443	452
C03 ; (Slag wool)	329	251	296	48	33	53
C04 , , , ;	509	552	631	27	37	39

( : )

Classification	Patents			Utility Models		
	'99	'00	'01	'99	'00	'01
C05	93	130	131	15	21	37
C06 ;	17	21	22	-	2	5
C07	2,312	2,407	2,551	-	1	-
C08 가 ; ;	1,943	2,038	2,236	5	6	19
C09 ; ; ; ; 가 ; ; 가	883	1,145	1,226	27	35	41
C10 , 가 ; ; 가 ; ; ; (Peat)	283	332	373	49	62	40
C11 , ; ; ;	170	201	178	46	43	46
C12 ; ; ; ; ; ; ; ;	805	1,185	1,285	15	29	39
C13	1	3	2	-	-	-
C14 (skins); (hides); (pelts); (leather)	26	22	13	10	5	6
C21	582	561	722	117	70	47

( : )

Classification	Patents			Utility Models		
	'99	'00	'01	'99	'00	'01
C22 ; ;	344	396	381	10	9	1
C23 ; ; ; ; ; ; ; ;	379	615	592	28	44	16
C25 ;	158	240	275	33	42	50
C30	92	86	99	1	3	-
D01 ;	226	226	226	36	43	25
D02 ; ;	64	59	87	18	23	37
D03	79	89	84	76	89	80
D04 ; ; ;	143	140	163	56	65	72
D05 ; ; (tufting)	50	88	97	46	48	64
D06 ; ; ; 가	641	725	951	241	277	330

( : )

Classification	Patents			Utility Models		
	'99	'00	'01	'99	'00	'01
D07 ;	27	20	10	15	16	6
D21 ; (Cellulose)	199	208	178	30	47	40
E01 ,	290	475	462	436	869	1,202
E02 , ;	379	547	579	305	627	932
E03 ;	149	214	256	359	564	645
E04	565	672	772	930	1,329	1,450
E05 ; ; ;	275	386	387	415	469	531
E06 , ,	140	140	124	327	364	425
E21 ;	104	93	90	57	76	89
F01 ; ;	449	644	649	107	90	121
F02 , 가	1,002	1,166	1,200	179	131	136
F03 ; ,	103	162	201	29	68	104
F04 ;	792	774	908	329	253	249



( : )

Classification	Patents			Utility Models		
	'99	'00	'01	'99	'00	'01
F15 ;	77	69	58	33	26	20
F16 ;	1,602	1,956	1,824	1,213	1,289	1,261
F17 가	74	73	80	77	88	57
F21	100	125	140	286	356	442
F22	25	39	36	20	17	30
F23 ;	276	303	246	213	232	246
F24 가 ; ;	1,224	1,511	1,326	733	982	972
F25 ; ;	764	802	1,018	335	332	348
F26	32	59	56	26	48	29
F27 (furnace) (kiln) 가 (Oven) (Retort)	76	151	163	58	43	35
F28	197	232	270	116	99	119
F41	53	71	76	49	70	76
F42 ;	29	53	60	22	21	26

( : )

Classification	Patents			Utility Models		
	'99	'00	'01	'99	'00	'01
G01 ;	2,241	2,318	2,567	493	519	658
G02	2,078	2,677	3,577	236	320	389
G03 , , ;	837	897	1,083	140	136	110
G04	53	75	69	89	120	126
G05 ;	247	309	242	36	46	53
G06 ;	3,768	14,890	9,836	491	1,068	872
G07	394	463	432	143	213	277
G08	255	438	458	136	260	249
G09 ; ; ;	950	1,058	1,256	661	888	855
G10 ;	194	295	292	79	108	106
G11	3,443	3,022	3,568	216	242	202
G12	16	1	11	5	10	1
G21 ;	119	119	102	26	32	25
H01	12,797	13,656	14,336	1,158	1,267	1,493
H02 ,	1,284	1,397	1,343	509	568	640
H03	1,241	1,141	1,079	439	49	36
H04	10,471	11,157	11,841	1,472	1,674	1,582
H05	922	1,072	1,422	347	422	460
	-	267	1,184	-	100	616
<b>Total</b>	<b>80,642</b>	<b>102,010</b>	<b>104,612</b>	<b>30,650</b>	<b>37,163</b>	<b>40,804</b>

## 6.

## (Design Applications by Articles)

( : )

Classification	'99 ( )			'00 ( )			'01 ( )		
	Kore - ans	Forei - gners	Total	Kore - ans	Forei - gners	Total	Kore - ans	Forei - gners	Total
A1	218	4	222	172	1	173	226	5	231
	(219)	(4)	(223)	(172)	(1)	(173)	(226)	(5)	(231)
B1	216	10	226	336	12	348	468	19	487
	(261)	(17)	(278)	(418)	(29)	(447)	(552)	(28)	(580)
B2	264	10	274	250	6	256	298	5	303
	(265)	(10)	(275)	(250)	(6)	(256)	(299)	(5)	(304)
B3	938	60	998	1,125	41	1,166	1,556	40	1,596
	(959)	(60)	(1,019)	(1,130)	(41)	(1,171)	(1,601)	(40)	(1,641)
B4 가	152	26	178	139	28	167	143	14	157
	(152)	(26)	(178)	(144)	(28)	(172)	(143)	(14)	(157)
B5	272	2	274	186	13	199	183	21	204
	(272)	(2)	(274)	(186)	(13)	(199)	(183)	(21)	(204)
B6	142	4	146	147	4	151	95	8	103
	(142)	(4)	(146)	(147)	(4)	(151)	(95)	(8)	(103)
B7	538	57	595	603	52	655	706	48	754
	(541)	(57)	(598)	(609)	(52)	(661)	(710)	(49)	(759)
B9	121	25	146	214	24	238	180	28	208
	(121)	(25)	(146)	(214)	(24)	(238)	(180)	(28)	(208)
C0	27	1	28	46		46	58		58
	(27)	(1)	(28)	(46)		(46)	(58)		(58)
C1 , ,	499	1	500	609	3	612	830	9	839
	(610)	(1)	(611)	(804)	(3)	(807)	(941)	(9)	(950)
C2	468	1	469	495	12	507	545	29	574
	(468)	(1)	(469)	(496)	(12)	(508)	(545)	(33)	(578)

( : )

Classification	'99 ( )			'00 ( )			'01 ( )		
	Kore - ans	Forei - gners	Total	Kore - ans	Forei - gners	Total	Kore - ans	Forei - gners	Total
C3 ,	466	28	494	373	49	422	423	41	464
	(466)	(28)	(494)	(373)	(49)	(422)	(423)	(41)	(464)
C4 가	395	55	450	397	70	467	386	80	466
	(400)	(55)	(455)	(400)	(70)	(470)	(386)	(108)	(494)
C5	1,309	90	1,399	1,141	60	1,201	1,456	70	1,526
	(1,316)	(91)	(1,407)	(1,148)	(60)	(1,208)	(1,458)	(70)	(1,528)
C6	880	50	930	853	40	893	1,002	26	1,028
	(882)	(50)	(932)	(855)	(40)	(895)	(1,002)	(26)	(1,028)
C7	245		245	337		337	406		406
	(247)		(247)	(337)		(337)	(406)		(406)
D0	28		28	36		36	25		25
	(28)		(28)	(36)		(36)	(25)		(25)
D1	268	2	270	265	3	268	197	6	203
	(274)	(2)	(276)	(265)	(3)	(268)	(197)	(6)	(203)
D2 가	1,901	27	1,928	2,559	50	2,609	2,489	26	2,515
	(1,916)	(27)	(1,943)	(2,555)	(50)	(2,605)	(2,491)	(26)	(2,517)
D3	1,332	20	1,352	1,302	24	1,326	1,347	23	1,370
	(1,334)	(20)	(1,354)	(1,307)	(24)	(1,331)	(1,347)	(23)	(1,370)
D4	344	20	364	410	16	426	485	30	515
	(344)	(20)	(364)	(410)	(16)	(426)	(485)	(30)	(515)
D5	208	18	226	271	8	279	214	12	226
	(222)	(18)	(240)	(271)	(8)	(279)	(214)	(12)	(226)
E0	59		59	41		41	57		57
	(61)		(61)	(41)		(41)	(57)		(57)
E1	263	21	284	317	20	337	279	26	305
	(265)	(21)	(286)	(318)	(20)	(338)	(279)	(26)	(305)

( : )

Classification	'99 ( )			'00 ( )			'01 ( )		
	Kore - ans	Forei - gners	Total	Kore - ans	Forei - gners	Total	Kore - ans	Forei - gners	Total
E2	423	41	464	399	38	437	453	28	481
	(421)	(41)	(462)	(399)	(38)	(437)	(453)	(28)	(481)
E3	241	15	256	292	23	315	260	39	299
	(241)	(15)	(256)	(293)	(23)	(316)	(260)	(39)	(299)
E4	87	2	89	42		42	56		56
	(87)	(2)	(89)	(42)		(42)	(56)		(56)
F0	2		2	6		6	6		6
	(2)		(2)	(6)		(6)	(6)		(6)
F1	33		33	46	1	47	55		55
	(33)		(33)	(46)	(1)	(47)	(59)		(59)
F2	436	29	465	427	91	518	524	67	591
	(440)	(29)	(469)	(427)	(92)	(519)	(524)	(67)	(591)
F3	390	7	397	544	22	566	677	11	688
	(557)	(13)	(570)	(809)	(22)	(831)	(845)	(11)	(856)
F4	1,877	100	1,977	1,879	65	1,944	2,310	73	2,383
	(2,313)	(120)	(2,433)	(2,126)	(98)	(2,224)	(2,508)	(98)	(2,606)
F5	588	10	598	622	6	628	538	3	541
	(589)	(10)	(599)	(622)	(6)	(628)	(543)	(3)	(546)
G1	248	6	254	212	6	218	211	6	217
	(248)	(6)	(254)	(213)	(6)	(219)	(211)	(6)	(217)
G2	1,290	53	1,343	1,182	58	1,240	1,212	56	1,268
	(1,293)	(53)	(1,346)	(1,182)	(58)	(1,240)	(1,212)	(56)	(1,268)
G3	42	2	44	13		13	29	1	30
	(42)	(2)	(44)	(13)		(13)	(29)	(1)	(30)
G4	1		1	2		2		4	4
	(1)		(1)	(2)		(2)		(4)	(4)

( : )

Classification	'99 ( )			'00 ( )			'01 ( )		
	Kore - ans	Forei - gners	Total	Kore - ans	Forei - gners	Total	Kore - ans	Forei - gners	Total
H0	31		31	15		15	14	8	22
	(31)		(31)	(15)		(15)	(14)	(8)	(22)
H1	722	70	792	699	154	853	829	192	1,021
	(722)	(70)	(792)	(700)	(154)	(854)	(829)	(192)	(1,021)
H2	607	33	640	588	59	647	601	46	647
	(608)	(33)	(641)	(588)	(59)	(647)	(601)	(46)	(647)
H3	803	58	861	905	80	985	1,004	96	1,100
	(803)	(58)	(861)	(906)	(82)	(988)	(1,004)	(96)	(1,100)
H4	794	118	912	992	100	1,092	1,007	174	1,181
	(796)	(118)	(914)	(992)	(100)	(1,092)	(1,007)	(174)	(1,181)
H5	367	60	427	488	69	557	484	94	578
	(367)	(60)	(427)	(489)	(69)	(558)	(484)	(94)	(578)
J0	11	1	12	14		14	22		22
	(11)	(1)	(12)	(14)		(14)	(22)		(22)
J1	153	38	191	114	14	128	116	7	123
	(153)	(41)	(194)	(114)	(14)	(128)	(116)	(7)	(123)
J2	340	108	448	332	68	400	359	48	407
	(343)	(108)	(451)	(332)	(68)	(400)	(359)	(48)	(407)
J3	47	15	62	38	11	49	51	19	70
	(50)	(15)	(65)	(38)	(11)	(49)	(51)	(19)	(70)
J4	25	13	38	24	18	42	32	20	52
	(25)	(13)	(38)	(24)	(18)	(42)	(32)	(20)	(52)
J5	101	6	107	76	3	79	85		85
	(102)	(6)	(108)	(76)	(3)	(79)	(85)		(85)
J6	192	3	195	213	1	214	175	7	182
	(195)	(3)	(198)	(213)	(1)	(214)	(175)	(7)	(182)

( : )

Classification	'99 ( )			'00 ( )			'01 ( )		
	Kore - ans	Forei - gners	Total	Kore - ans	Forei - gners	Total	Kore - ans	Forei - gners	Total
J7	561	37	598	650	32	682	701	31	732
	(561)	(37)	(598)	(650)	(32)	(682)	(701)	(31)	(732)
K0	127	3	130	143	19	162	146	15	161
	(127)	(3)	(130)	(143)	(19)	(162)	(146)	(15)	(161)
K1	274	8	282	269	17	286	287	21	308
	(275)	(8)	(283)	(269)	(17)	(286)	(287)	(21)	(308)
K2	258	5	263	200	6	206	234	4	238
	(258)	(5)	(263)	(200)	(6)	(206)	(234)	(4)	(238)
K3	479	8	487	487	16	503	514	17	531
	(479)	(8)	(487)	(498)	(16)	(514)	(515)	(17)	(532)
K4 가	276	1	277	213	1	214	190	2	192
	(277)	(1)	(278)	(213)	(1)	(214)	(190)	(2)	(192)
K5	91	6	97	93	14	107	108	5	113
	(91)	(6)	(97)	(93)	(14)	(107)	(108)	(5)	(113)
K6	236	9	245	286	7	293	279	12	291
	(236)	(9)	(245)	(286)	(7)	(293)	(279)	(12)	(291)
K7 가 , 가	159	4	163	118	10	128	116	3	119
	(159)	(4)	(163)	(118)	(10)	(128)	(116)	(3)	(119)
K8 , , ,	277	10	287	278	8	286	283	9	292
	(277)	(10)	(287)	(278)	(8)	(286)	(283)	(9)	(292)
K9	136	42	178	126	18	144	142	21	163
	(136)	(42)	(178)	(126)	(18)	(144)	(142)	(21)	(163)
L0				1		1	1		1
				(1)		(1)	(1)		(1)
L1 가	136		136	165		165	162	1	163
	(136)		(136)	(165)		(165)	(162)	(1)	(163)

( : )

Classification	'99 ( )			'00 ( )			'01 ( )		
	Kore - ans	Forei - gners	Total	Kore - ans	Forei - gners	Total	Kore - ans	Forei - gners	Total
L2	660	5	665	737	4	741	763		763
	(663)	(5)	(668)	(738)	(4)	(742)	(763)		(763)
L3 가 ,	908	6	914	990	1	991	935	3	938
	(919)	(6)	(925)	(982)	(1)	(983)	(935)	(3)	(938)
L4	330	1	331	306		306	361	1	362
	(330)	(1)	(331)	(306)		(306)	(361)	(1)	(362)
L5	1,034	6	1,040	975	12	987	938	10	948
	(1,034)	(6)	(1,040)	(984)	(12)	(996)	(938)	(10)	(948)
L6	314		314	464	5	469	729	2	731
	(314)		(314)	(484)	(5)	(489)	(729)	(2)	(731)
M0	10		10	4		4	10		10
	(10)		(10)	(4)		(4)	(10)		(10)
M1 , ,	2,089	16	2,105	1,756	24	1,780	1,687	16	1,703
	(3,440)	(30)	(3,470)	(2,726)	(27)	(2,753)	(2,609)	(21)	(2,630)
M2 ,	617	20	637	610	72	682	556	41	597
	(677)	(20)	(697)	(610)	(72)	(682)	(556)	(41)	(597)
M3 , ,	137	16	153	118	22	140	178	3	181
	(137)	(16)	(153)	(118)	(22)	(140)	(178)	(3)	(181)
	358	10	368	333	20	353	590	11	601
	(210)	(4)	(214)	(289)	(17)	(306)	(626)	(11)	(637)
Total	30,871	1,533	32,404	32,110	1,731	33,841	35,074	1,793	36,867
	(33,011)	(1,578)	(34,589)	(33,894)	(1,784)	(35,678)	(36,657)	(1,865)	(38,522)



10. .  
(Applications by Koreans and Foreign Nationals)

( : )

Classification		Number of Applications				
		Koreans	%	Foreigners	%	Total
	'93	21,459	58.8	15,032	41.2	36,491
	'94	28,564	62.5	17,148	37.5	45,712
	'95	59,236	75.5	19,263	24.5	78,499
	'96	68,413	75.7	21,913	24.3	90,326
	'97	67,346	72.6	25,388	27.4	92,734
	'98	50,596	67.3	24,592	32.7	75,188
	'99	55,970	69.4	24,672	30.6	80,642
	'00	72,831	71.4	29,179	28.6	102,010
	'01	73,714	70.5	30,898	29.5	104,612
	Total	498,129	70.5	208,085	29.5	706,214
Utility Models	'93	31,505	97.8	713	2.2	32,218
	'94	39,232	98.6	574	1.4	39,806
	'95	59,362	99.2	504	0.8	59,866
	'96	68,462	99.5	360	0.5	68,822
	'97	45,450	99.2	359	0.8	45,809
	'98	28,604	99.0	292	1.0	28,896
	'99	30,344	99.0	306	1.0	30,650
	'00	36,817	99.1	346	0.9	37,163
	'01	40,389	99.0	415	1.0	40,804
	Total	380,165	99.0	3,869	1.0	384,034

: ( )

Classification		Number of Applications				
		Koreans		Foreigners		Total
			%		%	
Industrial Designs	'93	26,200	95.0	1,368	5.0	27,568
	'94	27,664	95.3	1,369	4.7	29,033
	'95	28,382	94.7	1,596	5.3	29,978
	'96	28,091	94.1	1,768	5.9	29,859
	'97	26,675	93.6	1,816	6.4	28,491
	'98	22,144	93.3	1,588	6.7	23,732
	'99	(23,524)	(93.5)	(1,631)	(6.5)	(25,155)
	'00	30,871	95.3	1,533	4.7	32,404
	'01	(33,011)	(95.4)	(1,578)	(4.6)	(34,589)
		32,110	94.9	1,731	5.1	33,841
		(33,894)	(95.0)	(1,784)	(5.0)	(35,678)
	35,074	95.1	1,793	4.9	36,867	
	(36,657)	(95)	(1,865)	(5)	(38,522)	
	Total	257,211	(95)	14,562	(5)	271,773
		(127,086)	(95)	(6,858)	(5)	(133,944)
Trademarks	'93	46,559	78.1	13,034	21.9	59,593
	'94	56,319	77.6	16,262	22.4	72,581
	'95	55,218	76.8	16,634	23.2	71,852
	'96	66,441	78.1	18,621	21.9	85,062
	'97	66,222	76.1	20,843	23.9	87,065
	'98	42,901	74.7	14,492	25.3	57,393
	'99	(54,078)	(72.9)	(20,136)	(27.1)	(74,214)
	'00	71,262	81.6	16,070	18.4	87,332
	'01	(92,780)	(79.1)	(24,505)	(20.9)	(117,285)
		90,596	82.3	19,477	17.7	110,073
		(120,419)	(79.6)	(30,792)	(20.4)	(151,211)
	86,408	(80.7)	20,729	(19.3)	107,137	
	(111,105)	(78.0)	(31,387)	(22.0)	(142,492)	
	Total	581,926	(78.8)	156,162	(21.2)	738,088
		(378,382)	(78.0)	(106,820)	(22.0)	(485,202)

11.

## (Applications by Foreign Nationals)

(단위: 개)

Classification	patents			Utility Models		
	'99	'00	'01	'99	'00	'01
Japan	9,752	12,256	14,082	99	54	48
U.S.A	7,549	8,628	7,910	46	61	58
Germany	2,641	2,746	3,053	7	9	11
France	888	1,009	937	3		
U.K	574	604	548	1	4	
Switzerland	527	548	573			1
Netherlands	802	954	1,329		1	
Italy	219	225	212	1	2	2
Sweden	411	568	570		2	2
Canada	138	185	167	4	3	1
가 Singapore			21			1
Australia	128	155	212		2	2
Taiwan	139	178	235	135	191	272
China			51			7
가 Hungary			15			
Portugal			2			
Hong Kong	7	15	24	3		3
Others	897	1,108	957	7	17	7
Total	24,672	29,179	30,898	306	346	415

: ( 개 )

( : )

Industrial Designs			Trademarks			Total		
'99	'00	'01	'99	'00	'01	'99	'00	'01
680	812	981	3,284	4,046	5,455	13,815	17,168	20,566
(687)	(817)	(995)	(5,617)	(6,515)	(9,179)	(16,155)	(19,642)	(24,304)
424	441	322	6,150	7,207	6,641	14,169	16,337	14,931
(447)	(477)	(337)	(8,736)	(10,390)	(9,283)	(16,778)	(19,556)	(17,588)
54	96	47	1,274	1,376	1,504	3,976	4,227	4,615
(57)	(96)	(50)	(2,087)	(2,525)	(2,295)	(4,792)	(5,376)	(5,409)
69	64	71	1,186	1,170	1,298	2,146	2,243	2,306
(69)	(64)	(72)	(1,842)	(2,109)	(1,962)	(2,802)	(3,182)	(2,971)
30	27	18	742	994	968	1,347	1,629	1,534
(30)	(27)	(18)	(1,197)	(1,800)	(1,557)	(1,802)	(2,435)	(2,123)
72	47	55	820	1,019	1,053	1,419	1,614	1,682
(72)	(47)	(55)	(1,272)	(1,637)	(1,578)	(1,871)	(2,232)	(2,207)
46	56	45	348	388	504	1,196	1,399	1,878
(55)	(62)	(47)	(514)	(678)	(762)	(1,371)	(1,695)	(2,138)
32	18	27	450	648	690	702	893	931
(32)	(18)	(28)	(684)	(1,118)	(1,088)	(936)	(1,363)	(1,330)
17	14	19	163	215	225	591	799	816
(20)	(14)	(19)	(271)	(384)	(313)	(702)	(968)	(904)
6	5	4	151	182	182	299	375	354
(6)	(5)	(4)	(227)	(272)	(228)	(375)	(465)	(400)
		6			135			163
		(8)			(179)			(209)
3	9	2	131	163	173	262	329	389
(3)	(9)	(2)	(198)	(238)	(227)	(329)	(404)	(443)
14	38	30	173	269	237	461	676	774
(14)	(38)	(30)	(204)	(353)	(260)	(492)	(760)	(797)
		9			160			227
		(9)			(190)			(257)
					3			18
					(3)			(18)
					5			7
					(6)			(8)
3	1	2	131	214	135	144	230	164
(3)	(1)	(2)	(175)	(329)	(235)	(188)	(345)	(264)
83	103	155	1,067	1,586	1,361	2,054	2,814	2,480
(83)	(109)	(189)	(1,481)	(2,444)	(2,042)	(2,468)	(3,678)	(3,195)
1,533	1,731	1,793	16,070	19,477	20,729	42,581	50,733	53,835
(1,578)	(1,784)	(1,865)	(24,505)	(30,792)	(31,387)	(51,061)	(62,101)	(64,565)

11.

## (Applications by Foreign Nationals)

(단위: 개)

Classification	patents			Utility Models		
	'99	'00	'01	'99	'00	'01
Japan	9,752	12,256	14,082	99	54	48
U.S.A	7,549	8,628	7,910	46	61	58
Germany	2,641	2,746	3,053	7	9	11
France	888	1,009	937	3		
U.K	574	604	548	1	4	
Switzerland	527	548	573			1
Netherlands	802	954	1,329		1	
Italy	219	225	212	1	2	2
Sweden	411	568	570		2	2
Canada	138	185	167	4	3	1
가 Singapore			21			1
Australia	128	155	212		2	2
Taiwan	139	178	235	135	191	272
China			51			7
가 Hungary			15			
Portugal			2			
Hong Kong	7	15	24	3		3
Others	897	1,108	957	7	17	7
Total	24,672	29,179	30,898	306	346	415

: ( 개 )

( : )

Industrial Designs			Trademarks			Total		
'99	'00	'01	'99	'00	'01	'99	'00	'01
680	812	981	3,284	4,046	5,455	13,815	17,168	20,566
(687)	(817)	(995)	(5,617)	(6,515)	(9,179)	(16,155)	(19,642)	(24,304)
424	441	322	6,150	7,207	6,641	14,169	16,337	14,931
(447)	(477)	(337)	(8,736)	(10,390)	(9,283)	(16,778)	(19,556)	(17,588)
54	96	47	1,274	1,376	1,504	3,976	4,227	4,615
(57)	(96)	(50)	(2,087)	(2,525)	(2,295)	(4,792)	(5,376)	(5,409)
69	64	71	1,186	1,170	1,298	2,146	2,243	2,306
(69)	(64)	(72)	(1,842)	(2,109)	(1,962)	(2,802)	(3,182)	(2,971)
30	27	18	742	994	968	1,347	1,629	1,534
(30)	(27)	(18)	(1,197)	(1,800)	(1,557)	(1,802)	(2,435)	(2,123)
72	47	55	820	1,019	1,053	1,419	1,614	1,682
(72)	(47)	(55)	(1,272)	(1,637)	(1,578)	(1,871)	(2,232)	(2,207)
46	56	45	348	388	504	1,196	1,399	1,878
(55)	(62)	(47)	(514)	(678)	(762)	(1,371)	(1,695)	(2,138)
32	18	27	450	648	690	702	893	931
(32)	(18)	(28)	(684)	(1,118)	(1,088)	(936)	(1,363)	(1,330)
17	14	19	163	215	225	591	799	816
(20)	(14)	(19)	(271)	(384)	(313)	(702)	(968)	(904)
6	5	4	151	182	182	299	375	354
(6)	(5)	(4)	(227)	(272)	(228)	(375)	(465)	(400)
		6			135			163
		(8)			(179)			(209)
3	9	2	131	163	173	262	329	389
(3)	(9)	(2)	(198)	(238)	(227)	(329)	(404)	(443)
14	38	30	173	269	237	461	676	774
(14)	(38)	(30)	(204)	(353)	(260)	(492)	(760)	(797)
		9			160			227
		(9)			(190)			(257)
					3			18
					(3)			(18)
					5			7
					(6)			(8)
3	1	2	131	214	135	144	230	164
(3)	(1)	(2)	(175)	(329)	(235)	(188)	(345)	(264)
83	103	155	1,067	1,586	1,361	2,054	2,814	2,480
(83)	(109)	(189)	(1,481)	(2,444)	(2,042)	(2,468)	(3,678)	(3,195)
1,533	1,731	1,793	16,070	19,477	20,729	42,581	50,733	53,835
(1,578)	(1,784)	(1,865)	(24,505)	(30,792)	(31,387)	(51,061)	(62,101)	(64,565)

## 12.

## (Applications by Cities and Provinces)

( : )

Classification	Patents			Utility Models		
	'99	'00	'01	'99	'00	'01
Seoul	19,960	32,839	32,391	10,523	12,975	14,298
Busan	1,091	1,749	1,563	1,837	2,295	2,357
Daegu	1,043	1,442	1,389	1,726	1,985	2,368
Incheon	1,733	1,905	1,828	1,751	2,291	2,466
Gwangju	809	1,438	1,322	517	796	930
Daejeon	2,559	2,883	3,281	872	1,142	1,216
Ulsan	331	462	392	371	395	375
Gyeonggi	20,723	20,802	21,247	7,212	8,742	9,892
Gangwon	274	426	470	233	438	565
Chungbuk	1,549	879	792	692	805	698
Chungnam	952	1,357	1,344	729	860	1,016
Jeonbuk	426	686	692	458	648	714
Jeonnam	359	530	507	426	540	585
Gyeongbuk	3,069	3,774	4,528	1,872	1,502	1,283
Gyeongnam	932	1,266	1,356	1,008	1,272	1,440
Jeju	139	126	106	109	106	147
Korean resident abroad	21	9	16	8	10	22
		258	490		15	14
						3
<b>Total</b>	<b>55,970</b>	<b>72,831</b>	<b>73,714</b>	<b>30,344</b>	<b>36,817</b>	<b>40,389</b>

: 1.

2. ( )

( : )

Industrial Designs			Trademarks			Total		
'99	'00	'01	'99	'00	'01	'99	'00	'01
13,646	14,380	15,051	42,994	56,163	50,868	87,123	116,357	112,608
(14,741)	(15,543)	(16,036)	(57,993)	(76,469)	(66,725)	(103,217)	(137,826)	(129,450)
1,389	1,458	1,581	3,111	3,417	3,329	7,428	8,919	8,830
(1,462)	(1,568)	(1,653)	(3,583)	(3,908)	(3,989)	(7,973)	(9,520)	(9,562)
1,703	1,503	1,765	2,060	2,137	2,449	6,532	7,067	7,971
(2,143)	(1,664)	(1,952)	(2,348)	(2,636)	(3,078)	(7,260)	(7,727)	(8,787)
1,842	2,276	2,270	2,244	2,676	2,948	7,570	9,148	9,512
(1,880)	(2,297)	(2,335)	(2,649)	(3,492)	(3,458)	(8,013)	(9,985)	(10,087)
439	354	576	780	941	1,011	2,545	3,529	3,839
(440)	(377)	(579)	(981)	(1,255)	(1,520)	(2,747)	(3,866)	(4,351)
472	491	516	1,361	2,162	2,055	5,264	6,678	7,068
(489)	(509)	(521)	(1,601)	(2,939)	(2,490)	(5,521)	(7,473)	(7,508)
96	137	98	217	291	270	1,015	1,285	1,135
(96)	(141)	(99)	(270)	(361)	(376)	(1,068)	(1,359)	(1,242)
8,087	8,263	9,632	11,778	13,789	14,640	47,800	51,596	55,411
(8,394)	(8,380)	(9,807)	(14,821)	(17,430)	(17,983)	(51,150)	(55,354)	(58,929)
237	193	227	739	1,088	743	1,483	2,145	2,005
(237)	(193)	(229)	(1,051)	(1,566)	(1,087)	(1,795)	(2,623)	(2,351)
501	452	445	1,109	1,157	1,335	3,851	3,293	3,270
(507)	(468)	(448)	(1,391)	(1,556)	(1,614)	(4,139)	(3,708)	(3,552)
534	667	665	1,123	1,605	1,681	3,338	4,489	4,706
(607)	(731)	(718)	(1,312)	(1,826)	(1,982)	(3,600)	(4,774)	(5,060)
400	426	386	784	1,094	1,040	2,068	2,854	2,832
(433)	(475)	(392)	(979)	(1,645)	(1,376)	(2,296)	(3,454)	(3,174)
245	271	324	586	824	795	1,616	2,165	2,211
(247)	(273)	(326)	(774)	(1,067)	(1,088)	(1,806)	(2,410)	(2,506)
625	521	653	1,067	1,321	1,336	6,633	7,118	7,800
(651)	(553)	(664)	(1,455)	(1,710)	(1,828)	(7,047)	(7,539)	(8,303)
574	644	703	1,066	1,630	1,574	3,580	4,812	5,073
(590)	(648)	(716)	(1,278)	(2,123)	(2,089)	(3,808)	(5,309)	(5,601)
62	62	155	220	272	282	530	566	690
(65)	(62)	(155)	(267)	(404)	(369)	(580)	(698)	(777)
19	7	8	23	11	14	71	37	60
(19)	(7)	(8)	(27)	(12)	(15)	(75)	(38)	(61)
	5	1		18	2	0	23	6
(10)	(5)	(1)		(20)	(2)	(10)	(298)	(6)
		18			36		273	558
		(18)			(36)		(0)	(558)
30,871	32,110	35,074	71,262	90,596	86,408	188,447	232,354	235,585
(33,011)	(33,894)	(36,657)	(92,780)	(120,419)	(111,105)	(212,105)	(263,961)	(261,865)



## 13.

## (Issuance of Priority Certificate)

( : )

Classification	Patents			Utility Models			Industrial Designs			Trademarks			Total		
	'99	'00	'01	'99	'00	'01	'99	'00	'01	'99	'00	'01	'99	'00	'01
Total	11,753	17,018	16,962	837	1,076	1,080	543	1,077	1,179	233	1,486	860	13,366	20,657	20,081
Japan	2,393	3,724	2,968	181	235	205	64	111	141	30	177	98	2,668	4,247	3,412
Hong Kong	21	24	17	6	7	1	12	10	20	4	20	16	43	61	54
Taiwan	119	141	147	7	13	4	12	19	20	8	33	19	146	206	190
가 Singapore	61	67	75	3	5	6	3	5	25	5	39	16	72	116	122
Malaysia	27	82	40	5	5	9	4	4	17	7	24	7	43	115	73
Tailand	32	79	42	6	2	3	-	5	14	1	21	3	39	107	62
Srilanka	-	-	-	-	1	-	-	-	-	-	-	2	-	1	2
India	110	102	161	8	2	3	4	3	11	2	21	8	124	128	183
Turkey	8	25	7	-	2	-	-	34	3	-	6	2	8	67	12
Kuwait	-	2	2	-	-	-	-	-	-	3	1	2	3	3	4
Saudi Arabia	3	32	11	-	-	1	-	1	2	1	7	8	4	40	22
Indonesia	103	95	76	6	5	11	7	8	24	2	25	8	118	133	119

( : )

Classification	Patents			Utility Models			Industrial Designs			Trademarks			Total		
	'99	'00	'01	'99	'00	'01	'99	'00	'01	'99	'00	'01	'99	'00	'01
Philippines	48	37	38	2	2	3	2	4	4	3	20	13	55	63	58
Pakistan	4	9	14	-	-	1	-	-	-	-	5	1	4	14	16
Australia	109	220	204	9	8	9	21	39	16	6	32	16	145	299	245
New Zealand	4	15	18	-	3	2	-	-	2	1	12	5	5	30	27
Germany	536	650	665	37	37	37	37	102	97	11	57	33	621	846	832
France	187	192	138	5	14	8	35	35	63	2	28	15	229	269	224
Italy	-	80	87	-	11	4	-	22	37	-	21	13	0	134	141
Netherlands	44	47	56	2	1	-	6	12	20	2	4	1	54	64	77
Belgium	-	2	7	-	-	-	-	6	5	-	2	1	0	10	13
United Kingdom	398	359	312	13	17	9	35	31	61	5	30	38	451	437	420
Sweden	29	26	21	-	3	2	7	8	8	2	5	7	38	42	38
Denmark	1	6	8	-	2	-	-	6	2	-	4	6	1	18	16
Finland	2	9	16	-	1	-	-	2	2	-	6	-	2	18	18

( : )

Classification	Patents			Utility Models			Industrial Designs			Trademarks			Total		
	'99	'00	'01	'99	'00	'01	'99	'00	'01	'99	'00	'01	'99	'00	'01
Egypt	7	27	22	-	-	1	-	-	2	3	11	5	10	38	30
Norway	1	9	5	-	1	-	-	6	5	-	8	3	1	24	13
Benelux	-	-	-	-	-	-	-	-	5	-	4	5	0	4	10
C. I. S	263	66	68	10	3	4	7	3	12	-	36	6	280	108	90
Austria	7	16	16	2	1	0	-	6	1	-	7	6	9	30	23
Switzerland	13	15	15	1	3	-	4	8	5	20	8	6	38	34	26
Spain	12	18	16	1	3	2	5	16	13	-	7	8	18	44	39
Greece	5	11	5	-	-	1	2	42	1	1	7	3	8	60	10
U.S.A	4,699	6,582	6,760	299	339	306	139	200	178	55	242	173	5,192	7,363	7,417
Canada	93	159	111	8	15	14	7	24	5	10	45	18	118	243	148
Mexico	23	53	89	5	3	6	5	7	6	1	9	7	34	72	108
Panama	1	2	-	-	-	1	-	2	4	-	8	4	1	12	9
Brazil	92	134	146	6	4	8	-	11	22	1	17	8	99	166	184

( : )

Classification	Patents			Utility Models			Industrial Designs			Trademarks			Total		
	'99	'00	'01	'99	'00	'01	'99	'00	'01	'99	'00	'01	'99	'00	'01
Venezuela	5	9	5	-	-	-	-	-	-	1	5	4	6	14	9
Argentina	32	30	18	-	3	2	2	5	1	2	9	8	36	47	29
Ireland	1	-	-	-	-	-	-	-	1	-	-	-	1	-	1
China	1,171	1,693	2,089	85	128	189	74	179	249	12	141	89	1,342	2,141	2,616
E P O	281	237	982	33	15	42	-	1	2	-	8	36	314	261	1,062
P C T	-	-	-	-	-	-	-	-	-	-	-	-	0	0	0
Viet Nam	11	15	26	2	-	1	5	3	11	2	11	4	20	29	42
Chile	12	37	12	-	2	1	2	33	5	1	9	4	15	81	22
Others	785	1,880	1,447	95	180	184	42	64	57	29	294	125	951	2,418	1,813

## 14. PCT

(Status of International Applications under the PCT)

PCT : 2,314  
 : 837 , 1 , 1,476  
 : 264 , 4 , 2 , 2,044

가 (Status of the Number of Designated State)

( : )

Classification	Designated State's Number				
	'97	'98	'99	'00	'01
U.S.A	217	330	629	1,325	2,068
Japan	275	443	784	1,488	2,235
Australia	163	247	582	1,227	2,017
EPO	261	442	-	-	-
Denmark	85	118	1,140	2,453	3,993
Brazil	152	228	541	1,173	1,954
United Kingdom	98	163	1,165	2,508	4,041
Romania	91	144	372	1,024	1,886
Russian Federation	149	209	816	2,107	3,742
Sudan	81	110	645	1,950	3,641

( :)

Classification	Designated State's Number				
	'97	'98	'99	'00	'01
Norway	98	160	403	1,065	1,907
Rep. of Korea	64	107	264	533	269
Finland	89	118	1,140	2,450	3,988
가 Hungary	103	155	398	1,051	1,895
가 Bulgaria	92	145	377	1,026	1,882
가 Madagascar	85	129	353	1,008	1,865
Malawi	81	110	641	1,951	3,637
Sri Lanka	88	138	365	1,021	1,874
OAPI	82	140	248	-	-
Others	4,707	7,855	43,202	119,226	220,388
Total	7,061	11,491	54,065	144,586	263,282

## (Examinations)

1.

(Number of examination Disposals by Years)

( : )

Classification	Patents	Utility Models	sub - Total	Industrial Designs	Trade - marks	Total
1960	592	1,231	1,823	368	1,266	3,457
1961	871	1,660	2,531	443	1,483	4,457
1962	782	1,766	2,548	555	1,900	5,003
1963	775	1,993	2,768	774	1,458	5,000
1964	797	2,070	2,867	748	1,646	5,261
1965	750	2,077	2,827	729	2,069	5,625
1966	870	2,841	3,711	1,355	2,820	7,886
1967	1,230	3,732	4,962	1,843	3,170	9,975
1968	1,094	4,086	5,180	2,750	3,486	11,416
1969	1,079	4,759	5,838	3,413	3,495	12,746
1970	1,328	5,175	6,503	4,381	4,439	15,323
1971	1,760	8,827	10,587	6,296	6,665	23,548
1972	1,366	6,476	7,842	5,513	6,139	19,494
1973	1,463	6,947	8,410	5,588	9,632	23,630
1974	1,581	5,680	7,261	6,435	8,660	22,356
1975	1,432	4,487	5,919	3,309	5,864	15,092
1976	2,025	7,498	9,523	4,790	8,512	22,825
1977	1,817	5,141	6,958	7,968	13,929	28,855
1978	2,249	9,410	11,659	8,016	13,216	32,891

( : )

Classification	Patents	Utility Models	sub - Total	Industrial Designs	Trade - marks	Total
1979	3,910	7,670	11,580	8,098	16,179	35,857
1980	4,061	7,737	11,798	8,742	15,426	35,966
1981	4,124	7,971	12,095	9,255	13,259	34,609
1982	5,397	7,541	12,938	10,057	14,261	37,256
1983	4,594	6,595	11,189	11,570	18,841	41,600
1984	4,358	7,359	11,717	13,384	22,900	48,001
1985	3,407	8,309	11,716	14,564	23,541	49,821
1986	3,930	9,515	13,445	16,271	25,693	55,409
1987	4,220	8,905	13,125	17,627	25,616	56,368
1988	4,839	9,227	14,066	17,370	26,079	57,515
1989	7,047	15,984	23,031	21,409	32,400	76,840
1990	11,808	21,182	32,990	21,668	38,308	92,966
1991	13,256	19,358	32,614	20,595	45,680	98,889
1992	14,724	17,289	32,013	20,250	48,666	100,929
1993	16,395	16,663	33,058	20,606	49,147	102,811
1994	16,047	16,616	32,663	21,796	48,656	103,115
1995	20,060	20,570	40,630	28,170	57,702	126,502
1996	23,011	20,893	43,904	29,799	59,864	133,567
1997	36,246	29,336	65,582	38,455	90,075	194,112
1998	86,364	58,619	144,983	31,176	117,432	293,591
1999	86,978	57,722	144,700	(34,416)	(123,735)	(303,134)
2000	68,338	68,779	137,117	26,324	72,908	243,932
2001	72,410	62,924	135,334	(28,553)	(93,427)	(266,680)
				27,540	83,358	248,015
				(29,446)	(110,181)	(276,744)
				31,111	84,802	251,247
				(32,729)	(115,173)	(283,236)

: 1. ( , , )

2. ( ) .



2.  
(Status of Examined and Unexamined Applicatons)

( : )

Classification		Applications	Disposals	Pending
Patents	'98	75,188	86,364	325,810
	'99	80,642	86,978	304,986
	'00	102,010	68,338	352,438
	'01	104,612	72,410	384,423
Utility Models	'98	28,896	58,619	180,467
	'99	30,650	57,722	101,061
	'00	37,163	68,779	74,773
	'01	40,804	62,924	52,589
Industrial Designs	'98	23,732	31,176	15,115
		(25,155)	(34,416)	(15,884)
	'99	32,404	26,324	21,195
		(34,589)	(28,553)	(21,920)
	'00	33,841	27,540	28,365
	(35,678)	(29,446)	(29,108)	
	'01	36,867	31,111	34,118
		(38,522)	(32,729)	(34,838)
Trademarks	'98	57,393	117,432	62,938
		(74,214)	(123,735)	(73,456)
	'99	87,332	72,908	77,362
		(117,285)	(93,427)	(97,314)
	'00	110,073	83,358	116,871
	(151,211)	(110,181)	(138,608)	
	'01	107,137	84,802	139,184
		(142,492)	(115,173)	(179,135)
Total	'98	185,209	293,591	584,330
		(203,453)	(303,134)	(595,617)
	'99	231,028	243,932	504,604
		(263,166)	(266,680)	(525,281)
	'00	283,087	248,015	572,447
	(326,062)	(276,744)	(594,927)	
	'01	289,420	251,247	610,314
		(326,430)	(283,236)	(650,985)

: 1. 1999 , 2000 1  
2. ( ) .

### 3. (Details of Examined Applications)

가.

( : )

Classification		Details of Decision			Total
		Decision for Registration	Final Rejection	/ / Withdrawal/ Abandoned/ Invalidated	
Patents	'98	62,955	21,941	1,468	86,364
	'99	58,604	23,275	5,099	86,978
	'00	33,149	12,228	9,148	54,525
	'01	36,653	14,651	21,106	72,410
Utility Models	'98	34,646	23,125	848	58,619
	'99	32,281	20,996	4,445	57,722
	'00	43,426	8,601	11,385	63,412
	'01	44,139	8,201	10,584	62,924
Industrial Designs	'98	25,924 (28,906)	5,252 (5,510)	-	31,176 (34,416)
	'99	23,293 (24,489)	3,031 (4,064)	-	26,324 (28,553)
	'00	21,792 (23,374)	3,848 (4,369)	2,153	27,793 (27,743)
	'01	23,988 (25,278)	4,374 (4,702)	2,749	31,111 (32,729)
Trademarks	'98	85,501 (88,644)	31,931 (35,091)	-	117,432 (123,735)
	'99	50,501 (68,363)	22,407 (25,064)	-	72,908 (93,427)
	'00	49,258 (71,401)	19,760 (24,932)	3,004	72,022 (96,333)
	'01	57,468 (79,850)	23,970 (31,959)	3,364	84,802 (115,173)
Total	'98	209,026 (215,151)	82,249 (85,667)	2,316	293,591 (303,134)
	'99	164,679 (183,737)	69,709 (73,399)	9,544	243,932 (266,680)
	'00	147,625 (171,350)	44,437 (50,130)	25,690	217,752 (242,013)
	'01	162,248 (185,920)	51,196 (59,513)	37,803	251,247 (283,236)

: ( )

. 1 ( , ) ( : )

Classification		Details of Decision					TOTAL
		/	/	( )		.	
Patents	'01	13,797	38,897	128	275	2,664	55,761
Utility Models	'01	38,960	15,097	-	48	95	54,200

. 1 ( , ) ( : )

Classification		Details of Decision			TOTAL
		/			
Industrial Designs	'01	18,170	13,713	15	31,898
		(19,060)	(14,566)	(19)	(33,645)
Trademarks	'01	47,445	42,636	353	90,434
		(60,476)	(62,195)	(408)	(123,079)

: ( ) .

#### 4. (Status of Request for Examination)

##### 가. (Patents)

Number of Request for Examination	Number of Application						
		'95		'96		'97	
		78,499		90,326		92,734	
		( )	( )	( )	( )	( )	( )
	'95	39,363	50.1%				
	'96	3,842	4.9%	48,107	53.3%		
	'97	4,999	6.4%	7,014	7.8%	54,029	58.3%
	'98	1,592	2.0%	1,284	1.4%	1,032	1.1%
	'99	2,378	3.0%	2,379	2.6%	2,264	2.4%
	'00	5,920	7.5%	3,236	3.6%	3,431	3.7%
	'01			6,827	7.6%	4,049	4.4%
		58,094	74.0%	68,847	76.2%	64,805	69.9%

##### . (Utility Models)

Number of Request for Examination	Number of Application						
		'95		'96		'97	
		59,866		68,822		45,809	
		( )	( )	( )	( )	( )	( )
	'95	28,987	48.4%				
	'96	3,738	6.2%	32,453	47.2%		
	'97	6,182	10.3%	4,819	7.0%	30,178	65.9%
	'98	1,209	2.0%	942	1.4%	190	0.4%
	'99	-	-	1,454	2.1%	719	1.6%
	'00	-	-	-	-	1,585	3.5%
	'01						
		40,116	67.0%	39,668	57.6%	32,672	71.3%

: 1. (%) = / × 100  
 2. '99. 7 가 .

'98	'99	'00	'01				
75,188	80,642	102,010	104,612				
( ) ( ) ( ) ( ) ( ) ( ) ( ) ( )				624,011			
				39,363	6.3%		
				51,949	8.3%		
				66,042	10.6%		
36,312	48.3%			40,220	6.4%		
3,325	4.4%	42,788	53.1%	53,134	8.5%		
2,575	3.4%	2,433	3.0%	60,203	59.0%		
4,039	5.4%	2,659	3.3%	2,080	2.0%	62,027	59.3%
46,251	61.5%	47,880	59.4%	62,283	61.1%	62,027	59.3%
				410,187	65.7%		

'98	'99	'00	'01				
28,896	30,650	37,163	40,804				
( ) ( ) ( ) ( ) ( ) ( ) ( ) ( )				312,010			
				28,987	9.3%		
				36,191	11.6%		
				41,179	13.2%		
18,400	63.7%			20,741	6.6%		
630	2.2%	10,839	35.4%	13,642	4.4%		
977	3.4%	1,822	5.9%	1,732	4.7%		
1,772	6.1%	304	1.0%			88	0.2%
21,779	75.4%	12,965	42.3%	1,732	4.7%	88	0.2%
				149,020	47.8%		

(Patents & Utility Models)

Number of Request for Examination	Number of Application						
		'95		'96		'97	
		138,365		159,148		138,543	
		( )	( )	( )	( )	( )	( )
	'95	68,350	49.4%				
	'96	7,580	5.5%	80,560	50.6%		
	'97	11,181	8.1%	11,833	7.4%	84,207	60.8%
	'98	2,801	2.0%	2,226	1.4%	1,222	0.9%
	'99	2,378	1.7%	3,833	2.4%	2,983	2.2%
	'00	5,920	4.3%	3,236	2.0%	5,016	3.6%
	'01			6,827	4.3%	4,049	2.9%
		98,210	71.0%	108,515	68.2%	97,477	70.4%

: '99

가

'98	'99	'00	'01													
104,084	111,292	139,173	145,416													
( ) ( ) ( ) ( ) ( ) ( ) ( ) ( )					936,021											
				68,350					7.3%							
				88,140					9.4%							
				107,221					11.5%							
54,712	52.6%					60,961					6.5%					
3,955	3.8%	53,627	48.2%					66,776					7.1%			
3,552	3.4%	4,255	3.8%	61,935					83,914					9.0%		
5,811	5.6%	2,963	2.7%	2,080	1.5%	62,115					83,845					9.0%
68,030	65.4%	60,845	54.7%	64,015	46.0%	62,115					559,207					59.7%

5.  
(Publication Decisions and Oppositions)

( : )

Classification		'96	'97	'98	'99	'00	'01
Patents	Publication	16,552	10,756	-	-	-	-
	Opposition	219	213	216	315	195	158
	Acceptance of opposition	34	39	12	13	40	30
Utility Models	Publication	10,524	6,568	-	-	-	-
	Opposition	207	208	173	138	182	107
	Acceptance of opposition	32	34	12	5	16	28
Sub - Total	Publication	27,076	17,324	-	-	-	-
	Opposition	426	421	389	453	377	265
	Acceptance of opposition	66	73	24	18	56	58
Industrial Designs	Publication	-	-	-	-	-	-
	Opposition	-	-	-	-	31	31
	Acceptance of opposition	-	-	-	-	4	3
Trademarks	Publication	30,164	69,605	76,692	33,398	42,104	47,137
	Opposition	2,420	4,142	6,135	1,724	1,775	1,880
	Acceptance of opposition	645	757	1,403	1,949	580	849
Total	Publication	57,240	86,929	76,692	33,398	42,104	47,137
	Opposition	2,846	4,563	6,524	2,177	2,183	2,176
	Acceptance of opposition	711	830	1,427	1,967	640	910



6.

## (Rate of Publication Decisions)

( :%)

Classification				Industrial Designs	Trademarks
	Sub - Total	Patents	Utility Models		
'91	65	81	53	76	72
'92	65	79	54	77	73
'93	64	76	53	79	75
'94	64	75	53	80	71
'95	63	74	52	77	68
'96	63	74	52	82	72
'97	47	57	36	82	78
'98	68	74	60	84	69
'99	65	72	54	88	63
'00	79	73	83	85	68
'01	78	71	84	85	71

(Registrations)

1. (Number of Registrations by Years)

Classification	Patents	Utility Models	sub - Total	Industrial Designs	Trade - marks	Total
1948	4	2	6	5	-	11
1949	7	10	17	10	-	27
1950	5	6	11	7	-	18
1951	-	1	1	-	-	1
1952	21	14	35	-	138	173
1953	8	20	28	14	150	192
1954	29	31	60	70	393	523
1955	52	73	125	174	419	718
1956	81	135	216	108	739	1,063
1957	58	123	181	132	701	1,014
1958	119	177	296	143	963	1,402
1959	191	303	494	183	1,032	1,709
1960	219	285	504	174	815	1,493
1961	188	245	433	199	968	1,600
1962	99	233	332	185	1,221	1,738
1963	223	493	716	386	1,045	2,147
1964	213	480	693	318	1,178	2,189
1965	288	556	844	264	1,506	2,614
1966	256	600	856	727	2,145	3,728
1967	428	819	1,247	979	2,165	4,391
1968	359	828	1,187	1,315	2,712	5,214
1969	317	918	1,235	1,688	2,180	5,103
1970	266	864	1,130	1,657	2,585	5,372
1971	229	1,141	1,370	2,324	4,724	8,418
1972	218	1,145	1,363	2,235	3,830	7,428
1973	199	999	1,198	2,443	4,681	8,322

:

Classification	Patents	Utility Models	sub - Total	Industrial Designs	Trade - marks	Total
1974	322	1,174	1,496	3,090	5,955	10,541
1975	442	1,046	1,488	1,589	2,950	6,027
1976	479	1,115	1,594	1,462	4,419	7,475
1977	274	577	851	1,859	3,989	6,699
1978	427	999	1,426	3,158	7,504	12,088
1979	1,419	1,781	3,200	3,592	7,206	13,998
1980	1,632	1,753	3,385	4,071	7,845	15,301
1981	1,808	1,691	3,499	3,731	6,769	13,999
1982	2,609	2,514	5,123	4,751	7,793	17,667
1983	2,433	2,079	4,512	6,367	11,022	21,901
1984	2,365	2,360	4,725	7,109	11,674	23,508
1985	2,268	2,327	4,595	8,250	14,453	27,298
1986	1,894	2,758	4,652	8,660	15,086	28,398
1987	2,330	3,419	5,749	11,552	14,708	32,009
1988	2,174	3,108	5,282	10,502	17,272	33,056
1989	3,972	5,311	9,283	12,561	22,263	44,107
1990	7,762	8,846	16,608	13,927	23,790	54,325
1991	8,690	8,370	17,060	13,723	23,876	54,659
1992	10,502	7,870	18,372	13,635	30,298	62,305
1993	11,446	7,592	19,038	13,133	30,392	62,563
1994	11,683	7,817	19,500	13,695	25,409	58,604
1995	12,512	8,149	20,661	16,986	29,811	67,458
1996	16,516	9,191	25,707	20,192	26,464	72,363
1997	24,579	13,713	38,292	24,633	42,484	105,409
1998	52,900	25,717	78,617	24,931	59,611	163,159
1999	62,635	32,868	95,503	19,636	32,968	148,107
2000	34,956	41,745	76,701	18,845	30,849	126,395
2001	34,675	43,842	78,517	18,650	33,683	130,850
Total	319,781	260,233	580,014	320,030	586,833	1,486,877

## 2.

## (Patents and Utility Models Registrations by Industries)

## 가. (Patents)

Classification	'94	'95	'96	'97	'98	'99	'00	'01
Machinery	1,546 (13.2)	1,948 (15.6)	2,644 (16.0)	4,297 (17.5)	10,868 (20.5)	12,716 (20.3)	5,783 (16.5)	6,671 (19.2)
Chemicals	1,782 (15.3)	2,014 (16.1)	3,178 (19.2)	3,508 (14.3)	7,210 (13.6)	6,977 (11.1)	3,442 (9.8)	3,644 (10.5)
Fibers	329 (2.8)	522 (4.2)	513 (3.1)	862 (3.5)	1,108 (2.1)	1,471 (2.3)	613 (1.7)	630 (1.8)
Electric & Tele-communication	6,303 (54.0)	6,104 (48.8)	7,324 (44.3)	12,031 (48.9)	26,743 (50.6)	33,117 (52.9)	20,917 (59.8)	18,705 (53.9)
Civil Engineering & Construction	234 (2.0)	306 (2.5)	411 (2.5)	610 (2.5)	1,393 (2.6)	1,706 (2.7)	746 (2.1)	947 (2.8)
Mining & Metal	535 (4.6)	606 (4.8)	936 (5.7)	809 (3.3)	1,222 (2.3)	1,954 (3.1)	998 (2.8)	1,234 (3.6)
Beverage, Medical & Hygiene	599 (5.1)	554 (4.4)	900 (5.5)	1,373 (5.6)	2,669 (5.0)	2,544 (4.2)	1,527 (4.3)	1,700 (4.9)
Office Supplies & printing	110 (0.9)	137 (1.1)	142 (0.9)	322 (1.3)	501 (0.9)	725 (1.1)	187 (0.5)	257 (0.7)
Agriculture, Forestry & Marine	61 (0.5)	92 (0.7)	121 (0.7)	189 (0.8)	319 (0.6)	424 (0.7)	219 (0.6)	310 (0.9)
Miscellaneous Goods	184 (1.6)	229 (1.8)	347 (2.1)	578 (2.3)	867 (1.6)	1,001 (1.6)	524 (1.4)	577 (1.7)
Not elsewhere specified								
Total	11,683 (100)	12,512 (100)	16,516 (100)	24,579 (100)	52,900 (100)	62,635 (100)	34,956 (100)	34,675 (100)

(Utility Models)

Classification	'94	'95	'96	'97	'98	'99	'00	'01
Machinery	1,559 (19.9)	2,298 (28.2)	2,818 (30.7)	5,295 (38.6)	10,051 (39.1)	12,408 (37.8)	11,936 (28.6)	11,777 (26.9)
Chemicals	159 (2.0)	277 (3.4)	291 (3.2)	337 (2.5)	520 (2.0)	773 (2.4)	1,449 (3.5)	1,658 (3.8)
Fibers	193 (2.5)	354 (4.4)	304 (3.3)	419 (3.1)	1,041 (4.0)	1,222 (3.7)	1,358 (3.3)	1,280 (2.9)
Electric & Tele-communication	3,816 (48.8)	2,976 (36.5)	2,771 (30.1)	4,091 (29.8)	8,669 (33.7)	8,927 (27.2)	9,842 (23.6)	9,315 (21.2)
Civil Engineering & Construction	524 (6.7)	508 (6.2)	723 (7.9)	1,035 (7.5)	1,914 (7.4)	2,838 (8.6)	4,998 (12.0)	6,035 (13.8)
Mining & Metal	176 (2.3)	353 (4.3)	316 (3.4)	392 (2.9)	489 (1.9)	794 (2.4)	1,117 (2.7)	1,006 (2.3)
Beverage, Medical & Hygiene	207 (2.6)	196 (2.4)	378 (4.1)	331 (2.4)	545 (2.1)	858 (2.6)	1,935 (4.6)	2,322 (5.3)
Office Supplies & printing	158 (2.0)	164 (2.0)	154 (1.7)	216 (1.6)	310 (1.2)	562 (1.7)	827 (2.0)	924 (2.1)
Agriculture, Forestry & Marine	237 (3.0)	249 (3.1)	382 (4.2)	458 (3.3)	689 (2.8)	1,099 (3.3)	1,991 (4.8)	2,225 (5.1)
Miscellaneous Goods	788 (10.1)	774 (9.5)	1,054 (11.4)	1,139 (8.3)	1,489 (5.8)	3,387 (10.3)	6,292 (15.1)	7,299 (16.6)
Not elsewhere specified								1 (0)
Total	7,817 (100)	8,149 (100)	9,191 (100)	13,713 (100)	25,717 (100)	32,868 (100)	41,745 (100)	43,842 (100)

(Total of Patents & Utility Models)

Classification	'94	'95	'96	'97	'98	'99	'00	'01
Machinery	3,105 (15.9)	4,246 (20.6)	5,462 (21.2)	9,592 (25.0)	20,919 (26.6)	25,124 (26.3)	17,719 (23.1)	18,448 (23.5)
Chemicals	1,941 (10.0)	2,291 (11.1)	3,469 (13.2)	3,845 (10.1)	7,730 (9.8)	7,750 (8.1)	4,891 (6.4)	5,302 (6.8)
Fibers	522 (2.7)	876 (4.2)	817 (3.5)	1,281 (3.3)	2,149 (2.7)	2,693 (2.8)	1,971 (2.6)	1,910 (2.4)
Electric & Tele- communication	10,119 (51.9)	9,080 (43.9)	10,095 (39.3)	16,122 (42.1)	35,412 (45.0)	42,044 (44.0)	30,759 (40.1)	28,020 (35.7)
Civil Engineering & Construction	758 (3.9)	814 (3.9)	1,134 (4.4)	1,645 (4.3)	3,307 (4.2)	4,544 (4.8)	5,744 (7.5)	6,982 (8.9)
Mining & Metal	711 (3.6)	959 (4.6)	1,252 (4.9)	1,201 (3.1)	1,711 (2.2)	2,748 (2.9)	2,115 (2.8)	2,240 (2.9)
Beverage, Medical & Hygiene	806 (4.1)	750 (3.6)	1,278 (5.0)	1,704 (4.5)	3,214 (4.1)	3,402 (3.6)	3,462 (4.5)	4,022 (5.1)
Office Supplies & printing	268 (1.4)	301 (1.5)	296 (1.2)	538 (1.4)	811 (1.0)	1,287 (1.3)	1,014 (1.3)	1,181 (1.5)
Agriculture, Forestry & Marine	298 (1.5)	341 (1.7)	503 (2.0)	647 (1.7)	1,008 (1.3)	1,523 (1.6)	2,210 (2.9)	2,535 (3.2)
Miscellaneous Goods	972 (5.0)	1,003 (4.9)	1,401 (5.4)	1,717 (4.5)	2,356 (3.0)	4,388 (4.6)	6,816 (8.8)	7,876 (10.0)
Not elsewhere specified								1 (0)
Total	19,500 (100)	20,661 (100)	25,707 (100)	38,292 (100)	78,617 (100)	95,503 (100)	76,701 (100)	78,517 (100)

3. (IPC)  
(Patents and Utility Models Registratons by IPC)

(단위: 개)

Classification	Patents			Utility Models			'01 Total
	'99	'00	'01	'99	'00	'01	
A 01 ; ; ; ;	483	238	377	1,008	1,819	2,061	2,438
A 21 ; 가	22	11	20	36	44	77	97
A 22 ; ;가	19	8	15	39	38	60	75
A 23 ;	477	284	337	165	332	347	684
A 24 ; ; ;	30	31	38	39	70	120	158
A 41	48	20	30	205	635	578	608
A 42	9	13	21	67	209	219	240
A 43	41	18	42	189	421	455	497
A 44 ;	63	57	70	130	433	369	439
A 45	46	20	62	373	890	1,031	1,093
A 46 (Brush)	12	17	13	52	119	123	136
A 47 가 ;가 ;가 ; ;	683	277	256	2,252	3,261	4,095	4,351
A 61 ;	1,389	798	967	576	1,430	1,683	2,650

( : )

Classification	Patents			Utility Models			'01 Total
	'99	'00	'01	'99	'00	'01	
A 62 ;	46	31	69	81	182	211	280
A 63 ; ;	144	113	122	471	1,168	1,289	1,411
B 01	667	307	332	208	418	506	838
B 02 , , ;	50	21	24	91	159	162	186
B 03 ;	64	23	11	41	36	23	34
B 04	21	5	8	9	13	11	19
B 05 ;	140	96	116	112	126	168	284
B 06	3	4	2	1	9	4	6
B 07 ;	33	19	22	40	50	64	86
B 08	43	18	17	66	57	48	65
B 09	146	61	107	110	138	176	283
B 21 가 ;	410	116	263	292	426	408	671



( : )

Classification	Patents			Utility Models			'01 Total
	'99	'00	'01	'99	'00	'01	
B 22 ;	350	114	149	109	121	98	247
B 23 ; 가	632	342	322	461	436	512	834
B 24	92	72	87	76	149	162	249
B 25 ;가 가 ; ;	295	86	83	260	242	195	278
B 26 ; ;	50	23	28	114	238	261	289
B 27 ; 가	33	20	32	36	76	87	119
B 28 , , 가	68	32	55	33	77	60	115
B 29 가 ;가 가	503	301	283	223	311	381	664
B 30	88	27	9	72	50	52	61
B 31 가 ;	36	19	16	19	49	63	79
B 32	258	119	130	38	193	112	242
B 41 ; ;	716	230	291	240	168	199	490
B 42 ; ; ;	33	20	15	189	428	480	495

( : )

Classification	Patents			Utility Models			'01 Total
	'99	'00	'01	'99	'00	'01	
B 43 ;	37	11	19	144	262	274	293
B 44	32	24	21	38	140	165	186
B 60	3,487	1,307	1,129	3,883	2,138	1,940	3,069
B 61	40	33	41	64	145	131	172
B 62	533	422	347	783	742	647	994
B 63	59	36	60	48	114	173	233
B 64 ; ;	34	21	31	21	40	17	48
B 65 ; ; ;	616	212	449	923	1,831	1,928	2,377
B 66 ; ;	232	163	150	166	322	264	414
B 67	58	15	17	41	46	81	98
B 68 ; ,가	1	5	9	3	16	8	17
B81	-	-	1	-	-	-	1
B82	-	-	1	-	-	-	1
C 01	176	107	89	10	24	23	112
C 02 , ,	382	155	317	184	430	502	819
C 03 ; (Slag wool)	174	96	89	21	38	43	132
C 04 , , , ;	368	170	261	13	26	26	287

( : )

Classification	Patents			Utility Models			'01 Total
	'99	'00	'01	'99	'00	'01	
C 05	78	34	30	20	15	35	65
C 06 ;	16	10	1	-	1	4	5
C 07	1,825	923	818	-	2	-	818
C 08 ; 가 ;	1,596	713	698	-	1	10	708
C 09 ; ; ; 가 ; ; 가 ;	472	229	318	11	27	27	345
C 10 ,가 ; ; 가 ; ; ;	137	75	137	41	61	95	232
C 11 , , ; ; ; ;	114	43	24	17	48	43	67
C 12 ; ; ; ; ; ; ;	606	395	323	6	21	35	358
C 13	1	-	-	-	-	-	0
C 14 (skins) ; (hides) ; (pelts) ; (leather)	13	5	9	1	10	8	17
C 21	206	186	78	67	129	95	173
C 22 ; ;	245	124	117	5	7	4	121

( : )

Classification	Patents			Utility Models			''01 Total
	'99	'00	'01	'99	'00	'01	
C 23 ; ; ;	285	171	298	23	75	44	342
C 25 ;	88	38	99	27	54	65	164
C 30	61	32	27	1	3	-	27
D 01 ;	234	86	107	39	55	37	144
D 02 ;	99	19	53	18	34	37	90
D 03	43	58	31	43	107	87	118
D 04 , , ,	120	61	53	46	90	77	130
D 05 ; , (tufting)	28	11	22	35	35	82	104
D 06 ; ; 가	896	331	320	832	389	364	684
D 07 ;	4	27	14	4	13	18	32
D 21 ; (Cellulose)	146	69	94	26	41	41	135
E 01 ,	143	82	77	311	688	1,128	1,205

( : )

Classification	Patents			Utility Models			'01 Total
	'99	'00	'01	'99	'00	'01	
E 02 , ;	289	116	151	268	559	921	1,072
E 03 ;	56	35	46	248	536	535	581
E 04	335	182	146	743	1,360	1,417	1,563
E 05 ; ; ;	331	98	95	605	583	589	684
E 06 , ,	72	31	30	276	416	436	466
E 21 ;	47	38	68	48	90	91	159
F 01 , ;	548	221	228	472	212	194	422
F 02 , 가	942	514	735	549	319	236	971
F 03 ,	9	6	16	12	46	45	61
F 04 ;	704	305	571	427	356	327	898
F 15 ;	84	27	56	47	39	20	76
F 16 ;	1,719	1,042	1,011	1,644	1,689	1,546	2,557
F 17 가	48	23	24	70	80	85	109
F 21	47	24	20	168	349	494	514

( : )

Classification	Patents			Utility Models			'01 Total
	'99	'00	'01	'99	'00	'01	
F 22	26	10	18	23	18	28	46
F 23 ;	355	89	116	278	275	220	336
F 24 가 ; ;	966	565	564	974	1,259	1,169	1,733
F 25 ; ; ;	875	205	331	706	389	518	849
F 26	21	14	12	21	51	44	56
F 27 (furnace), (kiln) 가 (oven) (Retort)	52	13	36	26	60	74	110
F 28	166	60	70	159	120	151	221
F 41	34	22	18	41	67	77	95
F 42 ,	25	13	19	21	27	33	52
G 01 ;	1,866	724	944	670	657	678	1,622
G 02	1,313	1,162	1,165	229	306	468	1,633
G 03 , , ;	901	374	377	262	171	151	528
G 04	36	12	22	64	98	132	154
G 05 ;	179	65	163	55	51	62	225
G 06 ;	2,146	1,349	1,620	334	847	869	2,489
G 07	218	140	124	237	262	320	444

( : )

Classification	Patents			Utility Models			''01 Total
	'99	'00	'01	'99	'00	'01	
G 08	173	105	101	69	228	225	326
G 09 ; ; ;	510	347	360	396	835	844	1,204
G 10 ;	138	113	121	73	114	90	211
G 11	4,597	2,793	1,854	767	429	261	2,115
G 12	8	3	7	3	14	1	8
G 21 ;	66	96	80	12	29	35	115
H 01	9,579	6,731	5,539	2,839	2,397	1,886	7,425
H 02 ,	865	521	576	696	633	721	1,297
H 03	1,248	633	766	125	97	94	860
H 04	8,519	5,069	4,337	1,364	1,891	1,700	6,037
H 05	594	556	518	408	545	546	1,064
	-	-	-	1	-	1	1
Total	62,635	34,956	34,675	32,868	41,745	43,842	78,517

## 4.

## (Design Registrations by Articles)

Classification	( : )					
	'96	'97	'98	'99	'00	'01
	25	30	100	67	54	97
A. Foodstuffs, Including Dietetic Foods	(0.1)	(0.1)	(0.4)	(0.3)	(0.3)	(0.5)
	1,186	1,281	1,427	1,581	1,624	1,900
B. Articles of Clothing and Personal Belongings	(5.9)	(5.2)	(5.7)	(8.1)	(8.6)	(10.1)
	2,536	2,069	2,566	2,274	2,603	2,725
C. Household Goods, Furnishing	(12.6)	(8.4)	(10.3)	(11.6)	(13.9)	(14.7)
	2,515	2,477	2,456	1,980	2,243	2,294
D. Housing Apparatus	(12.5)	(10.0)	(9.9)	(10.1)	(11.9)	(12.3)
	713	529	701	546	542	547
E. Games, Toys and Sports Goods	(3.5)	(2.1)	(2.8)	(2.8)	(2.9)	(2.9)
	1,771	2,787	2,913	2,300	2,188	2,514
F. Stationer's Goods, Desk Equipment and Office Machinery	(8.8)	(11.3)	(11.7)	(11.7)	(11.6)	(13.5)
	1,870	3,945	2,733	1,029	1,155	844
G. Vehicles	(9.3)	(16.0)	(11.0)	(5.2)	(6.1)	(4.5)
	2,806	4,070	4,384	2,671	2,248	2,043
H. Electrical and Electronic Equipment	(13.9)	(16.5)	(17.6)	(13.6)	(11.9)	(11.0)
	917	1,483	1,187	1,054	970	811
J. General Machinery, not elsewhere specified	(4.5)	(6.0)	(4.8)	(5.4)	(5.1)	(4.3)
	1,853	2,348	2,382	1,812	1,390	1,376
K. Industrial Machinery	(9.2)	(9.5)	(9.6)	(9.2)	(7.4)	(7.4)
	2,493	2,059	2,289	2,319	1,924	1,971
L. Building Units and Construction Elements	(12.3)	(8.4)	(9.2)	(11.8)	(10.2)	(10.6)
	1,507	1,555	1,793	2,003	1,904	1,528
M. Basic Industrial Products, not elsewhere specified	(7.5)	(6.3)	(7.2)	(10.2)	(10.1)	(8.2)
	-	-	-	-	-	-
N. Not elsewhere specified						
	20,192	24,633	24,931	19,636	18,845	18,650
Total	(100)	(100)	(100)	(100)	(100)	(100)

: 1. ( )

(%)



5.  
(Design Registrations by kind of Articles)

( : )

Classification	'99			'00			'01		
	Kore - ans	Forei - gners	Total	Kore - ans	Forei - gners	Total	Kore - ans	Forei - gners	Total
A1	64	3	67	52	2	54	92	5	97
B1	122	13	135	251	15	266	286	11	297
B2	112	9	121	94	2	96	137	6	143
B3	407	35	442	470	41	511	559	25	584
B4 가	68	17	85	68	23	91	69	6	75
B5	205	8	213	76	5	81	87	21	108
B6	53	2	55	97	4	101	45	3	48
B7	397	34	431	339	40	379	452	66	518
B9	76	23	99	81	18	99	110	17	127
C0	16	1	17	6	-	6	32	1	33
C1 , ,	232	3	235	251	-	251	453	4	457
C2	238	5	243	213	-	213	187	17	204
C3 ,	287	33	320	287	23	310	251	41	292
C4 가	188	42	230	227	51	278	167	53	220
C5	553	52	605	790	63	853	671	75	746
C6	447	37	484	492	44	536	607	37	644
C7	140	-	140	156	-	156	129	-	129

( : )

Classification	'99			'00			'01		
	Kore - ans	Forei - gners	Total	Kore - ans	Forei - gners	Total	Kore - ans	Forei - gners	Total
D0	15	-	15	17	-	17	20	-	20
D1	136	-	136	149	2	151	143	3	146
D2 가	864	9	873	1043	19	1,062	994	27	1,021
D3	553	9	562	640	14	654	680	21	701
D4 .	225	17	242	234	16	250	246	17	263
D5	144	8	152	98	11	109	139	4	143
E0	36	-	36	25	-	25	15	-	15
E1	102	12	114	135	12	147	133	14	147
E2	168	59	227	207	19	226	142	31	173
E3	122	24	146	101	9	110	163	21	184
E4	21	2	23	32	2	34	28	-	28
F0	1	-	1	2	-	2	2	-	2
F1 ,	48	1	49	14	-	14	32	-	32
F2 ,	275	50	325	209	24	233	143	51	194
F3	203	1	204	271	3	274	299	24	323

( : )

Classification	'99			'00			'01		
	Kore - ans	Forei - gners	Total	Kore - ans	Forei - gners	Total	Kore - ans	Forei - gners	Total
F4 ,	1,310	67	1,377	1,267	54	1,321	1,531	56	1,587
F5 ,	336	8	344	337	7	344	373	3	376
G1 ,	173	15	188	137	3	140	108	3	111
G2	769	62	831	933	46	979	675	50	725
G3	6	1	7	34	2	36	8	-	8
G4	3	-	3	-	-	-	-	-	-
H0	26	-	26	27	-	27	5	-	5
H1	585	51	636	372	43	415	334	74	408
H2 ,	378	40	418	389	34	423	318	32	350
H3	488	69	557	532	54	586	432	51	483
H4	614	147	761	533	76	609	438	80	518
H5	216	57	273	160	28	188	236	43	279
J0	10	-	10	6	1	7	3	-	3

( : )

Classification	'99			'00			'01		
	Kore - ans	Forei - gnerns	Total	Kore - ans	Forei - gnerns	Total	Kore - ans	Forei - gnerns	Total
J1 ,	127	42	169	85	31	116	73	9	82
J2	141	84	225	156	97	253	147	53	200
J3	48	13	61	29	12	41	28	14	42
J4	17	12	29	17	13	30	15	11	26
J5	42	10	52	63	5	68	44	3	47
J6	172	2	174	117	-	117	107	3	110
J7	294	40	334	317	21	338	275	26	301
K0	117	17	134	81	1	82	86	7	93
K1	180	21	201	171	10	181	151	10	161
K2	124	22	146	108	-	108	89	3	92
K3 ,	399	8	407	272	7	279	274	9	283
K4 가	152	2	154	149	1	150	85	-	85
K5	90	8	98	52	6	58	64	12	76
K6	138	7	145	165	9	174	188	6	194

( : )

Classification	'99			'00			'01		
	Kore - ans	Forei - gnerns	Total	Kore - ans	Forei - gnerns	Total	Kore - ans	Forei - gnerns	Total
K7 가 , 가	112	7	119	85	3	88	78	5	83
K8 , ,	214	20	234	173	6	179	190	8	198
K9 ,	125	49	174	70	21	91	95	16	111
L0	2	-	2	-	-	-	-	-	-
L1 가	94	-	94	79	-	79	50	-	50
L2	720	6	726	347	5	352	349	1	350
L3 가 ,	595	-	595	538	1	539	598	-	598
L4	207	10	217	202	1	203	163	-	163
L5	559	10	569	546	5	551	596	10	606
L6	114	2	116	200	-	200	202	2	204
M0	-	-	-	4	-	4	2	-	2
M1 , ,	1,414	12	1,426	1357	21	1,378	1,069	16	1,085
M2 , ,	430	31	461	413	18	431	297	53	350
M3 , ,	108	8	116	78	13	91	84	7	91
N0									
Total	18,167	1,469	19,636	17,728	1,117	18,845	17,373	1,277	18,650

## 6.

## (Trademark Registrations by Industries)

가.

(단위: )

Classification	'96		'97		'98		'99		'00		'01	
	Number	(%)	Number	(%)	Number	(%)	Number	(%)	Number	(%)	Number	(%)
Multi& Communication	-	-	-	-	-	-	1,204	9.5	41	9.3	2	2.5
Machinery	1,521	5.7	4,440	10.5	5,448	9.1	1,027	8.1	28	6.3	8	9.9
Fibers	1,766	6.7	3,844	9.0	5,520	9.3	968	7.6	54	12.2	10	12.3
Chemicals	4,749	17.9	6,692	15.8	8,160	13.7	1,172	9.3	62	14.0	1	1.2
Pharmaceuticals & Sanitary	2,250	8.5	3,425	8.1	4,336	7.3	741	5.9	5	1.1	2	2.5
Food	4,768	18.0	5,598	13.2	8,041	13.5	1,627	12.9	49	11.1	3	3.7
Miscellaneous Goods	5,755	21.7	9,326	22.0	11,736	19.7	2,809	22.2	90	20.4	47	58.0
Others	1,561	5.9	3,122	7.3	4,379	7.3	-	-	4	0.9	-	-
Service Marks	4,094	15.5	6,037	14.2	11,991	20.1	3,109	24.6	109	24.7	8	9.9
Total	26,464	100	42,484	100	59,611	100	12,657	100	442	100	81	100

. NICE ( ) : 1999

( : )

Classification	'01					
	( )	( )	( )	( )	Total	( )
, ,	2,847	3,106	1,392	1,579	4,239	4,685
, ' ,	791	949	288	395	1,079	1,344
' , '	4,171	4,733	1,791	2,289	5,962	7,022
, ,	3,313	4,063	568	850	3,881	4,913
가 , ,	1,123	1,657	254	448	1,377	2,105
가 ' ' '	1,025	1,443	308	504	1,333	1,947
' ' ,	747	1,166	292	492	1,039	1,658
' , '	1,901	2,327	375	586	2,276	2,913
, ,	4,127	4,984	633	859	4,760	5,843
, 가	118	154	61	125	179	279
	6,639	9,807	827	1,990	7,466	11,797
	9	43	2	9	11	52
	26,811	34,432	6,791	10,126	33,602	44,558

7. (Trademark & Servicemarks  
Registrations by kind of Goods and Services)

가.

( : )

Classification	'99			'00			'01		
	Kore - ans	Forei - gners	Total	Kore - ans	Forei - gners	Total	Kore - ans	Forei - gners	Total
1.	19	6	25	-	-	-	-	1	1
2. 가	338	54	392	8	4	12	-	-	-
3.	358	94	452	9	4	13	2	-	2
4.	73	17	90	1	-	1	-	-	-
5.	250	63	313	1	11	12	-	-	-
6.	77	53	130	-	1	1	-	-	-
7. 가	110	22	132	7	1	8	1	-	1
8. 가	100	18	118	3	3	6	-	-	-
9.	16	48	64	1	-	1	1	1	2
10.	319	244	563	2	2	4	1	-	1
11.	68	110	178	1	-	1	1	-	1
12. ,	150	159	309	13	5	18	-	-	-
13.	90	92	182	1	6	7	-	-	-

) 1 53  
101 112



( : )

Classification	'99			'00			'01		
	Kore - ans	Forei - gners	Total	Kore - ans	Forei - gners	Total	Kore - ans	Forei - gners	Total
14. ,	23	9	32	2	-	2	-	-	-
15. , ,	73	41	114	1	-	1	-	-	-
16.	4	2	6	1	-	1	1	-	1
17.	8	6	14	-	-	-	-	-	-
18.	228	78	306	5	-	5	1	1	2
19.	2	3	5	-	-	-	-	-	-
20. ,	4	4	8	1	-	1	1	-	1
21.	52	56	108	9	1	10	-	-	-
22.	126	95	221	4	-	4	-	1	1
23.	7	7	14	-	1	1	-	-	-
24. , ,	43	55	98	1	3	4	-	-	-
25.	321	170	491	10	10	20	3	1	4
26. 가	279	105	384	4	-	4	-	-	-
27. , , ,	161	97	258	10	10	20	-	-	-

( : )

Classification	'99			'00			'01		
	Kore-ans	Forei-gners	Total	Kore-ans	Forei-gners	Total	Kore-ans	Forei-gners	Total
28. ,	52	27	79	-	-	-	-	-	-
29.	7	7	14	-	-	-	2	-	2
30. , ,	54	33	87	4	-	4	18	-	18
31. ,	47	50	97	2	-	2	2	-	2
32.	16	31	47	1	-	1	1	-	1
33. 가	65	42	107	1	1	2	-	-	-
34. , , ,	58	98	156	-	1	1	-	-	-
35.	92	68	160	8	1	9	6	1	7
36.	68	38	106	2	1	3	-	-	-
37.	158	99	257	4	7	11	-	-	-
38. , ,	104	133	237	-	2	2	-	1	1
39. , , ,	689	515	1,204	16	25	41	1	1	2
40. ,	18	11	29	-	1	1	-	-	-

) 1 53  
101 112

( : )

Classification	'99			'00			'01		
	Kore - ans	Forei - gners	Total	Kore - ans	Forei - gners	Total	Kore - ans	Forei - gners	Total
41.	11	10	21	-	-	-	-	-	-
42. , , , ,	2	1	3	4	1	5	3	-	3
43. , ,	188	104	292	8	7	15	2	7	9
44. ,	28	18	46	4	1	5	-	-	-
45. ,	598	273	871	22	27	49	8	2	10
46.	3	-	3	-	-	-	-	-	-
47.	12	3	15	-	-	-	-	-	-
48.	17	1	18	-	1	1	-	-	-
49.	45	19	64	1	3	4	-	-	-
50.	8	8	16	-	-	-	-	-	-
51. ,	15	7	22	-	3	3	-	-	-
52.	401	143	544	12	5	17		1	1
53.	6	4	10	-	-	-	-	-	-

( : )

Classification	'99			'00			'01		
	Kore - ans	Forei - gners	Total	Kore - ans	Forei - gners	Total	Kore - ans	Forei - gners	Total
101. Advertisement	77	32	109	5	2	7	-	-	-
102. Finance	34	61	95	-	3	3	-	-	-
103. Insurance	15	20	35	-	-	-	-	-	-
104. Civil Engineering & Construction	78	23	101	-	1	1	-	-	-
105. Repairing	42	45	87	-	1	1	-	-	-
106. Communication	226	61	287	8	1	9	-	-	-
107. Broadcasting	54	13	67	6	1	7	-	-	-
108. Transportation	41	20	61	2	2	4	-	-	-
109. Warehouse	25	18	43	1	-	1	-	-	-
110. 가 Special Processing	33	17	50	1	-	1	-	-	-
111. Entertainment	40	53	93	-	4	4	-	-	-
112. Other	1,727	390	2,117	52	19	71	6	2	8
Total	8,453	4,204	12,657	259	183	442	61	20	81

) 1 53  
101 112

7. (Trademark & Servicemarks  
Registrations by kind of Goods and Services)

가.

( : )

Classification	'99			'00			'01		
	Kore - ans	Forei - gners	Total	Kore - ans	Forei - gners	Total	Kore - ans	Forei - gners	Total
1.	19	6	25	-	-	-	-	1	1
2. 가	338	54	392	8	4	12	-	-	-
3.	358	94	452	9	4	13	2	-	2
4.	73	17	90	1	-	1	-	-	-
5.	250	63	313	1	11	12	-	-	-
6.	77	53	130	-	1	1	-	-	-
7. 가	110	22	132	7	1	8	1	-	1
8. 가	100	18	118	3	3	6	-	-	-
9.	16	48	64	1	-	1	1	1	2
10.	319	244	563	2	2	4	1	-	1
11.	68	110	178	1	-	1	1	-	1
12. ,	150	159	309	13	5	18	-	-	-
13.	90	92	182	1	6	7	-	-	-

) 1 53  
101 112

( : )

Classification	'99			'00			'01		
	Kore - ans	Forei - gners	Total	Kore - ans	Forei - gners	Total	Kore - ans	Forei - gners	Total
14. ,	23	9	32	2	-	2	-	-	-
15. , ,	73	41	114	1	-	1	-	-	-
16.	4	2	6	1	-	1	1	-	1
17.	8	6	14	-	-	-	-	-	-
18.	228	78	306	5	-	5	1	1	2
19.	2	3	5	-	-	-	-	-	-
20. ,	4	4	8	1	-	1	1	-	1
21.	52	56	108	9	1	10	-	-	-
22.	126	95	221	4	-	4	-	1	1
23.	7	7	14	-	1	1	-	-	-
24. , ,	43	55	98	1	3	4	-	-	-
25.	321	170	491	10	10	20	3	1	4
26. 가	279	105	384	4	-	4	-	-	-
27. , , ,	161	97	258	10	10	20	-	-	-

( : )

Classification	'99			'00			'01		
	Kore-ans	Forei-gners	Total	Kore-ans	Forei-gners	Total	Kore-ans	Forei-gners	Total
28. ,	52	27	79	-	-	-	-	-	-
29.	7	7	14	-	-	-	2	-	2
30. , ,	54	33	87	4	-	4	18	-	18
31. ,	47	50	97	2	-	2	2	-	2
32.	16	31	47	1	-	1	1	-	1
33. 가	65	42	107	1	1	2	-	-	-
34. , , ,	58	98	156	-	1	1	-	-	-
35.	92	68	160	8	1	9	6	1	7
36.	68	38	106	2	1	3	-	-	-
37.	158	99	257	4	7	11	-	-	-
38. , ,	104	133	237	-	2	2	-	1	1
39. , , ,	689	515	1,204	16	25	41	1	1	2
40. ,	18	11	29	-	1	1	-	-	-

) 1 53  
101 112

( : )

Classification	'99			'00			'01		
	Kore - ans	Forei - gners	Total	Kore - ans	Forei - gners	Total	Kore - ans	Forei - gners	Total
41.	11	10	21	-	-	-	-	-	-
42. , , , ,	2	1	3	4	1	5	3	-	3
43. , ,	188	104	292	8	7	15	2	7	9
44. ,	28	18	46	4	1	5	-	-	-
45. ,	598	273	871	22	27	49	8	2	10
46.	3	-	3	-	-	-	-	-	-
47.	12	3	15	-	-	-	-	-	-
48.	17	1	18	-	1	1	-	-	-
49.	45	19	64	1	3	4	-	-	-
50.	8	8	16	-	-	-	-	-	-
51. ,	15	7	22	-	3	3	-	-	-
52.	401	143	544	12	5	17		1	1
53.	6	4	10	-	-	-	-	-	-



( : )

Classification	'99			'00			'01		
	Kore - ans	Forei - gners	Total	Kore - ans	Forei - gners	Total	Kore - ans	Forei - gners	Total
101. Advertisement	77	32	109	5	2	7	-	-	-
102. Finance	34	61	95	-	3	3	-	-	-
103. Insurance	15	20	35	-	-	-	-	-	-
104. Civil Engineering & Construction	78	23	101	-	1	1	-	-	-
105. Repairing	42	45	87	-	1	1	-	-	-
106. Communication	226	61	287	8	1	9	-	-	-
107. Broadcasting	54	13	67	6	1	7	-	-	-
108. Transportation	41	20	61	2	2	4	-	-	-
109. Warehouse	25	18	43	1	-	1	-	-	-
110. 가 Special Processing	33	17	50	1	-	1	-	-	-
111. Entertainment	40	53	93	-	4	4	-	-	-
112. Other	1,727	390	2,117	52	19	71	6	2	8
Total	8,453	4,204	12,657	259	183	442	61	20	81

) 1 53  
101 112

. NICE ( )

( : )

Classification	'99			'00			'01		
	Kore - ans	Forei - gners	Total	Kore - ans	Forei - gners	Total	Kore - ans	Forei - gners	Total
1.	322	197	519	503	242	745	419	268	687
	(344)	(236)	(580)	(522)	(283)	(805)	(431)	(295)	(726)
2. 가	119	64	183	122	52	174	139	66	205
	(140)	(84)	(224)	(149)	(65)	(214)	(176)	(90)	(266)
3.	1,319	419	1,738	1,596	487	2,083	1,416	476	1,892
	(1,349)	(448)	(1,797)	(1,634)	(536)	(2,170)	(1,481)	(516)	(1,997)
4.	56	29	85	92	43	135	63	30	93
	(70)	(36)	(106)	(115)	(53)	(168)	(96)	(61)	(157)
5.	488	757	1,245	1,050	853	1,903	810	552	1,362
	(502)	(794)	(1,296)	(1,088)	(946)	(2,034)	(922)	(617)	(1,539)
6.	222	77	299	291	110	401	363	157	520
	(243)	(94)	(337)	(313)	(130)	(443)	(403)	(188)	(591)
7. 가	344	207	551	436	185	621	519	261	780
	(375)	(243)	(618)	(471)	(226)	(697)	(563)	(328)	(891)
8. 가	64	22	86	124	55	179	119	49	168
	(76)	(43)	(119)	(143)	(78)	(221)	(175)	(86)	(261)
9.	1,117	717	1,834	1,711	835	2,546	2,572	1,126	3,698
	(1,211)	(829)	(2,040)	(1,781)	(943)	(2,724)	(2,766)	(1,322)	(4,088)
10.	106	152	258	172	174	346	165	143	308
	(143)	(163)	(306)	(197)	(224)	(421)	(233)	(210)	(443)
11.	285	102	387	576	125	701	524	106	630
	(360)	(135)	(495)	(641)	(156)	(797)	(671)	(205)	(876)
12. ,	223	120	343	257	92	349	361	146	507
	(249)	(161)	(410)	(284)	(115)	(399)	(435)	(207)	(642)
13.	5	6	11	2	10	12	30	9	39
	(11)	(11)	(22)	(5)	(13)	(18)	(65)	(17)	(82)
14. ,	259	153	412	400	130	530	370	154	524
	(332)	(186)	(518)	(450)	(195)	(645)	(509)	(225)	(734)

) 1 34  
35 42  
( )

( : )

Classification	'99			'00			'01		
	Kore - ans	Forei - gners	Total	Kore - ans	Forei - gners	Total	Kore - ans	Forei - gners	Total
15. , ,	17 (26)	7 (7)	24 (33)	28 (33)	7 (9)	35 (42)	69 (94)	32 (41)	101 (135)
16.	1,060 (1,278)	260 (362)	1,320 (1,640)	1,168 (1,330)	168 (253)	1,336 (1,583)	1,901 (2,327)	375 (586)	2,276 (2,913)
17.	100 (128)	67 (89)	167 (217)	107 (132)	66 (92)	173 (224)	118 (154)	61 (125)	179 (279)
18.	441 (571)	87 (145)	528 (716)	547 (728)	115 (201)	662 (929)	655 (934)	154 (279)	809 (1,213)
19.	180 (213)	32 (41)	212 (254)	260 (290)	58 (70)	318 (360)	309 (371)	82 (121)	391 (492)
20. ,	203 (276)	56 (76)	259 (352)	380 (460)	54 (87)	434 (547)	463 (645)	99 (156)	562 (801)
21.	321 (410)	95 (132)	416 (542)	373 (485)	74 (125)	447 (610)	400 (583)	96 (190)	496 (773)
22.	37 (52)	12 (21)	49 (73)	50 (78)	15 (25)	65 (103)	53 (89)	23 (39)	76 (128)
23.	17 (25)	23 (26)	40 (51)	60 (69)	18 (25)	78 (94)	61 (82)	24 (35)	85 (117)
24. , ,	228 (304)	59 (91)	287 (395)	337 (441)	67 (111)	404 (552)	468 (644)	77 (134)	545 (778)
25.	1,334 (1,591)	271 (340)	1,605 (1,931)	2,385 (2,717)	341 (480)	2,726 (3,197)	2,731 (3,248)	444 (642)	3,175 (3,890)
26. 가	115 (183)	24 (35)	139 (218)	126 (177)	22 (41)	148 (218)	170 (278)	32 (61)	202 (339)
27. , , ,	29 (48)	12 (17)	41 (65)	39 (57)	14 (21)	53 (78)	90 (151)	27 (41)	117 (192)
28. ,	303 (429)	133 (193)	436 (622)	545 (722)	152 (225)	697 (947)	615 (951)	206 (384)	821 (1,335)
29.	622 (682)	100 (114)	722 (796)	783 (834)	117 (140)	900 (974)	1,237 (1,348)	112 (155)	1,349 (1,503)
30. , ,	989 (1,106)	182 (210)	1,171 (1,316)	1,390 (1,539)	135 (191)	1,525 (1,730)	1,863 (2,185)	193 (264)	2,056 (2,449)

) 1 34  
35 42

( )

( : )

Classification	'99			'00			'01		
	Kore - ans	Forei - gners	Total	Kore - ans	Forei - gners	Total	Kore - ans	Forei - gners	Total
31. ,	235 (315)	61 (75)	296 (390)	326 (381)	77 (112)	403 (493)	373 (507)	145 (180)	518 (687)
32. 가	175 (268)	72 (88)	247 (356)	421 (519)	85 (115)	506 (634)	414 (585)	63 (122)	477 (707)
33.	110 (148)	60 (62)	170 (210)	156 (190)	71 (82)	227 (272)	240 (359)	120 (138)	360 (497)
34. , ,	43 (57)	65 (74)	108 (131)	68 (84)	82 (88)	150 (172)	63 (121)	54 (67)	117 (188)
35.	708 (944)	127 (164)	835 (1,108)	1,318 (1,375)	181 (198)	1,499 (1,573)	1,731 (2,345)	198 (343)	1,929 (2,688)
36.	264 (381)	123 (156)	387 (537)	663 (726)	106 (127)	769 (853)	660 (946)	120 (225)	780 (1,171)
37.	209 (321)	49 (95)	258 (416)	375 (451)	53 (58)	428 (509)	373 (549)	49 (167)	422 (716)
38. ,	267 (417)	62 (101)	329 (518)	748 (822)	62 (78)	810 (900)	869 (1,339)	90 (227)	959 (1,566)
39. , ,	107 (164)	75 (101)	182 (265)	224 (261)	62 (80)	286 (341)	231 (383)	42 (109)	273 (492)
40. ,	102 (152)	28 (41)	130 (193)	138 (159)	16 (22)	154 (181)	112 (215)	23 (58)	135 (273)
41.	358 (513)	110 (158)	468 (671)	561 (640)	92 (118)	653 (758)	644 (1,096)	117 (293)	761 (1,389)
42. , , ,	1,374 (1,687)	200 (288)	1,574 (1,975)	1,896 (2,088)	206 (271)	2,102 (2,359)	1,884 (2,799)	187 (567)	2,071 (3,366)
43							144 (178)	3 (10)	147 (188)
	14,877 (18,094)	5,474 (6,765)	20,351 (24,859)	22,804 (25,581)	5,909 (7,408)	28,713 (32,989)	26,811 (34,432)	6,791 (10,126)	33,602 (44,558)

) 1 34  
35 42  
( )

8. (Registrations by Type of Marks)

( : )

Classification	Trade Marks	Service Marks	/ TM/SM	Corporate Logos	Collective Marks	Renewals	Total
'1980 before	14,014	1,030	-	7	-	2,575	17,626
'81	6,418	345	-	6	-	2,815	9,584
'82	7,464	323	-	5	1	2,604	10,397
'83	10,378	638	-	6	-	2,959	13,981
'84	10,919	747	-	8	-	4,378	16,052
'85	13,508	935	-	10	-	1,570	16,023
'86	14,023	1,054	-	8	1	953	16,039
'87	13,662	1,038	-	5	3	1,024	15,732
'88	16,030	1,222	-	19	1	1,935	19,207
'89	20,605	1,641	-	14	3	1,832	24,095
'90	21,336	2,410	-	28	16	1,072	24,862
'91	21,807	2,052	-	17	-	3,833	27,709
'92	27,048	3,237	-	11	2	2,694	32,992
'93	26,073	4,251	-	51	17	2,437	32,829
'94	22,578	2,791	-	31	9	3,193	28,602
'95	25,445	4,358	-	2	6	4,318	34,129
'96	22,370	4,019	-	62	13	12,772	39,236
'97	36,447	5,952	-	72	13	11,697	54,181
'98	47,597	11,896	-	94	24	5,988	65,599
'99	25,843	6,972	-	131	22	11,266	44,234
'00	22,337	6,818	1,513	169	12	11,696	42,545
'01	24,450	7,018	136	21	2,058	11,494	45,177
<b>Total</b>	<b>450,352</b>	<b>70,747</b>	<b>1,649</b>	<b>777</b>	<b>2,201</b>	<b>105,105</b>	<b>630,831</b>



## 10. .

## (Registrations by Koreans and Foreign Nationals)

( : , %)

Classifi - cation	Patents					Utility Models				
	Koreans		Foreig - ners		Sub Total	Koreans		Foreig - ners		Sub Total
1979 before	4,137	55.6	3,303	44.4	7,440	16,884	98.2	309	1.8	17,193
1980	186	11.4	1,446	88.6	1,632	1,315	75.0	438	25.0	1,753
1981	232	12.8	1,576	87.2	1,808	1,300	76.9	391	23.1	1,691
1982	274	10.5	2,335	89.5	2,609	1,961	78.0	553	22.0	2,514
1983	245	10.1	2,188	89.9	2,433	1,225	58.9	854	41.1	2,079
1984	297	12.6	2,068	87.4	2,365	1,817	77.0	543	23.0	2,360
1985	349	15.4	1,919	84.6	2,268	1,873	80.5	454	19.5	2,327
1986	458	24.2	1,436	75.8	1,894	2,318	84.0	440	16.0	2,758
1987	596	25.6	1,734	74.4	2,330	2,985	87.3	434	12.7	3,419
1988	575	26.4	1,599	73.6	2,174	2,719	87.5	389	12.5	3,108
1989	1,181	29.7	2,791	70.3	3,972	4,813	90.6	498	9.4	5,311
1990	2,554	32.9	5,208	67.1	7,762	7,896	89.3	950	10.7	8,846
1991	2,553	29.4	6,137	70.6	8,690	7,459	89.1	911	10.9	8,370
1992	3,570	34.0	6,932	66.0	10,502	7,092	90.1	778	9.9	7,870
1993	4,545	39.7	6,901	60.3	11,446	6,814	89.8	778	10.2	7,592
1994	5,774	49.4	5,909	50.6	11,683	7,279	93.1	538	6.9	7,817
1995	6,575	52.5	5,937	47.5	12,512	7,713	94.6	436	5.4	8,149
1996	8,321	50.4	8,195	49.6	16,516	8,749	95.2	442	4.8	9,191
1997	14,497	59.0	10,082	41.0	24,579	13,255	96.7	458	3.3	13,713
1998	35,900	67.9	17,000	32.1	52,900	25,164	97.8	553	2.2	25,717
1999	43,314	69.2	19,321	30.8	62,635	32,494	98.9	374	1.1	32,868
2000	22,943	65.6	12,013	34.4	34,956	41,350	99.1	395	0.9	41,745
2001	21,833	63.0	12,842	37.0	34,675	43,372	98.9	470	1.1	43,842
Total	180,909	56.6	138,872	43.4	319,781	247,847	95.2	12,386	4.8	260,233

( : , %)

Industrial Designs					Trademarks					Total				
Koreans		Foreign -ners		Sub Total	Koreans		Foreign -ners		Sub Total	Koreans		Foreign -ners		Sub Total
29,984	98.3	506	1,139.6	30,490	39,658	58.1	28,655	41.9	68,313	90,663	73.4	32,773	26.6	123,436
3,917	96.2	154	173.8	4,071	4,665	59.5	3,180	40.5	7,845	10,083	65.9	5,218	34.1	15,301
3,542	94.9	189	216.8	3,731	3,966	58.6	2,803	41.4	6,769	9,040	64.6	4,959	35.4	13,999
4,343	91.4	408	455.9	4,751	4,419	56.7	3,374	43.3	7,793	10,997	62.2	6,670	37.8	17,667
5,760	90.5	607	675.0	6,367	7,239	65.7	3,783	34.3	11,022	14,469	66.1	7,432	33.9	21,901
6,429	90.4	680	777.7	7,109	7,694	65.9	3,980	34.1	11,674	16,237	69.1	7,271	30.9	23,508
7,597	92.1	653	771.8	8,250	9,304	64.4	5,149	35.6	14,453	19,123	70.1	8,175	29.9	27,298
8,192	94.6	468	617.3	8,660	9,928	65.8	5,158	34.2	15,086	20,896	73.6	7,502	26.4	28,398
10,726	92.8	826	1,109.9	11,552	9,862	67.1	4,846	32.9	14,708	24,169	75.5	7,840	24.5	32,009
9,601	91.4	901	1,225.0	10,502	11,566	67.0	5,706	33.0	17,272	24,461	74.0	8,595	26.0	33,056
11,243	89.5	1,318	1,875.7	12,561	14,573	65.5	7,690	34.5	22,263	31,810	72.1	12,297	27.9	44,107
12,368	88.8	1,559	2,323.5	13,927	15,469	65.0	8,321	35.0	23,790	38,287	70.5	16,038	29.5	54,325
12,319	89.8	1,404	1,988.1	13,723	15,882	66.5	7,994	33.5	23,876	38,213	69.9	16,446	30.1	54,659
12,476	91.5	1,159	1,755.9	13,635	21,274	70.2	9,024	29.8	30,298	44,412	71.3	17,893	28.7	62,305
12,079	92.0	1,054	1,748.2	13,133	21,109	69.5	9,283	30.5	30,392	44,547	71.2	18,016	28.8	62,563
12,808	93.5	887	1,753.7	13,695	18,482	72.7	6,927	27.3	25,409	44,343	75.7	14,261	24.3	58,604
15,867	93.4	1,119	2,358.2	16,986	22,294	74.8	7,517	25.2	29,811	52,449	77.8	15,009	22.2	67,458
18,683	92.5	1,509	3,041.2	20,192	19,729	74.6	6,735	25.4	26,464	55,482	76.7	16,881	23.3	72,363
22,865	92.8	1,768	4,310.2	24,633	30,880	72.7	11,604	27.3	42,484	81,497	77.3	23,912	22.7	105,409
22,700	91.1	2,231	6,942.3	24,931	41,637	69.8	17,974	30.2	59,611	125,401	76.9	37,758	23.1	163,159
18,167	92.5	1,469	4,762.2	19,636	23,290	70.6	9,678	29.4	32,968	117,265	79.2	30,842	20.8	148,107
17,728	94.1	1,117	3,250.3	18,845	24,342	78.9	6,507	21.1	30,849	106,363	84.2	20,032	15.8	126,395
17,373	93.2	1,277	3,448.1	18,650	26,872	79.8	6,811	20.2	33,683	109,450	83.6	21,400	16.4	130,850
296,767	92.7	23,263	7.3	320,030	404,134	68.9	182,699	31.1	586,833	1,129,657	76.0	357,220	24.0	1,486,877



11. (Registrations by Cities or Provinces)

가. (Patents)

( : )

Classification	Seoul	Busan	Daegu	Incheon	Gwangju	Daejeon	Ulsan	Gyeonggi	Gangwon
1983 before	3,437	261	4	3				296	41
1984	192	17	13	9				38	1
1985	194	21	14	11				35	
1986	305	22	8	13				45	1
1987	368	17	16	21	1			89	
1988	325	16	14	30	3			106	1
1989	628	28	26	39	2	6		282	9
1990	1,178	52	37	66	6	57		844	3
1991	1,058	39	25	58		49		979	6
1992	1,480	31	60	51	10	127		1,448	7
1993	1,700	34	71	79	11	332		1,666	7
1994	2,111	41	84	118	12	370		2,271	9
1995	2,880	55	100	199	13	389		2,182	13
1996	3,923	82	145	391	14	639		2,001	24
1997	7,135	130	170	1,068	35	1,087		3,336	31
1998	14,106	262	326	3,814	124	1,600		12,180	71
1999	17,607	354	336	2,440	487	1,439	117	15,590	102
2000	8,620	235	225	940	247	1,069	74	8,146	60
2001	8,241	330	334	925	265	1,036	98	7,735	81
Total	75,488	2,027	2,008	10,275	1,230	8,200	289	59,269	467

(Utility Models)

( : )

Classification	Seoul	Busan	Daegu	Incheon	Gwangju	Daejeon	Ulsan	Gyeonggi	Gangwon
1983 before	13,809	1,784	63	46				1,506	204
1984	1,007	160	92	60				264	17
1985	1,082	147	95	59				263	14
1986	1,326	134	154	86				358	12
1987	1,730	151	150	173	5			454	9
1988	1,305	155	155	144	3			686	6
1989	2,589	195	231	260	2	9		1,113	17
1990	4,025	347	340	331	36	45		2,115	24
1991	3,087	299	322	255	35	22		2,724	42
1992	3,180	266	303	231	33	38		2,382	35
1993	3,126	190	288	205	54	50		2,102	32
1994	3,532	214	281	211	55	49		1,945	18
1995	3,718	252	323	395	47	56		1,701	24
1996	4,002	339	376	776	59	81		1,580	34
1997	6,050	391	431	1,619	63	104		2,747	37
1998	10,332	563	582	3,852	183	149	3	6,354	54
1999	13,609	1,076	1,084	3,000	831	547	167	7,552	116
2000	15,249	2,314	2,084	2,584	764	1,001	384	9,740	321
2001	14,897	2,314	2,394	2,898	934	1,174	364	11,142	490
Total	107,655	11,291	9,748	17,185	3,104	3,325	918	56,728	1,506

( : )

Chungbuk	Chungnam	Jeonbuk	Jeonnam	Gyeongbuk	Gyeongnam	Jeju	Korean resident abroad		Total
32	170	49	96	281	339	17	48		5,074
1	8	1		7	9		1		297
2	22	1	10	18	19	2			349
3	9	4	6	28	10	3	1		458
5	26	5	4	23	13		8		596
1	21	2	4	39	6		7		575
3	32	7	13	75	21		10		1,181
24	58	16	10	111	80	1	11		2,554
13	97	12	12	110	86	2	7		2,553
26	60	15	9	154	83	3	6		3,570
300	57	10	8	172	93	3	2		4,545
341	27	27	16	231	112	4			5,774
213	31	18	12	304	159	4	3		6,575
308	41	25	23	462	234	4	5		8,321
446	67	48	30	532	371	7	4		14,497
1,520	142	82	57	865	718	18	12	3	35,900
2,215	278	92	91	1,292	799	27	20	28	43,314
1,627	241	82	47	789	504	20	8	9	22,943
953	408	117	106	789	368	39		8	21,833
8,033	1,795	613	554	6,282	4,024	154	153	48	180,909

( : )

Chungbuk	Chungnam	Jeonbuk	Jeonnam	Gyeongbuk	Gyeongnam	Jeju	Korean resident abroad		Total
253	800	459	569	1,923	1,108	42	67		22,633
15	47	22	32	54	46	1			1,817
16	51	23	38	31	45	5	4		1,873
13	55	20	47	55	55	3			2,318
20	96	23	40	59	64	10	1		2,985
18	55	27	18	48	87	1	11		2,719
26	81	48	44	76	111	4	7		4,813
65	69	53	29	128	271	5	13		7,896
54	100	63	23	124	290	6	13		7,459
53	76	51	20	160	249	6	9		7,092
226	49	61	27	175	210	8	11		6,814
371	31	49	29	260	218	9	7		7,279
246	46	46	29	495	316	10	9		7,713
308	44	65	43	598	424	15	5		8,749
367	95	86	53	769	432	10	1		13,255
717	175	122	86	1,133	838	16	5		25,164
964	400	227	210	1,532	1,109	40	9	21	32,494
1,266	873	575	526	2,206	1,319	110	18	16	41,350
902	1,134	668	530	1,884	1,524	113	1	9	43,372
5,900	4,277	2,688	2,393	11,710	8,716	414	191	46	247,795

## (Industrial Designs)

( : )

Classification	Seoul	Busan	Daegu	Incheon	Gwangju	Daejeon	Ulsan	Gyeonggi	Gangwon
1983 before	29,457	6,621	355	186				3,330	177
1984	3,891	671	460	210				655	20
1985	4,473	737	507	324				1,001	24
1986	4,798	675	555	280				1,343	17
1987	6,431	793	681	388	3			1,604	33
1988	5,577	575	665	420	30			1,637	17
1989	6,748	492	610	390	46	4		2,204	32
1990	7,064	651	801	462	56	7		2,499	25
1991	7,046	594	818	467	89	79		2,447	37
1992	7,178	546	816	504	113	111		2,402	40
1993	6,517	585	730	616	131	122		2,494	55
1994	6,910	667	751	574	110	139		2,433	43
1995	8,257	925	806	984	127	165		3,071	65
1996	9,343	886	932	1,846	267	222		3,738	113
1997	11,164	889	1,044	3,622	208	262		4,123	90
1998	10,604	1,175	1,087	2,285	187	253	9	5,166	123
1999	8,013	884	1,091	1,369	150	233	38	4,453	136
2000	7,904	811	912	1,083	187	261	58	4,758	130
2001	7,568	656	773	1,221	226	224	58	4,890	88
Total	158,943	19,833	14,394	17,231	1,930	2,082	163	54,248	1,265

## (Trademarks)

( : )

Classification	Seoul	Busan	Daegu	Incheon	Gwangju	Daejeon	Ulsan	Gyeonggi	Gangwon
1983 before	41,006	4,283	252	180				5,204	308
1984	5,585	476	188	161				742	15
1985	6,576	499	234	323				1,160	16
1986	6,940	442	272	308				1,268	28
1987	6,127	539	307	337	1			1,800	25
1988	7,983	544	292	361	19			1,577	22
1989	10,193	559	373	402	68	20		2,045	40
1990	10,886	769	419	465	47	14		2,088	36
1991	11,342	664	378	484	35	48		2,014	30
1992	14,202	780	536	1,060	204	162		3,053	72
1993	14,873	688	596	731	73	211		2,644	107
1994	12,407	663	485	759	80	210		2,446	99
1995	15,465	846	479	836	101	234		2,585	107
1996	13,898	661	456	721	122	247		2,094	171
1997	20,405	1,460	718	1,315	216	359		4,233	255
1998	26,653	1,625	889	1,973	227	556	35	6,289	438
1999	13,967	984	566	859	218	372	32	3,779	458
2000	14,742	1,041	708	811	239	384	60	3,859	281
2001	16,603	1,015	520	902	232	513	101	4,262	377
Total	269,853	18,538	8,668	12,988	1,882	3,330	228	53,142	2,885

( : )

Chungbuk	Chungnam	Jeonbuk	Jeonnam	Gyeongbuk	Gyeongnam	Jeju	Korean residentabroad		Total
193	926	345	568	3,514	1,861	54	79		47,666
55	103	59	74	84	130	13	4		6,429
45	132	50	64	98	125	17			7,597
30	119	29	56	111	156	20	3		8,192
82	190	70	68	139	219	16	9		10,726
89	127	55	36	167	189	9	8		9,601
118	140	61	35	95	217	19	32		11,243
122	169	70	53	137	221	20	11		12,368
72	109	82	51	195	218	6	9		12,319
86	65	74	44	198	252	40	7		12,476
91	107	74	50	222	246	36	3		12,079
132	136	153	47	367	320	23	3		12,808
279	187	124	84	405	326	61	1		15,867
257	188	106	106	295	347	30	7		18,683
252	247	149	112	299	354	32	18		22,865
303	301	185	122	384	462	31	23		22,700
390	330	227	111	355	323	38	13	13	18,167
281	310	223	119	318	332	31	5	5	17,728
237	407	238	157	279	308	43	0		17,373
3,114	4,293	2,374	1,957	7,662	6,606	539	235	18	296,887

( : )

Chungbuk	Chungnam	Jeonbuk	Jeonnam	Gyeongbuk	Gyeongnam	Jeju	Korean residentabroad		Total
166	955	935	738	3,115	2,742	45	14		59,943
9	82	33	94	106	202	1			7,694
18	110	56	73	71	157	4	7		9,304
48	138	25	68	145	237	7	2		9,928
44	224	32	30	99	288	2	7		9,862
62	205	63	33	145	245	7	8		11,566
198	175	68	25	153	223	14	17		14,573
117	139	63	28	102	281	2	13		15,469
117	157	181	45	110	245	14	18		15,882
235	177	178	46	238	297	12	22		21,274
181	175	158	70	222	332	32	16		21,109
276	192	273	44	213	287	33	15		18,482
368	300	155	55	355	385	22	1		22,294
329	201	148	85	251	303	34	8		19,729
395	321	214	129	316	457	74	13		30,880
490	517	395	194	553	642	111	46		41,633
317	452	231	191	378	379	75	18	14	23,290
449	423	271	189	425	373	72	12	3	24,342
392	453	365	203	360	513	60	0	1	26,872
4,211	5,396	3,844	2,340	7,357	8,588	621	237	18	404,126

12.

## (Registrations by Foreign Nationals)

( : )

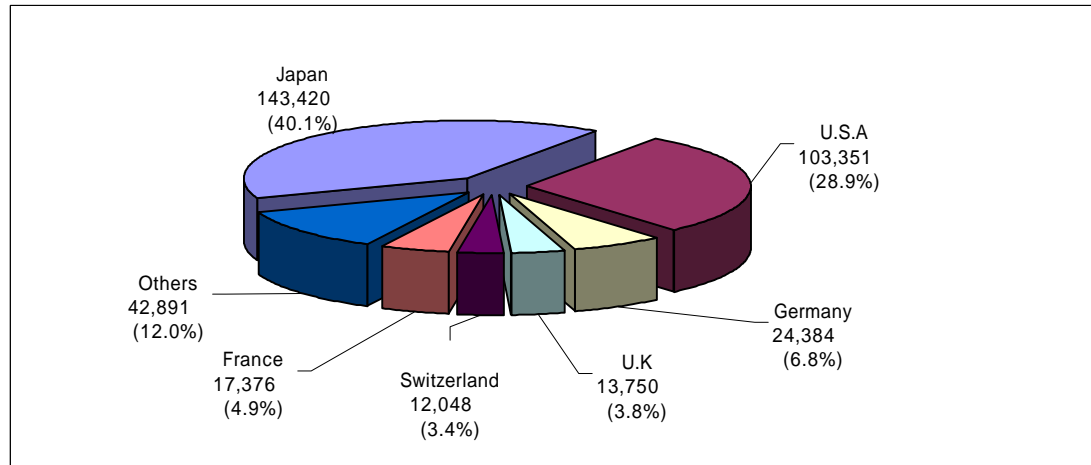
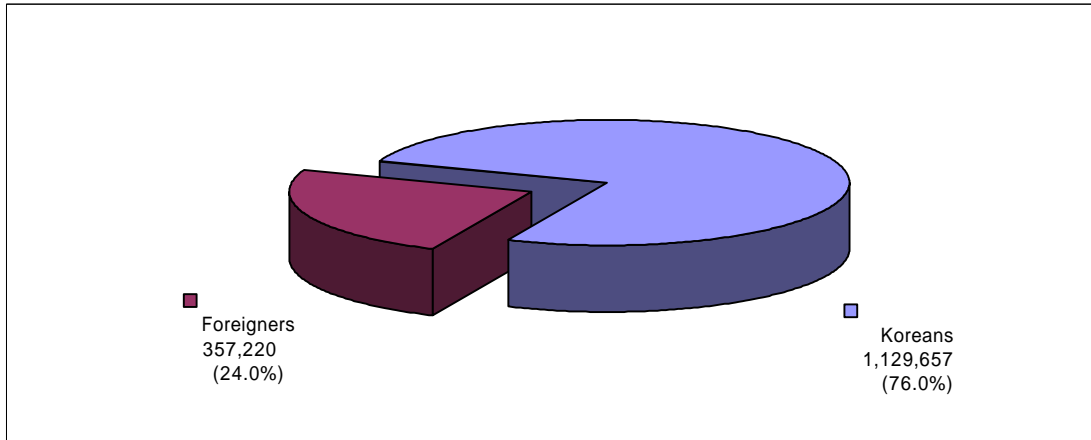
Classification	Patents			Utility Models		
	'99	'00	'01	'99	'00	'01
U.S.A	5,027	3,138	3,315	58	58	82
U.K	388	179	197	-	2	3
Germany	1,217	691	846	7	8	7
France	584	284	389	1	-	1
Canada	94	42	71	-	3	3
Switzerland	325	184	235	-	-	-
Australia	72	31	68	-	-	1
Italy	196	94	98	-	4	2
Netherlands	416	230	239	5	2	2
Hong Kong	6	4	9	1	-	2
R.O.China	37	44	65	88	193	269
Sweden	138	120	181	-	1	1
Japan	10,230	6,698	6,814	166	114	76
Other	591	274	315	48	10	21
Total	19,321	12,013	12,842	374	395	470

( : )

Industrial Designs			Trademarks			Total		
'99	'00	'01	'99	'00	'01	'99	'00	'01
352	275	295	3,751	2,468	2,520	9,188	5,939	6,212
30	27	15	530	278	314	948	486	529
65	48	62	788	559	492	2,077	1,306	1,407
35	47	56	601	496	383	1,221	827	829
5	3	5	92	72	47	191	120	126
50	58	37	506	413	451	881	655	723
3	2	37	99	52	91	174	85	197
13	16	26	369	189	167	578	303	293
50	45	52	268	129	161	739	406	454
6	3	1	53	49	51	66	56	63
7	13	21	93	86	105	225	336	460
31	5	10	129	60	60	298	186	252
701	501	625	1,456	1,086	1,478	12,553	8,399	8,993
121	74	35	943	570	491	1,703	928	862
1,469	1,117	1,277	9,678	6,507	6,811	30,842	20,032	21,400

13.

(Accumulated Number of Registrations by Foreign Nationals)



( : )

Classification	Japan	U.S.A	Germany	U.K	Switzer-land	France	Others	Total
Patents	76,383	35,787	8,025	2,570	2,569	3,895	9,643	138,872
Utility Models	9,806	1,029	171	47	22	56	1,255	12,386
Industrial Designs	11,999	5,287	818	396	584	882	3,297	23,263
Trademarks	45,232	61,248	15,370	10,737	8,873	12,543	28,696	182,699
	0	0	0	0	0	0	0	1
<b>Total</b>	<b>143,420</b>	<b>103,351</b>	<b>24,384</b>	<b>13,750</b>	<b>12,048</b>	<b>17,376</b>	<b>42,891</b>	<b>357,220</b>