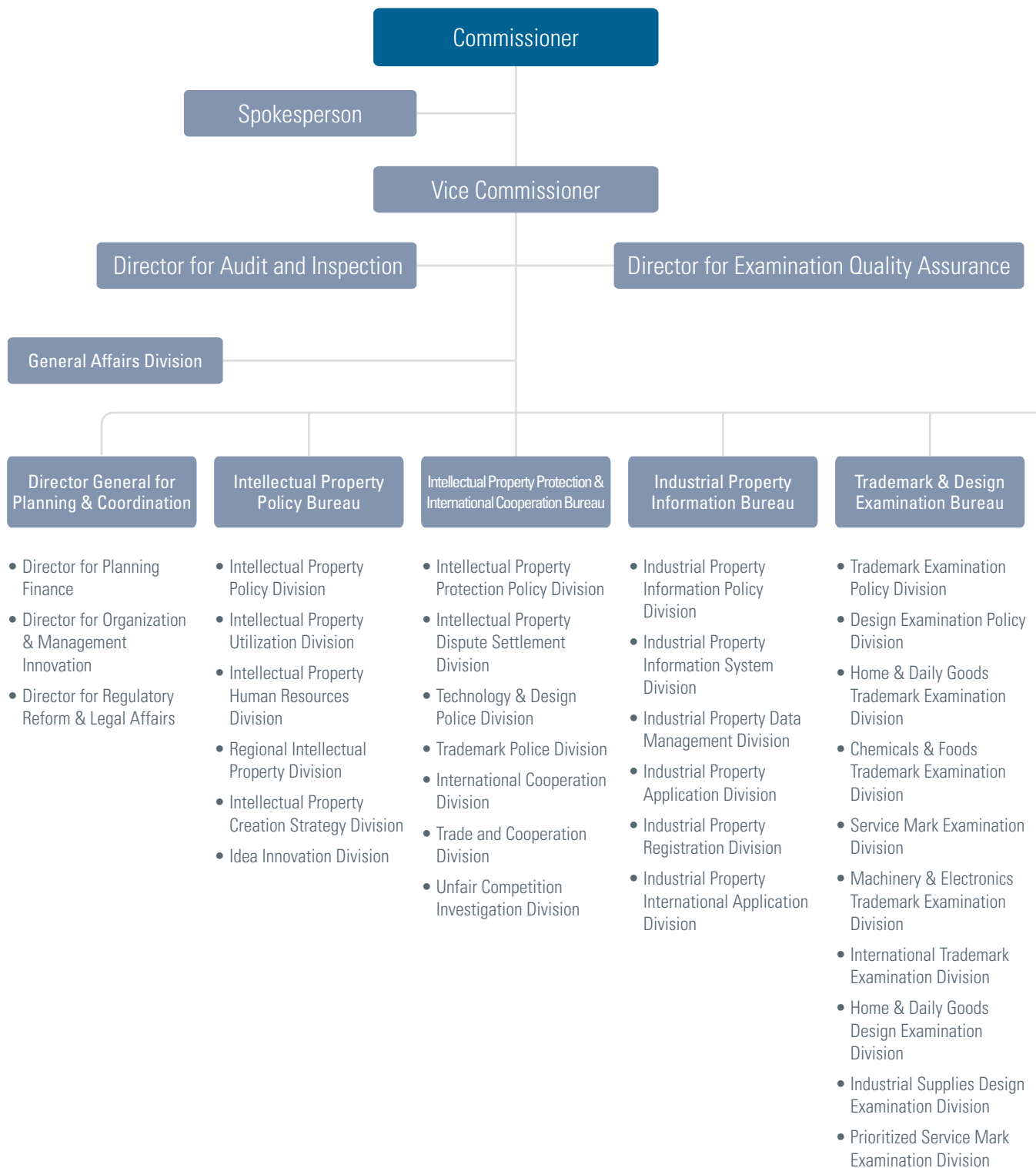


KIPO Organization Chart



- Artificial Intelligence & Big Data Examination Division
- Internet of Things Examination Division
- Biotechnology & Healthcare Examination Division
- Intelligent Robot Examination Division
- Autonomous Driving Technology Examination Division
- Smart Manufacturing Examination Division

Digital Convergence Examination Bureau

Intellectual Property Trial and Appeal Board

- Board 1-10
- Trial Policy Division / Litigation Division

International Intellectual Property Training Institute

- Education Planning Division
- IP Education Division
- International Education Division

Seoul Branch Office

- General Affairs Support Division
- Electronic Documentation Division

Patent Examination Policy Bureau

- Patent Examination Policy Division
- Patent Legal Administration Division
- Household Goods Examination Division
- Food & Biological Resources Examination Division
- Residential Technology Examination Division
- Home Applications Examination Division
- PCT International Search & Preliminary Examination Division I
- PCT International Search & Preliminary Examination Division II

Electricity & Communications Examination Bureau

- Electrical Systems Examination Division
- Computer Systems Examination Division
- Communications Systems Examination Division
- Electronic Commerce Examination Division
- Broadcasting & Multimedia Examination Division

Chemistry & Biotechnology Examination Bureau

- Organic Chemistry Examination Division
- Pharmaceuticals Examination Division
- Materials Chemistry Examination Division
- Advanced Energy Technology Examination Division
- Polymer & Textile Examination Division
- Medical Technology Examination Division
- Environmental Technology Examination Division

Machinery & Metals Examination Bureau

- General Machinery Examination Division
- Mechatronics Examination Division
- Construction Technology Examination Division
- Automobile Examination Division
- Mechanical Power Systems Examination Division
- Transportation Machinery Examination Division
- Measurement Technology Examination Division
- Materials & Metals Examination Division

Semiconductor Examination Bureau

- Semiconductor Fabrication Process Examination Division
- Semiconductor Design Examination Division
- Display Device Examination Division
- Semiconductor Materials Examination Division
- Semiconductor Package and Assembly Examination Division
- Semiconductor Fabrication Equipment Examination Division