

# Future Plan

59	KIPO Vision & Strategy
60	IP Support Systems & Programs
64	KIPO Organization Chart

---

# KIPO Vision & Strategy

To contribute to technological innovation and industrial development by promoting the creation and utilization of IP and strengthening its protection.

## Vision

To step forwards as a leading IP country through innovation of IP administration.

## Strategy

1

**Support creation of strong IP that leads industrial innovation**

2

**Establish an IP protection system responding to changes in the global environment**

3

**Support innovative growth through promotion of IP utilization**

4

**Build an IP foundation to lead the future**

---

## Performance Goals

1. Support consumer-oriented R&D innovation
2. Provide fair and accurate examination and trial services

1. Establish a system of domestic and overseas IP protection
2. Create a favorable international IP environment by strengthening international cooperation

1. Promote the commercialization and transaction of patent technology from universities, public research institutions and SMEs
2. Promote startup and commercialization based on IP

1. Foster a creative IP workforce
2. Innovate patent administration services to actualize a "Digital Platform Government"

# IP Support Systems & Programs 2024

Field	Project/Initiative Name	Beneficiaries	Support Details
Creation	"IP Didimdol"	Aspiring Entrepreneurs and Individuals	Support for actualizing and securing rights for excellent ideas discovered at Regional IP Centers, IP Startup Zones, and the Creative Economy Innovation Centers.
	"IP Narae"	Technology-based Startup Companies	Support for enhancing the IP management system of startup companies through IP technology and management strategy consulting
	IP-based Support for Overseas Expansion	SMEs (planning to export)	Comprehensive support of IP services, including support for acquiring IP rights abroad for promising SMEs with high export growth potential.
	IP-Linked R&D Strategy Support	SMEs and Midsized Companies with Research Organizations, Universities, and Public Institutions	Customized and dedicated support with IP-linked R&D strategies to assist companies, universities, and public institutions in securing core and original patents.
	Standard Essential Patents Creation Support	Universities, Public Institutions, SMEs, and Midsized Companies	Support for strategies to secure standard essential patents through the entire process of R&D and standardization
	Creation and Utilization of High-Quality Patents from Government R&D Support	Universities and Public Institutions	Support for strengthening the capabilities of creating and utilizing excellent patents through a IP management diagnosis of universities and public institutions.
	Public R&D Patent Technology Trend Analysis	Government R&D Departments and Specialized Agencies	Provision of patent trend analysis of the related-technology during planning and evaluation stages of public R&D research to prevent duplicate investment of R&D budget.
	IP Services Growth Support	IP Information Service Companies	Support for establishing market-tailored IP information service development strategies, implementing minimum viable pilot services, and improving functionality
	"Women Invention Everywhere"	Female Aspiring Entrepreneurs	Support for discovering marketable everyday inventions by creative women and supporting the process of application, design, prototype production, and commercialization of the product.
	IP Data Gift Policy	Aspiring Entrepreneurs and Small Enterprises within 7 years of startup	Free provision of IP data necessary for product development in the field of IP information services for up to 5 years
	"IP Direct SME Support"	SMEs	Consultation and discovery of urgent SME IP issues through regional IP centers throughout the country, and resolution of these difficulties through IP services support.
	Public-Private Partnership IP Strategy Support	Aspiring Entrepreneurs and Small Enterprises (within 7 years of startup)	Investment in startups and overseeing of corporate IP by private entities, and support for the commercialization of IP products through business packages by the government.
	IP Capability Strengthening for Small Businesses	Small Business Owners	Support for securing rights (i.e., trademarks and recipes) owned by small business owners, and operation of educational and counseling programs
	IP-C&D Strategy Support	SMEs	Support for SMEs includes developing innovative products using IP, commercialization consulting, and market strategy assistance.
IP Transaction Support	Individuals, SMEs, etc.	Brokerage services by patent transaction specialists for individuals and SMEs wishing to introduce patent technology, and support for enhancing the capabilities of private IP trading companies for independent operation	

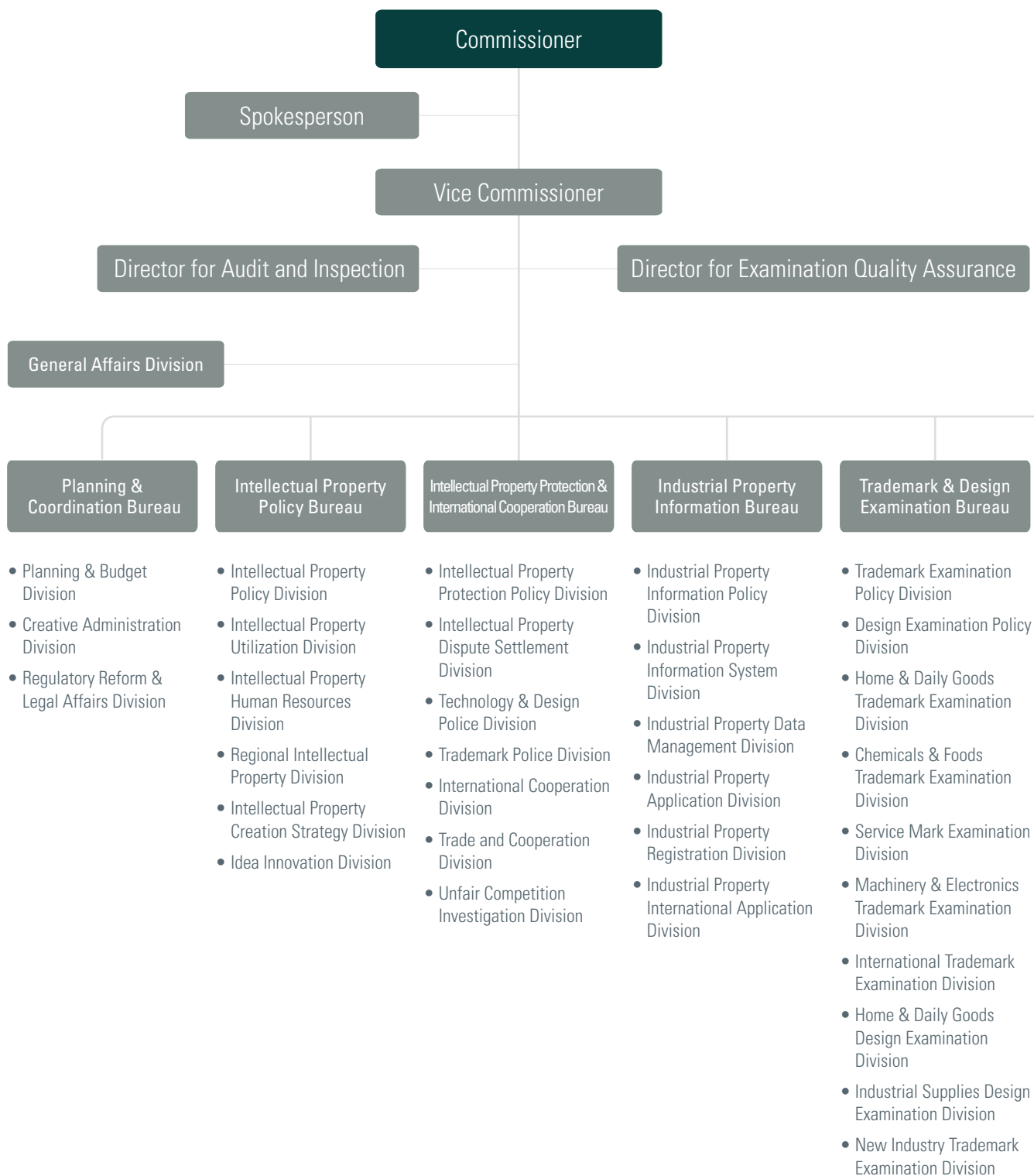
Field	Project/Initiative Name	Beneficiaries	Support Details
	Valuation Support for IP Commercialization	Individuals, SMEs, etc.	Support for the costs required for IP value assessment to utilize the IP owned by individuals and SMEs for business feasibility analysis and technology transactions
	Idea Transaction Support	Individuals, Companies, etc.	Operating an easy and safe idea trading platform that connects the demand and supply of ideas and allows various entities to participate
	Transaction and Commercialization Support of Carbon Neutrality Ideas	SMEs (in the field of carbon neutrality)	Identify and refine creative public ideas in the carbon neutrality field through idea platform 'Idearo', and support companies with carbon neutrality IP strategies and product development.
	Priority Purchase Recommendation System for High-quality Inventions	Individuals, SMEs	Support for entry into market through the KIPO Commissioner's recommendation of excellent invention products that apply patent technologies to national institutions, local governments, and public institutions.
	Public IP Commercialization Support	Universities and Public Institutions	Support for the entire lifecycle (from patent creation to technology transfer and commercialization) of patents owned by universities and public institutions.
	Reinvestment of IP Profits Support	Universities and Public Institutions	Creation of an independent environment for universities and public institutions to voluntarily reclaim a portion of technology transfer profits and reinvest in the commercialization of other promising patent technologies.
	Diagnosis Support for Public Institutions-owned Patents	Universities and Public Organizations	Consultation support for strategically managing and utilizing patents held by public institutions, and enhancing the utilization of government R&D patents.
<b>Protection</b>	Trade Secret Protection Centers	Universities, Public Organizations, SMEs	Provision of trade secret education, distribution of trade secret management systems, trade secret protection consulting, legal advice for dispute and leakage, digital forensics support, trade secret verification services, etc.
	Overseas IP Centers	SMEs/Midsized Companies (planning to export)	Support for securing local IP rights and resolving IP issues to enhance the export competitiveness of companies expanding overseas.
	Bad Faith Trademark Filings & Counterfeit Goods Response Support	SMEs/Midsized Companies	Support for monitoring bad faith trademark filings abroad and responding to the distribution of counterfeit products online overseas.
	Patent/K-Brand Dispute Response Strategies Support	SMEs/Midsized Companies (planning to export)	Provision of customized protection strategies for each stage of international IP disputes.
	Early Detection of Patent Dispute Risks Support	SMEs in the field of high-tech industry	Support for monitoring of patents with potential risks and disputes and providing patent dispute prevention training and practice.
	IP Right Dispute Mediation System	Right Holders, Licensees, Inventors, and Stakeholders	Inducing dispute resolution through agreement by a mediation panel composed of experts in the relevant field upon application for dispute mediation.
<b>Finance</b>	IP Mutual Aid	SMEs/Midsized Companies	Distribution and mitigation of the burden of costs related to IP among SMEs and midsized companies through a mutual aid system based on mutual assistance.

Future Plan

Field	Project/Initiative Name	Beneficiaries	Support Details
Education and Consultation	IP-backed Collateral/Loans Recovery Support	Banks with IP Collateral Loan Agreements	Mitigating the bank's losses by purchasing the bank's collateral IP upon corporate default
	IP Finance Valuation Support	SMEs	Support for the cost of valuation for IP finance including IP-guaranteed loans, IP-backed loans and IP investment.
	IP Digital Education	General Public	Provision of digital education online content related to IP knowledge and management.
	Specialized Universities for IP Professionals Cultivation	Universities Participating in the Ministry of Education's Regional Innovation Platform	Training of IP professionals to drive continuous growth of regional innovation companies and local dissemination of IP education in connection with the Ministry of Education's Regional Innovation Platform Project.
	Corporate IP Personnel Training	Early-stage Startups, Startup Stakeholders, etc.	Provision of customized practical training linked to the creation of corporate value to nurture IP-based personnel who can lead new industry trends.
	IP-Talented Entrepreneurs Cultivation	Middle School Students or Adolescents Aged 13-15	Selecting inventive youth to cultivate them as IP-based talented entrepreneurs.
	Invention Education Centers	Elementary, Middle, and High School Students	Expansion of the scope of invention education and early nurturing and discovery of creative invention talents.
	IP Meister Program	Vocational High School Students	Supporting vocational and Meister high school students to explore industrial site problems, propose, improve, and secure rights for ideas, and transfer technology.
	Employee Invention System Consultation	SMEs/Midsized Companies	Deployment of employee invention experts (i.e., patent attorneys) to companies to newly operate or those facing difficulties in operating an employee invention compensation system for supporting regulation establishment and resolution of operational difficulties.
	Patent Support Desks	SMEs	Provision of IP-related consultation services by patent attorneys and IP experts at regional IP centers, IP Startup Zones, and Creative Economy Innovation Centers.
	Public Patent Attorney Counseling Center	Small Businesses, Disabled Individuals, Basic Livelihood Security Recipients, and Other Socially Vulnerable Groups	Provision of free Public patent attorneys services, including patent-related consultation, document preparation, and direct representation in administrative proceedings or revocation lawsuits for socially disadvantaged people.
	Patent Information Search and Electronic Application Training	Patent Officers of Companies, Institutions, Research Institutes, Students, and Aspiring entrepreneurs	Provision of customized patent information search and electronic application training for different educational targets related to IP rights.
Events	Invention Day Event	General Public	Designation of May 19th as "Invention Day" to commemorate the invention of world's first rain gauge with a ceremony and awards for inventors.
	Korea Invention Patent Exhibition	General Public	Organization of events such as the Invention Patent Fair, Trademark Design Rights Fair, and Seoul International Invention Fair.
	International Women's Invention Expo	Women (holders of filed/registered IP rights)	Organization of an exposition that includes the operation of booths for domestic and international companies, provision of opportunities for distribution consultations with major domestic retailers, support for live commerce.
	IP Information Utilization Startup Contest	General Public	Hosting of a contest to discover creative ideas and entrepreneurship using IP information, excellent teams receive awards and free data and recommendations for startup support programs by the Ministry of SMEs and Startups.
	D2B Design Fair	General Public	Provision of a stage for the commercialization and filing of design rights for creative designs, thereby fostering prospective designers and supplying creative designs to domestic SMEs.

Field	Project/Initiative Name	Beneficiaries	Support Details
	"Campus Patent Universiade"	Domestic College (Graduate) Students	Expansion of patent data utilization and analysis education at universities to cultivate IP talents needed by companies and supply creative ideas from universities to the industrial field.
	Korea Student Invention Exhibition	Elementary, Middle, and High School Students	Nurturing of creative talented inventors by discovering and awarding students' invention ideas and exhibiting excellent student inventions
	Korea Student Creativity and Innovation Championship	Elementary, Middle, and High School Students	Organization of a competition where teams (each 5-7 members) of elementary, middle, and high school students creatively solve given tasks for fostering creativity, teamwork, and leadership.
	Patent Technology Award	General Public	Recognition of outstanding inventions registered at KIPO with awards to encourage the spirit of innovation.
	IP Startup Contest (IP League)	Aspiring Entrepreneurs, Entrepreneurs	Selection of (aspiring) entrepreneurs (teams) who possess or have applied for outstanding IP to provide awards and follow-up support for entrepreneurship and IP support projects
<b>Other Programs and Initiatives</b>	Excellent Employee Invention Compensation Certification System	SMEs/Mid-sized Companies (with a employee invention system and have implemented employee invention compensation within 2 years from the application date)	Provision of various incentives (i.e., bonus points) when participating in government support projects to certified companies.
	IP Management Certification	SMEs Practicing Exemplary IP Management	Provision of various incentives such as bonus points when participating in government support projects to certified companies.
	Fee Reduction Program	Individuals, SMEs, etc.	Reduction of fees for patent, utility model, and design applications, request for examinations; 70% reduction of the first 3 years of registration fees; and 50% reduction of registration fees from the 4th year to the end of the term.
	IP-Related Tax Support	SMEs, Mid-sized Companies, and Large Enterprises	<ol style="list-style-type: none"> <li>1. Exemption from income tax on employee invention compensation.</li> <li>2. Income tax/corporate tax reduction for income from technology transfer (licensing).</li> <li>3. Tax deduction for SMEs' patent investigation/analysis expenses.</li> </ol>
	Patent Trial - National Representative System	Small Businesses, Disabled Individuals, and Other Socially/Economically Disadvantaged Groups	Support for the appointment of national representatives for socially/economically disadvantaged parties in trial cases.
<b>Official Development Assistance</b>	Appropriate Technology and Brand Development Support	Cooperatives in Developing Countries, etc.	Utilization of patent information to provide technological solutions to appropriate to the local circumstance and development of brands and business strategies to increase income of communities in developing countries.
	IP Utilization by Government Ministries in ODA Projects	Cooperatives in Developing Countries, etc.	Support for customized patent consulting during joint research periods with developing countries through collaboration with other ministries (Ministry of Science and ICT, Rural Development Administration) using patent R&D analysis, supporting the development of appropriate technologies and brands for seeds targeted for technology development by the Rural Development Administration, thereby achieving sustainable economic growth in developing countries.
	Fund-In-Trust KIPO (WIPO)	Patent-related Personnel in Developing Countries, Youth, Women, SMEs	Organization of IP-related capacity building and awareness enhancement projects for developing countries and least developed countries through contributions to the Fund-In-Trust KIPO.

# KIPO Organization Chart



- Artificial Intelligence & Big Data Examination Division
- Internet of Things Examination Division
- Biotechnology & Healthcare Examination Division
- Intelligent Robot Examination Division
- Autonomous Driving Technology Examination Division
- Smart Manufacturing Examination Division

**Digital Convergence Examination Bureau**

**Intellectual Property Trial and Appeal Board**

- Board 1-10
- Trial Policy Division / Litigation Division

**International Intellectual Property Training Institute**

- Education Planning Division
- IP Education Division
- International Education Division

**Seoul Branch Office**

- General Affairs Support Division
- Electronic Documentation Division

**Patent Examination Policy Bureau**

- Patent Examination Policy Division
- Patent Legal Administration Division
- Household Goods Examination Division
- Food & Biological Resources Examination Division
- Residential Technology Examination Division
- Home Applications Examination Division
- PCT International Search & Preliminary Examination Division I
- PCT International Search & Preliminary Examination Division II

**Electricity & Communications Examination Bureau**

- Electrical Systems Examination Division
- Computer Systems Examination Division
- Communications Systems Examination Division
- Electronic Commerce Examination Division
- Broadcasting & Multimedia Examination Division

**Chemistry & Biotechnology Examination Bureau**

- Organic Chemistry Examination Division
- Pharmaceuticals Examination Division
- Materials Chemistry Examination Division
- Advanced Energy Technology Examination Division
- Polymer & Textile Examination Division
- Medical Technology Examination Division
- Environmental Technology Examination Division

**Machinery & Metals Examination Bureau**

- General Machinery Examination Division
- Mechatronics Examination Division
- Construction Technology Examination Division
- Automobile Examination Division
- Mechanical Power Systems Examination Division
- Transportation Machinery Examination Division
- Measurement Technology Examination Division
- Materials & Metals Examination Division

**Semiconductor Examination Bureau**

- Semiconductor Fabrication Process Examination Division
- Semiconductor Design Examination Division
- Display Device Examination Division
- Semiconductor Materials Examination Division
- Semiconductor Package and Assembly Examination Division
- Semiconductor Fabrication Equipment Examination Division