

Future Plan

- 61 KIPO Vision & Strategy
- 62 IP Support Systems & Programs
- 68 KIPO Organization Chart

KIPO Vision & Strategy

To contribute to technological innovation and industrial development by promoting the creation and utilization of IP and strengthening its protection.

Vision

To step forward as a leading IP country through innovation of IP administration.

Strategy



Performance Goals

- | | | | |
|--|---|--|--|
| <ol style="list-style-type: none"> 1. Support consumer-oriented R&D innovation 2. Provide fair and accurate examination and trial services | <ol style="list-style-type: none"> 1. Establish a system of domestic and overseas IP protection 2. Create a favorable international IP environment by strengthening international cooperation | <ol style="list-style-type: none"> 1. Promote the commercialization and transaction of patent technology from universities, public research institutions and SMEs 2. Promote startup and commercialization based on IP | <ol style="list-style-type: none"> 1. Foster a creative IP workforce 2. Innovate patent administration services to actualize a “Digital Platform Government” |
|--|---|--|--|

IP Support Systems & Programs 2025

Field	Project/Initiative Name	Beneficiaries	Details
Creation and Use	IP Didimdol	Aspiring Entrepreneurs and Individuals	Support for concretization and IP rights acquisition of outstanding ideas discovered through RIPC, IP Startup Zones, and Creative Economy and Innovation Centers.
	IP Narae	Technology-based Startup Companies	Consulting service support on IP technology and management strategies to enhance IP management systems of startup companies.
	Global IP Star Company Development	SMEs	Comprehensive IP service support, including overseas IP rights acquisition, to help exporting and export-preparing SMEs grow into globally competitive enterprises.
	IP-Linked R&D Strategy Support	SMEs/Mid-sized Companies with Research Organizations, Universities, and Public Institutions	Tailored and engaged support for IP-linked R&D strategies to help companies, universities, and public research institutes secure core and foundational patents.
	Standard Essential Patents Creation Support	Universities, Public Institutions, SMEs, and Midsized Companies	Support for standard essential patent (SEP) strategies across the entire development process to enhance research productivity and improve the technology trade balance.
	Creation and Utilization of High-Quality Patents from Government R&D Support	Universities and Public Institutions	Capacity building support for high-quality patent generation and utilization through IP management diagnostics of universities and public institutions.
	In-depth Analysis of National R&D Patent Trends	R&D Ministries and Specialized Institutions	Provision of Patent-based strategic input during national R&D pre-planning to prevent redundant research in key development fields and enhance quality of the planning process.
	IP Services Growth Support	IP Information Service Companies	Support for establishing development strategies for market-oriented IP information services to implement minimum viable pilot services and improving functionality.
	Women Invention Everywhere	Female Aspiring Entrepreneurs	Discovery of marketable practical everyday inventions by creative women and support for the process of filing, design, prototype production, and commercialization of the product.
	IP Data Gift Policy	Aspiring Entrepreneurs and Small Enterprises within 7 years of startup	Provision of free IP data, categorized by the startup or growth stage, necessary for product development in the IP information service sector for up to 7 years.
	IP Emergency Support	SMEs	Resolution of urgent IP challenges faced by SMEs in management to remove growth barriers in business operations.
	Public-Private Partnership IP Strategy Support	Aspiring Entrepreneurs and Small Enterprises (within 7 years of Startup)	Private sector management of IP and investment in startups, and government support through an IP commercialization package (rights acquisition, commercialization, production, and certification etc.).
IP Capability Strengthening for Small Businesses	Small Business Owners	Support for small business owners in acquiring rights (e.g., trademarks and recipes) and operation of education and consultation programs to raise IP awareness	

Field	Project/Initiative Name	Beneficiaries	Details
	Designation of Institutions for IP Diagnosis	Institutions for Examination of IP Rights	Designation of IP diagnosis institutions to provide R&D direction and strategy to companies and research institutions through comprehensive investigation and analysis of industrial property and related information.
	Patent-Ro Product Innovation Support	SMEs	Strategic support for SMEs to utilize IP for innovative product development and enhancement, business consulting, and market entry assistance.
	Domestic IP Transactions Support	Individuals, SMEs, etc.	Brokerage service support by IP transaction specialists for individuals and SMEs seeking to trade IP such as patent technologies.
	International IP Transactions Support.	SMEs/Mid-sized Companies (in advanced industries)	Support for overseas IP transaction brokerage to help SMEs and mid-sized companies in advanced industries manufacture and sell export products as well as promote competitiveness of core technologies and domestic production.
	Valuation Support for IP Commercialization	Individuals, SMEs, etc.	Financial assistance for the cost IP value assessment of IP owned by individuals and SMEs to help them utilize IP for business feasibility analysis and technology transactions.
	Idea Transaction Support	Individuals, Companies, etc.	Operation of a secure and user-friendly idea trading platform that connects supply and demand of ideas and allows participation by diverse entities.
	Idea Transaction and Commercialization Support in the Carbon Neutrality Field	SMEs in the field of carbon neutrality	Discovery and enhancement of ideas from the general public in the carbon neutrality sector, and provision of IP strategies and product commercialization consulting to SMEs.
	Support for the growth of climate tech through the utilization of public patent technologies	SMEs (Climate tech sector)	Identification and transfer of patented technologies from the public sector to the private sector for carbon-reducing product development and process improvement, along with verification and commercialization support.
	Priority Purchase Recommendation System for High-quality Inventions	Individuals, SMEs	Market entry support for outstanding inventions with patented technology to be recommended for priority purchase by KIPO Commissioner to national institutions, local governments, and public institutions.
	Public IP Commercialization Support	Universities and Public Research Institutions	Full-cycle support for universities and public research institutes to utilize their patent holdings, from creation and technology transfer to commercialization and the establishment of a self-sustaining environment.
	Diagnosis Support for Public Institutions-owned Patents	Universities and Public Institutions	Consulting services to enhance the usability of government R&D patent outcomes through diagnosis and strategic management of patents held by public institutions

Field	Project/Initiative Name	Beneficiaries	Details
Protection	Trade Secret Protection Centers	Universities & Public Research Institutes, SMEs	Trade secret protection services, such as online and tailored training, distribution of management systems, consulting, legal advisory for leakage disputes, and original authentication services
	Overseas IP Centers	SMEs/Mid-sized Companies (planning to export)	Support for acquiring domestic IP rights and resolving IP issues to enhance export the competitiveness of companies expanding overseas.
	Online Counterfeit Goods Overseas	SMEs/Mid-sized Companies	Monitoring of trademark squatting abroad and support for responding to overseas online counterfeit product distribution.
	Patent/K-Brand Dispute Response Strategies Support	SMEs/Mid-sized Companies (planning to export)	Provision of tailored protection strategies for each stage of international IP disputes, including risk analysis, response to cease-and-desist letters and lawsuits, license renewal, and enforcement.
	Enhancement of IP Risk Response Capabilities of Export-Venturing Companies	SMEs/Mid-sized companies with no export or beginner exporters (less than \$100,000 in exports)	Diagnosis and response support for overseas IP dispute risks faced by export-venturing companies entering foreign markets.
	IP Dispute Resolution System	Rights Holders, Licensees, Employee Inventors, and Stakeholders	Provision of dispute mediation, when requested, by a panel of experts in the relevant field aimed at facilitating mutual agreement for dispute resolution.
Finance	IP Mutual Aid	SMEs/Midsized Companies	Operation of a mutual aid system based on inter-company assistance to reduce IP-related costs and enhance business stability for SMEs and mid-sized enterprises.
	IP-backed Collateral/Loans Recovery Support	Banks with IP Collateral Loan Agreements	Mitigation of losses for banks by purchasing collateralized IP in case of loan default following IP-backed lending.
	IP Finance Valuation Support	SMEs	Support for IP valuation costs to help companies secure financing—IP-guaranteed loans, IP-backed loans and IP investment—based on the value of their IP assets.
	Direct IP Investment, IP Company investment etc.	SMEs and venture companies	Direct investment in IP (e.g., patents) or investment in innovation-based companies with patent technologies to promote the innovative growth of SMEs and venture companies (through operation of IP funds under the Korea Venture Investment Corp).
Education and Consultation	IP Digital Education	General Public	Provision of online digital educational content on IP fundamentals and management, including patents, trademarks, and designs.
	Specialized Colleges for IP Professionals Cultivation	University (Graduate) Students	Cultivation of region-specific IP professionals and promotion of IP education to drive the sustainable growth of local innovation-driven companies.
	IP-Talented Entrepreneurs Cultivation	Middle School Students or Adolescents Aged 13-15	Selection and development of gifted student inventors with high creativity into future IP-based entrepreneurs leading next-generation industries

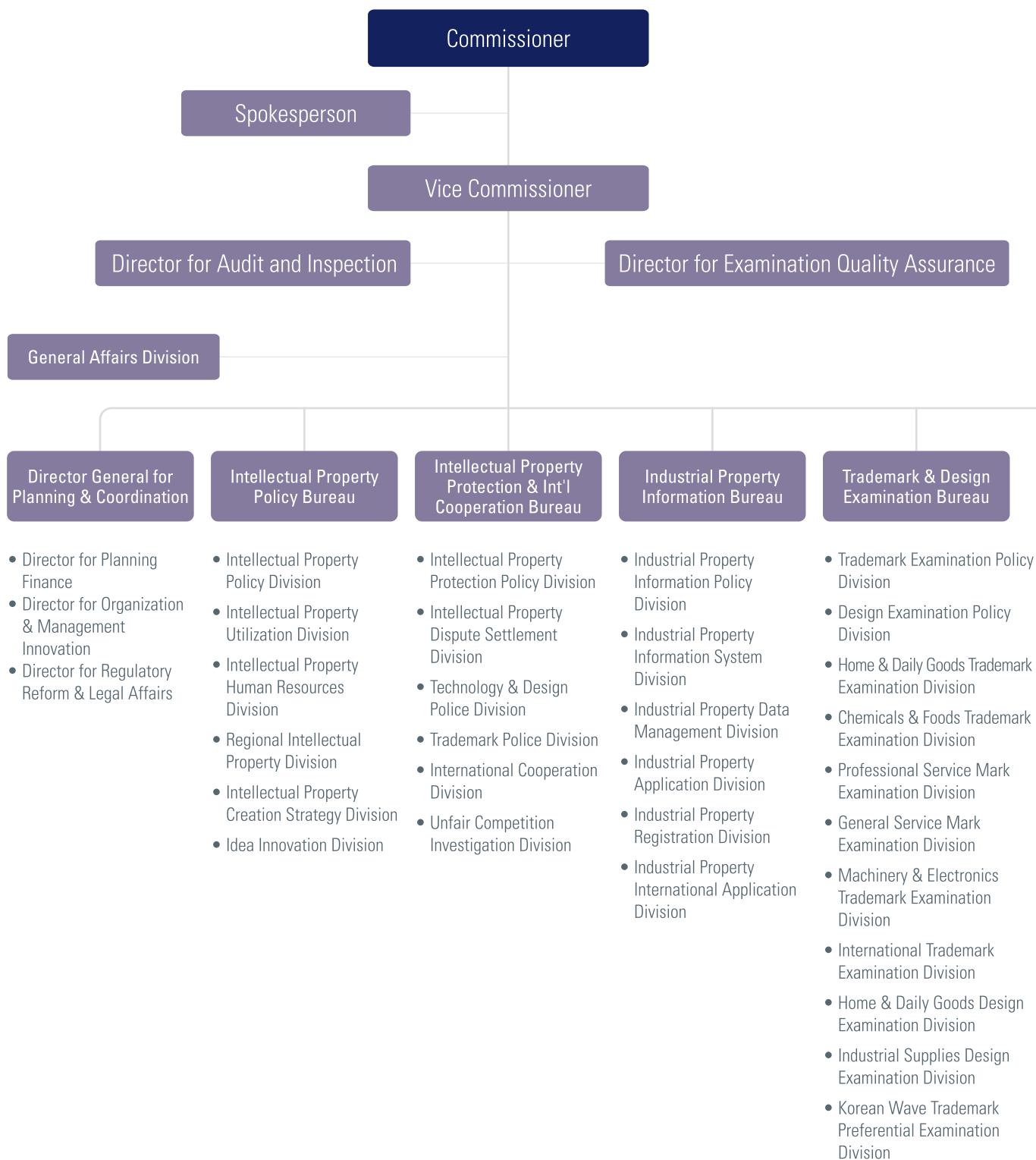
Field	Project/Initiative Name	Beneficiaries	Details
	Invention Education Centers	Elementary, Middle, and High School Students	Expansion of invention education and early cultivation of creative talent through invention education centers.
	IP Meister Program	Vocational High School Students	Support for vocational and Meister high school students in exploring industry field challenges and developing, refining, protecting, and transferring their ideas to become future technical experts
	Support for Invention Education at Full-day Elementary School	Elementary School Students, Invention Education Instructors	Delivery of high-quality invention education to develop the skills required for the future society through "Neulbom Schools," addressing low birth rates and reducing private education burdens.
	Employee Invention System Consultation	SMEs/Midsized Companies	Dispatch of IP experts (e.g., PhD-level consultants) to companies that are trying to implement or are facing difficulties in operating job invention regulations, to assist in establishing the regulations and resolving operational challenges.
	Patent Support Desks	SMEs, Aspiring Entrepreneurs, etc.	Provision of IP consultation services through IP specialists at regional IP Centers.
	Public Patent Attorney Counseling Center	Small Businesses, Disabled Individuals, Basic Livelihood Security Recipients, and Other Socially Vulnerable Groups	Free patent attorney services for socially disadvantaged individuals, including consultations, document preparation for industrial property rights, and legal representation in trials and appeals.
	Patent Information Search and Electronic Application Training	Patent Officers of Companies, Institutions, Research Institutes, Students, and Aspiring entrepreneurs	Customized education on patent information search and electronic filing tailored to different target groups.
	CEO IP Academy for Businesses	Venture and INNOBIZ Entrepreneurs	Providing IP education for venture and INNOBIZ entrepreneurs to strengthen IP capabilities and enhance technological competitiveness.
Events	Invention Day Event	General Public	Designation of May 19 as "Invention Day," commemorating the invention and official use of the world's first rain gauge, with an annual ceremony and awards for outstanding inventors
	Korea Invention Patent Exhibition	General Public	Organization of the Korea Invention Patent Exhibition, the Korea Trademark and Design Rights Exhibition, and the Seoul International Invention Fair.
	International Women's Invention Expo	Women Holders of filed/registered IP Rights	Exposition with booth operation opportunities for domestic and international participants, distribution consulting with major domestic retailers, and live commerce support
	Intellectual Property Data Utilization Startup Competition	General Public	Competition to discover creative ideas using IP information and support startups and commercialization, where outstanding teams are selected for awards, receive free data, and are recommended for startup support programs by the Ministry of Science and ICT.

Future Plan

Field	Project/Initiative Name	Beneficiaries	Details
	D2B Design Fair	General Public	Provision of a platform for commercialization of original designs and acquisition of strong design rights, thereby fostering prospective designers and supplying creative designs to domestic SMEs.
	Campus Patent Universiade	Domestic College (Graduate) Students	Expansion of patent data utilization and analysis education in universities to cultivate IP talent needed by industry and to connect creative university ideas with the private sector.
	Korea Student Invention Exhibition	Elementary, Middle, and High School Students	Nurturing of creative talented inventors by discovering and awarding students' invention ideas and exhibiting excellent student inventions
	Korea Student Creativity and Innovation Championship	Elementary, Middle, and High School Students	Organization of a competition of team-based invention activities for elementary, middle, and high school students (5–7 members per team) creatively solve given tasks for fostering creativity, teamwork, and leadership.
	Patent Technology Award	General Public	Recognition of outstanding inventions registered at KIPO with awards to encourage the spirit of innovation.
	IP Startup Contest (IP League)	Aspiring Entrepreneurs, Entrepreneurs	Operation the government-wide startup competition "Challenge! K-Startup," selecting (pre-) entrepreneurs with strong IP portfolios and offering follow-up support through awards (e.g., monetary prize, Presidential Award, etc.) and IP/startup support programs by KIPO and the Ministry of SMEs and Startups
Other Programs and Initiatives	Excellent Employee Invention Compensation Certification System	SMEs/Midsized Companies (with an employee invention system and have implemented employee invention compensation within 2 years from the application date)	Provision of various incentives for certified companies, including expedited examination of patents, utility models, and designs; additional discount on registration fees; SGI Seoul Guarantee benefits; and extra points when applying for government support programs.
	Intellectual Property Management Expansion	SMEs that exemplarily practice IP management	Provision of additional incentives to certified companies, including additional points for participation in government support programs.
	Fee Reduction Program	Individuals, SMEs, etc.	Reduction of fees for patent, utility model, and design applications, request for examinations; 70% reduction of the first 3 years of registration fees; and 50% reduction of registration fees from the 4th year to expiration.
	IP-Related Tax Support	SMEs, Midsized Companies, and Large Enterprises	Tax benefits including 1) exemption from income tax on employee invention compensation, 2) income tax/corporate tax reduction for income from technology transfer (licensing), 3) tax credits on patent search and analysis costs for SMEs.

Field	Project/Initiative Name	Beneficiaries	Details
	Patent Trial - National Representative System	Small Businesses, Disabled Individuals, and Other Socially/Economically Disadvantaged Groups	Provision of court-appointed representatives for parties without legal counsel in IP trial cases who are socially or economically disadvantaged.
Official Development Assistance	Appropriate Technology and Brand Development Support	Cooperatives in developing countries, etc.	Utilization of patent information to provide appropriate technological solutions to the local circumstance and development of brands and business strategies to increase income of communities in developing countries.
	IP Utilization by Government Ministries in Official Development Assistance Projects	Cooperatives in Developing Countries, etc.	Support for sustainable economic development in developing countries through customized patent consulting during joint research periods through collaboration with other ministries (e.g., Ministry of Science and ICT, Rural Development Administration) using patent R&D analysis, including appropriate technology and brand development for seeds targeted for technology development.
	Fund-In-Trust KIPO (WIPO)	Patent-related Personnel in Developing Countries, Youth, Women, SMEs	Capacity building and awareness-raising in IP for developing and least developed countries through contributions to the WIPO Korea Funds-in-Trust.

KIPO Organization Chart



- Artificial Intelligence & Big Data Examination Division
- Internet of Things Examination Division
- Bioscience Technology Examination Division
- Intelligent Robot Examination Division
- Autonomous Driving Technology Examination Division
- Smart Manufacturing Examination Division
- Biological Diagnostics & Analysis Examination Division
- Biopharmaceuticals Examination Division
- Healthcare Technology Examination Division
- Healthcare Data Examination Division

Intellectual Property Trial and Appeal Board

- Board 1-10
- Trial Policy Division / Litigation Division

International Intellectual Property Training Institute

- Education Planning Division
- IP Education Division
- International Education Division

Seoul Branch Office

- General Affairs Support Division
- Electronic Documentation Division

Digital Convergence Examination Bureau

Patent Examination Policy Bureau

- Patent Examination Policy Division
- Patent Legal Administration Division
- Household Goods Examination Division
- Food & Biological Resources Examination Division
- Residential Technology Examination Division
- Home Applications Examination Division
- PCT International Search & Preliminary Examination Division

Electricity & Communications Examination Bureau

- Electrical Systems Examination Division
- Computer Systems Examination Division
- Communications Systems Examination Division
- Electronic Commerce Examination Division
- Broadcasting & Multimedia Examination Division

Chemistry & Biotechnology Examination Bureau

- Organic Chemistry Examination Division
- Pharmaceuticals Examination Division
- Materials Chemistry Examination Division
- Battery Materials Examination Division
- Polymer & Textile Examination Division
- Medical Technology Examination Division
- Environmental Technology Examination Division
- Battery Design Examination Division
- Battery Control & Management Examination Division

Machinery & Metals Examination Bureau

- General Machinery Examination Division
- Mechatronics Examination Division
- Construction Technology Examination Division
- Automobile Examination Division
- Mechanical Power Systems Examination Division
- Transportation Machinery Examination Division
- Measurement Technology Examination Division
- Materials & Metals Examination Division

Semiconductor Examination Bureau

- Semiconductor Fabrication Process Examination Division
- Semiconductor Design Examination Division
- Display Device Examination Division
- Semiconductor Materials Examination Division
- Semiconductor Package and Assembly Examination Division
- Semiconductor Fabrication Equipment Examination Division