

Functions of the Korean Intellectual Property Office

189, Cheongsu-ro, Seo-gu, Daejeon, 35208, Korea

Tel: (+82)42-481-5008, Internet address: <http://www.kipo.go.kr>

FUNCTIONS

The Korean Intellectual Property Office (KIPO) is responsible for affairs regarding patents, utility models, industrial designs, and trademarks, and for the related examinations and trials. The main functions of KIPO are as follows: the examination and registration of intellectual property rights (for patents, utility models, trademarks, and industrial designs); the conducting of trials on intellectual property disputes; the management and dissemination of information on intellectual property rights; the promotion and public awareness of invention activities; the promotion of international cooperation on intellectual property rights; and the training of experts on intellectual property rights.

Intellectual Property Policy Bureau

- Establishes policies that promote the creation and utilization of intellectual property
- Formulates a master plan on the creation and utilization of intellectual property
- Promotes intellectual property activities in local areas, universities and public research institutes
- Supports the cultivation of human resources in the field of intellectual property
- Promotes intellectual property research & development

Intellectual Property Protection and International Cooperation Bureau

- Establishes policies that promote the protection of intellectual property and corporate trade secrets
- Develops and manages dispute mediation system of intellectual property
- Operates a series of IP-desk to help Korean companies in foreign markets
- Runs the special police squad to crack down on counterfeit goods
- Strengthens bilateral cooperation with international IP offices
- Constructs cooperative channels with foreign IP organizations

Information and Customer Service Bureau

- Plans comprehensive automation of intellectual property administration
- Develops, manages, and maintains the automation systems
- Builds and manages intellectual property information and documentation
- Manages civil complaints about intellectual property and enhances customer services
- Conducts formality examination of intellectual property applications and offers registration services for intellectual property applications

Trademark & Design Examination Bureau

- Executes and researches laws related to trademarks and industrial designs along with various ordinances and examination guidelines
- Classifies goods and services, and examines trademarks and industrial design applications, and researches their trends

Patent Examination Policy Bureau

- Sets up examination plans and coordinates examination plans for patent and utility model applications
- Conducts affairs related to the execution of patent and utility model laws and procedures
- Formulates and coordinates examination criteria and publishes examination manuals
- Classifies and examines patent and utility model applications and oversees studies on technological trends
- Examines patent and utility model applications related to energy technology, automobile convergence technology, information technology convergence technology, measurement & analysis technology, medical technology, PCT international search & preliminary examination fields
- Surveys technological trends in related fields

Patent Examination Bureau I

- Examines patent and utility model applications related to home appliance, office equipment, living appliance, civil engineering and environment, residential technology, electric power technology, fine chemistry, food, agriculture, forestry and fisheries, electronic components fields
- Surveys technological trends in related fields

Patent Examination Bureau II

- Examines patent and utility model applications related to processing system, precision component, semiconductor, automobile, polymer and textile, computer system, pharmaceuticals, telecommunication network, resources recovery & reutilization fields
- Surveys technological trends in related fields

Patent Examination Bureau III

- Examines patent and utility model applications related to applied materials, robot and automation, advanced transportation, biotechnology, mobile communication, metals, display device, multimedia broadcasting fields
- Surveys technological trends in related fields

Intellectual Property Trial and Appeal Board

- Conducts trials regarding the decisions to grant or invalidate patents, utility models, trademarks and industrial designs

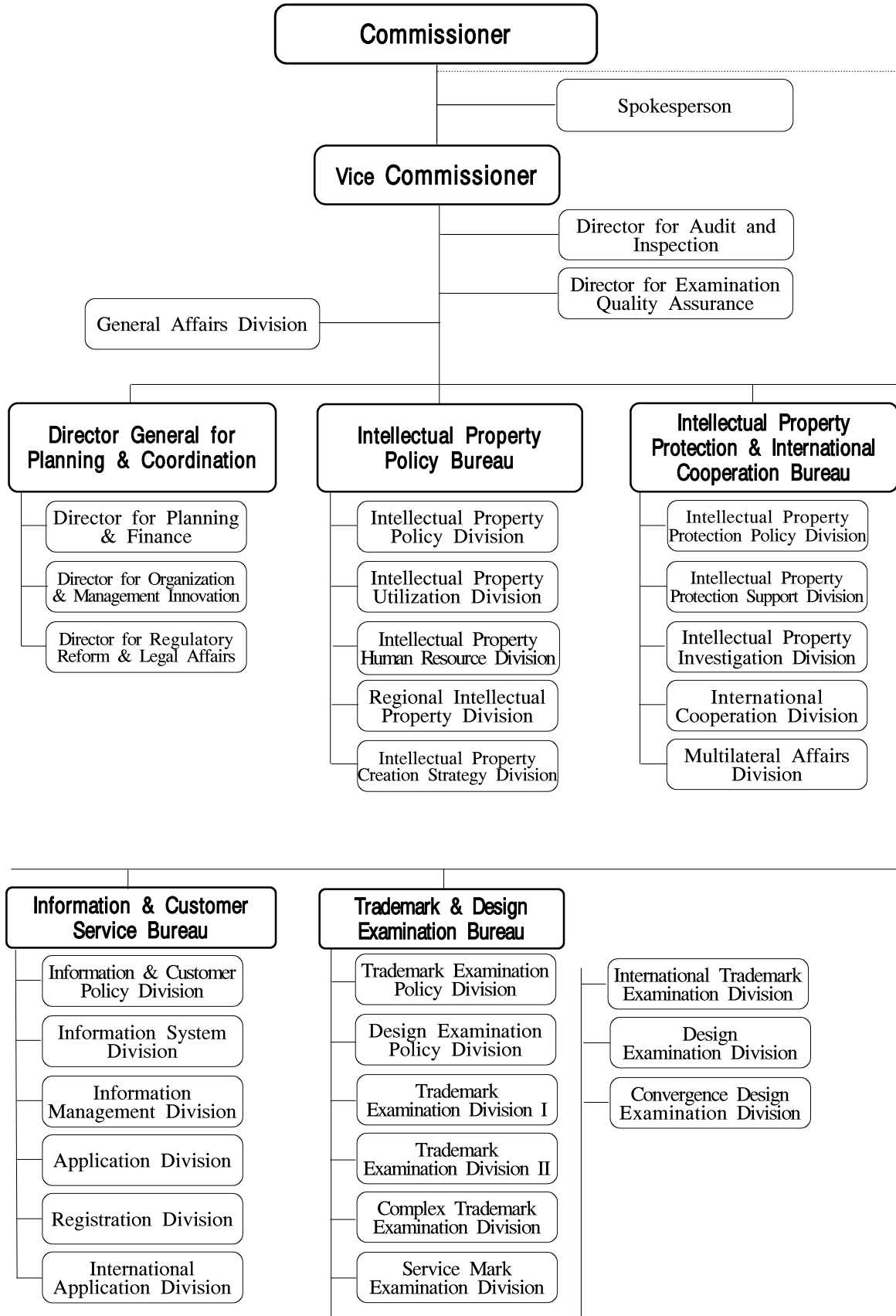
International Intellectual Property Training Institute

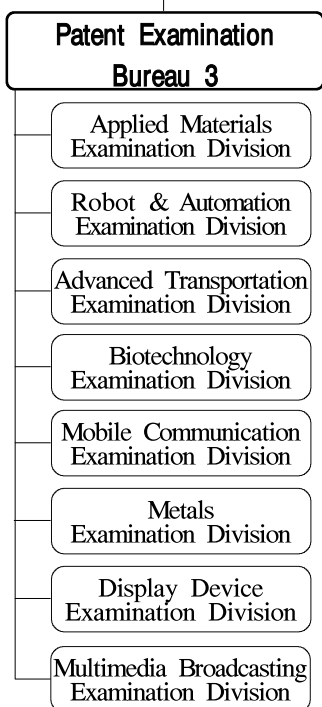
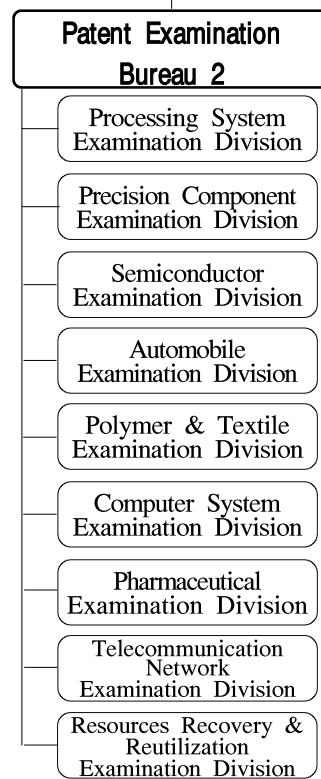
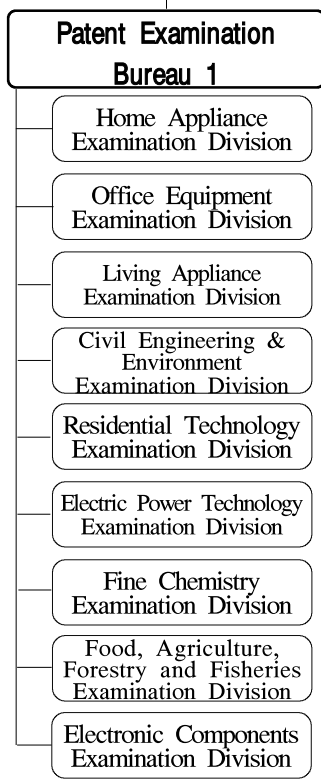
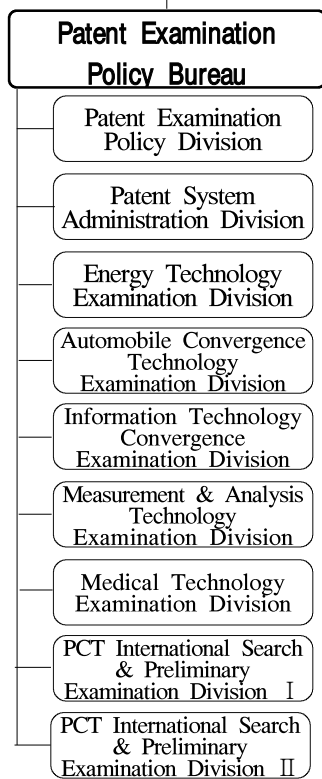
- Provides professional education on intellectual property theory and practice to public officials and fosters the development of human resources in the public sector
- Executes and manages educational programs on intellectual property for private groups such as patent attorneys, private companies, and research institutes; also provides invention education for teachers and students

Seoul Branch Office

- Manages applications and registrations for intellectual property rights
- Disseminates and manages information on intellectual property rights

ORGANIZATIONAL CHART





Intellectual Property Trial and Appeal Board

International Intellectual Property Training Institute

Seoul Branch Office