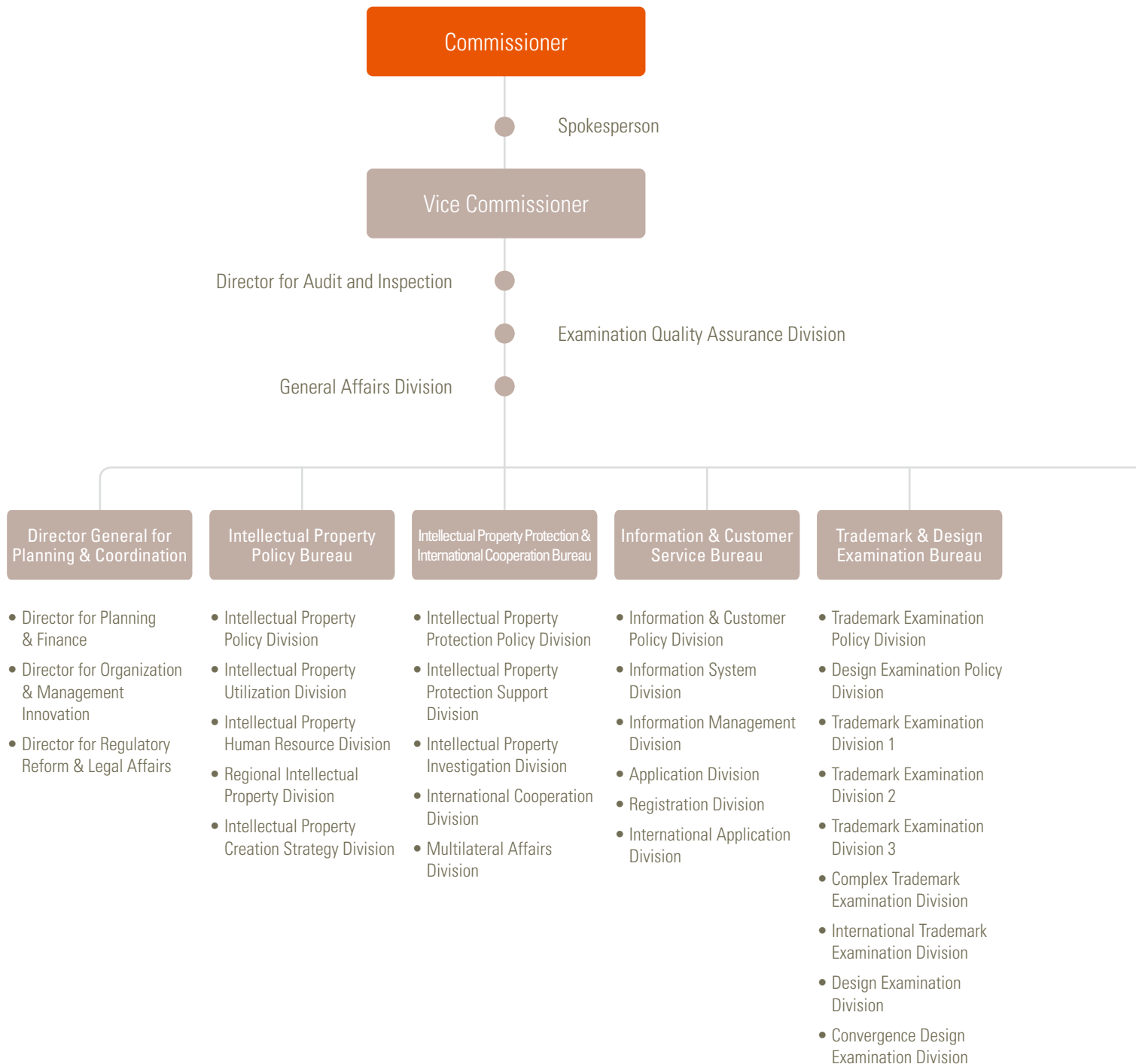


Organizational Chart of KIPO



Intellectual Property Trial and Appeal Board

- Board 1-11
- Trial Policy Division
- Litigation Division

International Intellectual Property Training Institute

- Education Planning Division
- IP Education Division
- International Education Division

Seoul Branch Office

- Administrative Division
- Application and Registration Division
- Electronic Documentation Division

Patent Examination Policy Bureau

- Patent Examination Policy Division
- Patent System Administration Division
- Energy Technology Examination Division
- Automobile Convergence Technology Examination Division
- Information Technology Convergence Examination Division
- Measurement & Analysis Technology Examination Division
- Medical Technology Examination Division
- PCT International Search & Preliminary Examination Division
- PCT International Search & Preliminary Examination Division

Patent Examination Bureau 1

- Home Appliance Examination Division
- Office Equipment Examination Division
- Living Appliance Examination Division
- Civil Engineering & Environment Examination Division
- Residential Technology Examination Division
- Electric Power Technology Examination Division
- Fine Chemistry Examination Division
- Food, Agriculture, Forestry and Fisheries Examination Division
- Electronic Components Examination Division

Patent Examination Bureau 2

- Processing System Examination Division
- Precision Component Examination Division
- Semiconductor Examination Division
- Automobile Examination Division
- Polymer & Textile Examination Division
- Computer System Examination Division
- Pharmaceutical Examination Division
- Telecommunication Network Examination Division
- Resources Recovery & Reutilization Examination Division

Patent Examination Bureau 3

- Applied Materials Examination Division
- Robot & Automation Examination Division
- Advanced Transportation Examination Division
- Biotechnology Examination Division
- Mobile Communication Examination Division
- Metals Examination Division
- Display Device Examination Division
- Multimedia Broadcasting Examination Division